



Finsen Road | London | SE5

Freehold

£600,000

- Immaculate condition
- Ruskin Park
- Excellent transport links
- Open plan kitchen dinner
- Long lease
- Herne Hill Camberwell borders
- 2 bedroom
- 2 bathrooms
- Split level
- Victorian

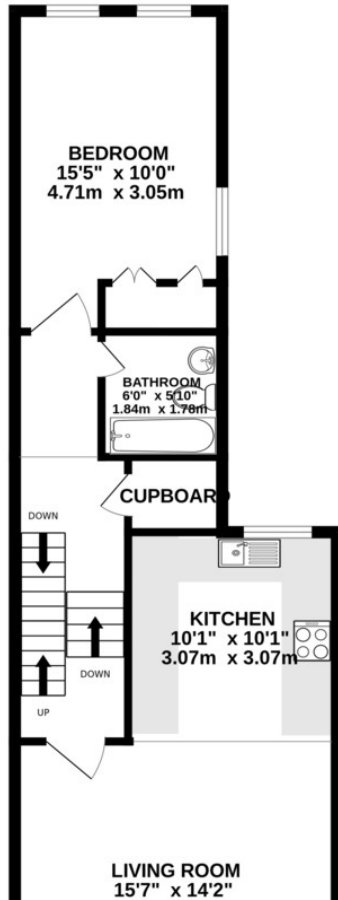


An immaculate two bedroom apartment in the very popular Ruskin park area on the borders of Herne Hill and Camberwell. This split level two bed, two bathroom flat has a spacious and bright open plan kitchen, dinner reception area. Located a stones throw from Ruskin park with excellent transport links including Loughborough junction, Denmark Hill Station and Brixton tube a short walk away.

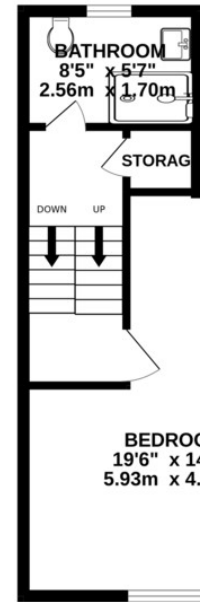


Score	Energy rating	Current	Potential
92+	A		
81-91	B		
69-80	C	74 C	77 C
55-68	D		
39-54	E		
21-38	F		
1-20	G		

1ST FLOOR
628 sq.ft. (58.4 sq.m.) approx.



2ND FLOOR
357 sq.ft. (33.2 sq.m.)



TOTAL FLOOR AREA : 1141sq.ft. (106.0 sq.m.)

Whilst every attempt has been made to ensure the accuracy of the floorplan of doors, windows, rooms and any other items are approximate and no responsibility is accepted for any omission or mis-statement. This plan is for illustrative purposes only and is not to be used as a basis for any prospective purchaser. The services, systems and appliances shown have no warranty as to their operability or efficiency can be given.

Maria with Matrino 20/07/24

Viewing Arrangements

Strictly by appointment

Contact Details

121 Denmark Hill

London

SE5 8EN

www.urbanvillagehomes.co.uk

sales@urbanvillagehomes.com

020 3519 9121

Agents Note: Whilst every care has been taken to prepare these sales particulars, they are for guidance purposes only. All measurements are approximate and for general guidance purposes only and whilst every care has been taken to ensure their accuracy, they should not be relied upon and potential buyers are advised to recheck the measurements