



27 Ufford Street | London | SE1 8QD

Freehold

£935,000

- Two double bedrooms
- Private garden
- Renovation potential
- Freehold
- Conservation
- Excellent location
- Waterloo
- Local amenities
- Southbank
- Excellent transport links



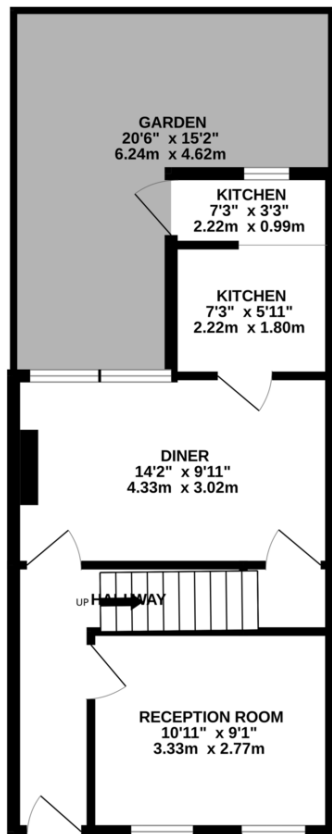


This is a rare end of terrace property on Ufford Street. A two bedroom freehold house with a private garden. In the Waterloo Conservation Area close to Waterloo Station, Southwark tube. Centrally located, within walking distance of Thames River Walk, IMAX, The Cut, The Old Vic Theatre. You can easily walk into the City of London and Covent Garden. Chain free, ready to buy. A real gem in the Heart of London.

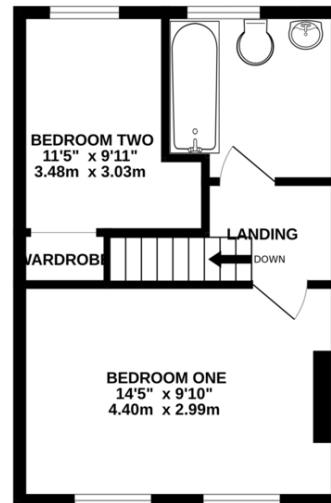


%epcGraph\_c\_1\_300%

GROUND FLOOR  
363 sq.ft. (33.7 sq.m.) approx.



1ST FLOOR  
316 sq.ft. (29.4 sq.m.) approx.



TOTAL FLOOR AREA: 786sq. ft. (73.0 sq.m.) approx.

Whilst every attempt has been made to ensure the accuracy of the floorplan contained here, measurements of doors, windows, rooms and any other items are approximate and no responsibility is taken for any error, omission or mis-statement. This plan is for illustrative purposes only and should be used as such by any prospective purchaser. The services, systems and appliances shown have not been tested and no guarantee as to their operability or efficiency can be given.  
Made with Metropix ©2024

## Viewing Arrangements

Strictly by appointment

## Contact Details

121 Denmark Hill

London

SE5 8EN

[www.urbanvillagehomes.co.uk](http://www.urbanvillagehomes.co.uk)

[sales@urbanvillagehomes.com](mailto:sales@urbanvillagehomes.com)

020 3519 9121

Agents Note: Whilst every care has been taken to prepare these sales particulars, they are for guidance purposes only. All measurements are approximate and are for general guidance purposes only and whilst every care has been taken to ensure their accuracy, they should not be relied upon and potential buyers are advised to recheck the measurements