



38 St. Lawrence Way | London |
SW9 6NP

%tenure%

£3,800 pcm

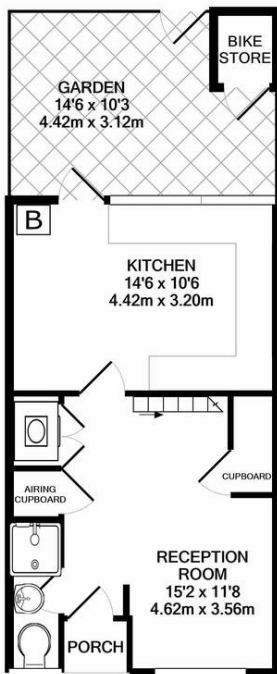
- House
- Three stories
- Four double bedrooms
- Three shower rooms
- Good sized kitchen
- Loft room (storage/office)
- Well presented
- Brixton Tube, Village POP
- Stockwell Tube
- Furnished 9th August



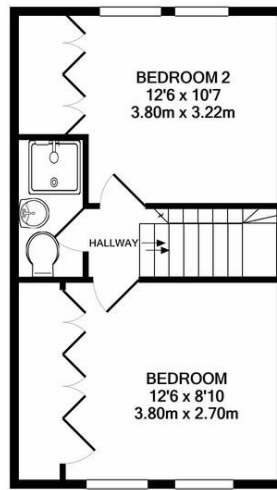
Four similar-sized good double bedrooms, three shower rooms, loft office /storage. Over three stories with a pretty walled rear garden. In very good condition throughout. Good sized kitchen, located off Brixton Road, 1/2 mile to Brixton and Stockwell tubes. Brixton Village and POP. Terrific location. Furnished available 9th August. HMO compliant



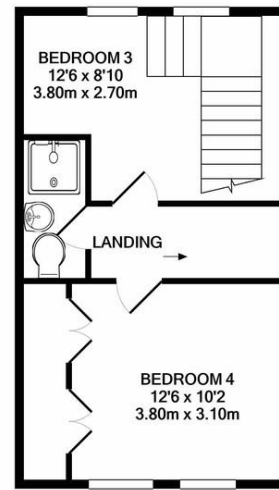
%epcGraph_c_1_300%



GROUND FLOOR
APPROX. FLOOR
AREA 386 SQ.FT.
(35.8 SQ.M.)



1ST FLOOR
APPROX. FLOOR
AREA 372 SQ.FT.
(34.6 SQ.M.)



2ND FLOOR
APPROX. FLOOR
AREA 372 SQ.FT.
(34.6 SQ.M.)

TOTAL APPROX. FLOOR AREA 1130 SQ.FT. (104.9 SQ.M.)

Whilst every attempt has been made to ensure the accuracy of the floor plan contained here, measurements of doors, windows, rooms and any other items are approximate and no responsibility is taken for any error, omission, or mis-statement. This plan is for illustrative purposes only and should be used as such by any prospective purchaser. The services, systems and appliances shown have not been tested and no guarantee as to their operability or efficiency can be given
Made with Metropix ©2022

Viewing Arrangements

Strictly by appointment

Contact Details

121 Denmark Hill

London

SE5 8EN

www.urbanvillagehomes.co.uk

lettings@urbanvillagehomes.com

020 3519 9121

Agents Note: Whilst every care has been taken to prepare these sales particulars, they are for guidance purposes only. All measurements are approximate and for general guidance purposes only and whilst every care has been taken to ensure their accuracy, they should not be relied upon and potential buyers are advised to recheck the measurements