



13 Wingmore Road | London | SE24  
OAS

Freehold

£850,000

- 4 bed house
- Potential to extend
- Townhouse
- Ruskin park
- Generous garden
- Original features
- Excellent transport links
- SE24
- Three floors
- Local amenities

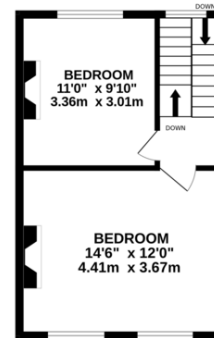
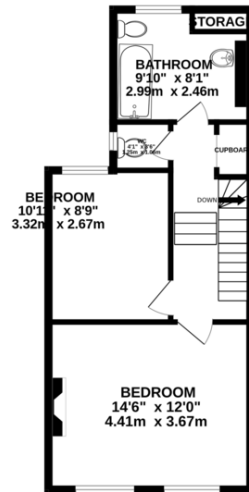
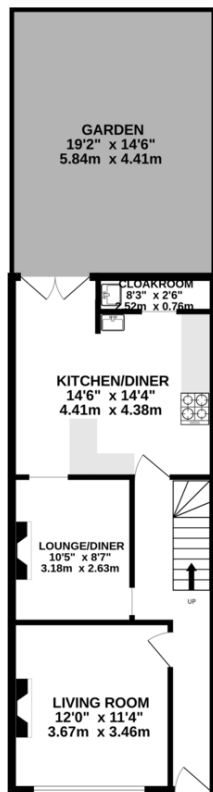


Terraced town house, set over three floors, full of character and charm. The property has four double bedrooms, two reception rooms and a kitchen dinner, with larder that leads onto a pretty & generous garden. Upstairs offers four well proportioned double bedrooms, bathroom and additional WC, with potential to further extend.

Situated within the very popular Herne Hill, Camberwell, Brixton borders, with Ruskin park on the doorstep. Excellent transport links, walking distance of Loughborough Junction & Denmark Hill station and easy access to Brixton tube. A short stroll further for Herne Hill Village, Brockwell Park or Dulwich Village



%epcGraph\_c\_1\_300%



TOTAL FLOOR AREA: 1302sq.ft. (121.0 sq.m.) approx.

Whilst every attempt has been made to ensure the accuracy of the floorplan contained here, measurements of doors, windows, rooms and any other items are approximate and no responsibility is taken for any error, omission or mis-statement. This plan is for illustrative purposes only and should be used as such by any prospective purchaser. The services, systems and appliances shown have not been tested and no guarantee as to their operability or efficiency can be given.  
Made with Metropix ©2024

## Viewing Arrangements

Strictly by appointment

## Contact Details

121 Denmark Hill

London

SE5 8EN

[www.urbanvillagehomes.co.uk](http://www.urbanvillagehomes.co.uk)

[sales@urbanvillagehomes.com](mailto:sales@urbanvillagehomes.com)

020 3519 9121

Agents Note: Whilst every care has been taken to prepare these sales particulars, they are for guidance purposes only. All measurements are approximate and for general guidance purposes only and whilst every care has been taken to ensure their accuracy, they should not be relied upon and potential buyers are advised to recheck the measurements