



East Dulwich Grove | London | SE22

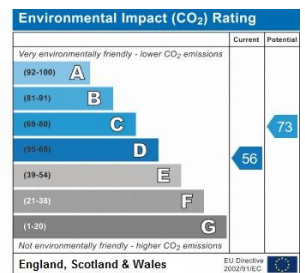
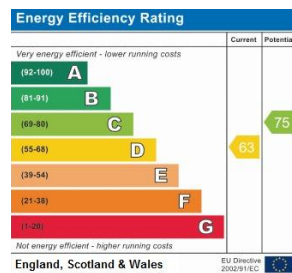
%tenure%

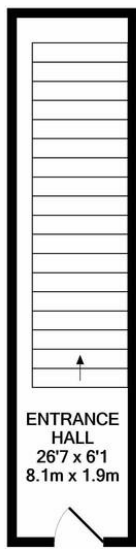
£2,100 pcm

- Large Victorian Apartment
- Three double bedrooms
- Two bathrooms
- Large reception room
- Lots of character
- Lots of natural light
- A spacious feel
- Top two floors
- London bridge in 14 mins
- Option part finished Available now

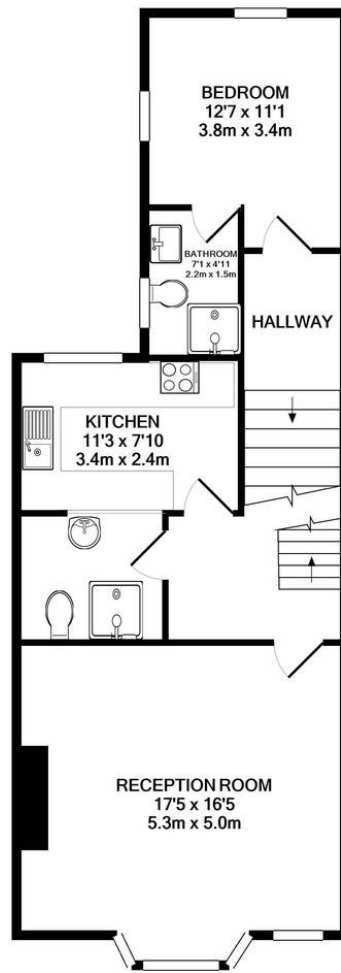


VIDEO AVAILABLE Stunning and impressively large split level Victorian maisonette . Situated on the top two floors with lots of natural light. A large reception room with feature Victorian fireplace, ideal for three professional sharers. There are three good sized double bedrooms; one has an en-suite bathroom in addition to the main bathroom. Well presented and located within easy walking distance of East Dulwich which has frequent trains to London Bridge; average journey time 14 mins. Available part furnished optional and available now.

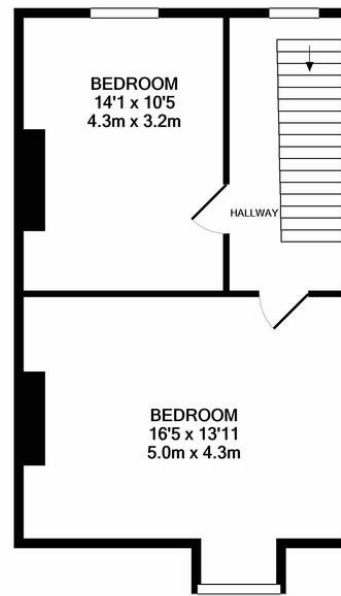




ENTRANCE FLOOR
APPROX. FLOOR
AREA 161 SQ.FT.
(15.0 SQ.M.)



1ST FLOOR
APPROX. FLOOR
AREA 653 SQ.FT.
(60.7 SQ.M.)



2ND FLOOR
APPROX. FLOOR
AREA 436 SQ.FT.
(40.5 SQ.M.)

TOTAL APPROX. FLOOR AREA 1251 SQ.FT. (116.2 SQ.M.)

Whilst every attempt has been made to ensure the accuracy of the floor plan contained here, measurements of doors, windows, rooms and any other items are approximate and no responsibility is taken for any error, omission, or mis-statement. This plan is for illustrative purposes only and should be used as such by any prospective purchaser. The services, systems and appliances shown have not been tested and no guarantee as to their operability or efficiency can be given
Made with Metropix ©2020

Viewing Arrangements

Strictly by appointment

Contact Details

121 Denmark Hill

London

SE5 8EN

www.urbanvillagehomes.co.uk

lettings@urbanvillagehomes.com

020 3519 9121

Agents Note: Whilst every care has been taken to prepare these sales particulars, they are for guidance purposes only. All measurements are approximate and for general guidance purposes only and whilst every care has been taken to ensure their accuracy, they should not be relied upon and potential buyers are advised to recheck the measurements