



Beaulieu Close | London | SE5

£2,600 pcm

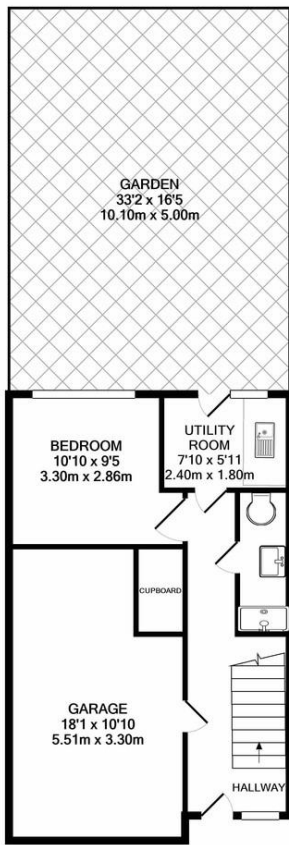
- 3 Double Bedrooms and a Study
- Private Garden
- Off Street Parking
- Open Kitchen and living
- Two Modern Bathrooms
- Town House
- Denmark Hill Station
- Ruskin Park
- East Dulwich Station
- Camberwell



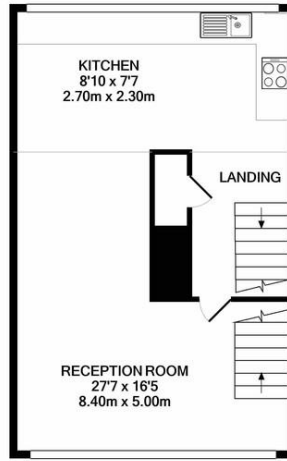
A spacious three and a half bedroom townhouse build over three floors, with large windows and plenty of light. There are three double bedrooms, a study, two bathrooms, and a rear garden. On the ground floor there is also a large integrated garage, a utility room, the first of the three double bedrooms, and a shower room with WC. on the first floor there is the large open plan kitchen and living space with modern appliances. At the top of the house there are the remaining two double bedrooms, the study and the family bathroom. The property comes unfurnished and is available now. Walking distance to Denmark Hill station, Kings college hospital, Ruskin Park and the popular Heme Hill with Brockwell Park and Lido. A lovely property in an excellent location. Off street parking.



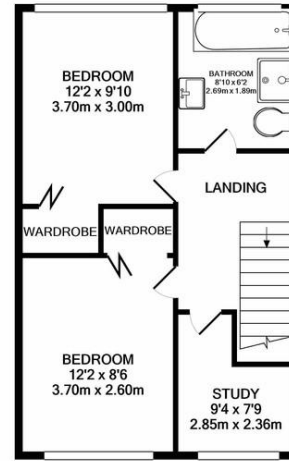
%epcGraph_c_1_300%



GROUND FLOOR
APPROX. FLOOR
AREA 464 SQ.FT.
(43.1 SQ.M.)



1ST FLOOR
APPROX. FLOOR
AREA 459 SQ.FT.
(42.7 SQ.M.)



2ND FLOOR
APPROX. FLOOR
AREA 471 SQ.FT.
(43.8 SQ.M.)

TOTAL APPROX. FLOOR AREA 1395 SQ.FT. (129.6 SQ.M.)

Whilst every attempt has been made to ensure the accuracy of the floor plan contained here, measurements of doors, windows, rooms and any other items are approximate and no responsibility is taken for any error, omission, or mis-statement. This plan is for illustrative purposes only and should be used as such by any prospective purchaser. The services, systems and appliances shown have not been tested and no guarantee as to their operability or efficiency can be given
Made with Metropix ©2022

Viewing Arrangements

Strictly by appointment

Contact Details

121 Denmark Hill

London

SE5 8EN

www.urbanvillagehomes.co.uk

lettings@urbanvillagehomes.com

020 3519 9121

Agents Note: Whilst every care has been taken to prepare these sales particulars, they are for guidance purposes only. All measurements are approximate and for general guidance purposes only and whilst every care has been taken to ensure their accuracy, they should not be relied upon and potential buyers are advised to recheck the measurements