



Nettlefold Place | London | SE27 0JW

Leasehold

£475,000

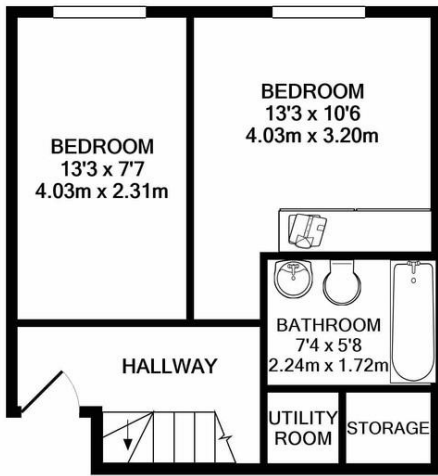
- Split-level Warehouse Style
- Direct bus to Kings (20 mins)
- Timber floors throughout
- Open Plan
- Two Double Bedrooms
- Good amenities
- Second floor
- Natural Light
- Close To Station
- Chain free



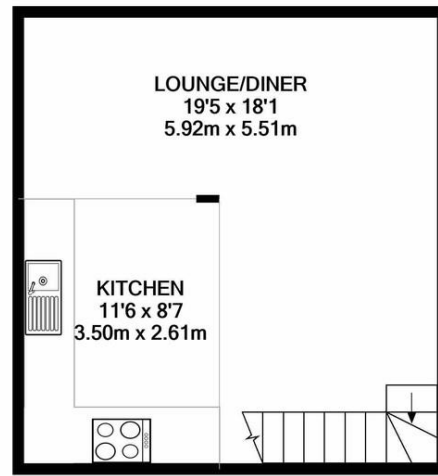
A well-insulated, split-level warehouse style conversion with high ceilings and large windows, flooding the property with natural light. There is timber flooring throughout, and two well-proportioned double bedrooms, a modern bathroom, a super large open plan kitchen living area and plenty of storage. The development is situated on a quiet street in West Norwood, within walking distance of the popular and vibrant high street, with cafes, restaurants and boutique shops. The Picture House cinema and library complex are across the road, and the post office on the doorstep. A two-minute walk to the station provides good transport links. The property is sold, chain free, with a long lease, and secure bike storage.



%epcGraph_c_1_300%



GROUND FLOOR
APPROX. FLOOR
AREA 342 SQ.FT.
(31.8 SQ.M.)



1ST FLOOR
APPROX. FLOOR
AREA 351 SQ.FT.
(32.6 SQ.M.)

TOTAL APPROX. FLOOR AREA 693 SQ.FT. (64.4 SQ.M.)

Whilst every attempt has been made to ensure the accuracy of the floor plan contained here, measurements of doors, windows, rooms and any other items are approximate and no responsibility is taken for any error, omission, or mis-statement. This plan is for illustrative purposes only and should be used as such by any prospective purchaser. The services, systems and appliances shown have not been tested and no guarantee as to their operability or efficiency can be given
Made with Metropix ©2022

Viewing Arrangements

Strictly by appointment

Contact Details

121 Denmark Hill

London

SE5 8EN

www.urbanvillagehomes.co.uk

sales@urbanvillagehomes.com

020 3519 9121

Agents Note: Whilst every care has been taken to prepare these sales particulars, they are for guidance purposes only. All measurements are approximate are for general guidance purposes only and whilst every care has been taken to ensure their accuracy, they should not be relied upon and potential buyers are advised to recheck the measurements