



40 Gilesmead | London | SE5 7LN

Leasehold

£550,000

- Generous terrace
- Two bedrooms
- Burgess Park
- Architecturally designed building
- Camberwell Church street
- Ruskin Park
- Vibrant food scene
- Ruskin Park
- Excellent transport links
- Local arts scene

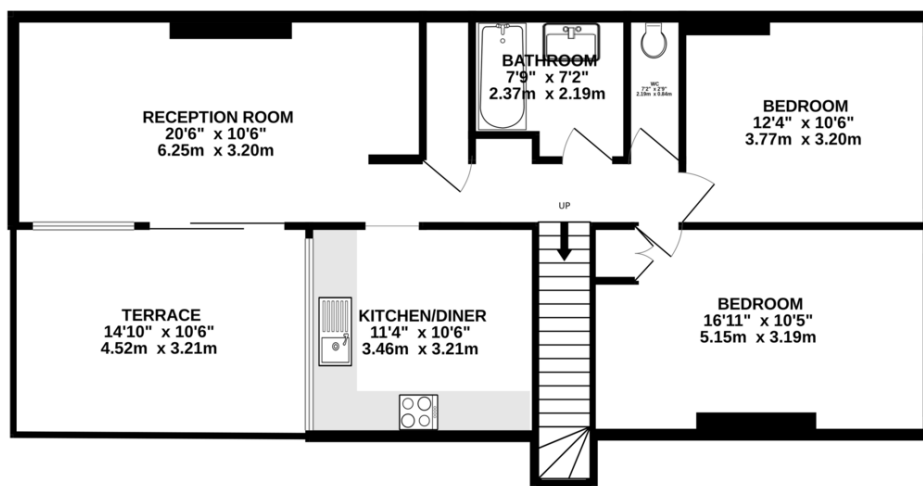


Beautifully stylish apartment in the sought after Gilesmead estate, an architecturally interesting building with a strong community feel. Light and spacious set across the third floor. Two bedroom apartment with generous terrace and space to entertain. Located on Church street, close to all Camberwell & Peckham's excellent bar and restaurants, walking distance to Burgess park & Ruskin park,. Good transport links.



%epcGraph_c_1_300%

FIRST FLOOR
786 sq.ft. (73.0 sq.m.) approx.



TWO BEDROOM FLAT

TOTAL FLOOR AREA: 786 sq. ft. (73.0 sq.m.) approx.

Whilst every attempt has been made to ensure the accuracy of the floorplan contained here, measurements of doors, windows, rooms and any other items are approximate and no responsibility is taken for any error, omission or mis-statement. This plan is for illustrative purposes only and should be used as such by any prospective purchaser. The services, systems and appliances shown have not been tested and no guarantee as to their operability or efficiency can be given.
Made with Metropix ©2024

Viewing Arrangements

Strictly by appointment

Contact Details

121 Denmark Hill

London

SE5 8EN

www.urbanvillagehomes.co.uk

sales@urbanvillagehomes.com

020 3519 9121

Agents Note: Whilst every care has been taken to prepare these sales particulars, they are for guidance purposes only. All measurements are approximate and for general guidance purposes only and whilst every care has been taken to ensure their accuracy, they should not be relied upon and potential buyers are advised to recheck the measurements