



Denmark Hill | London | SE5 8ED

Share of Freehold

£430,000

- Period apartment block
- Immaculate condition
- Two bedroom
- Off street parking
- Share in freehold
- Communal gardens
- Dulwich Village
- Herne Hill
- Ruskin Park
- Brass passenger lift.

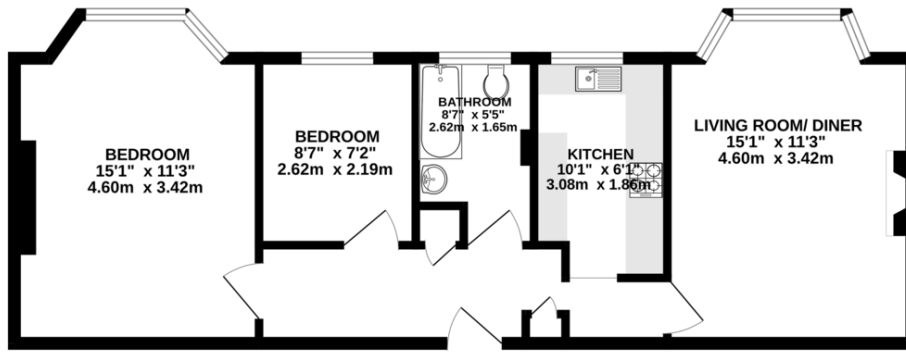


Rutland Court is a sought after period mansion block with a strong community feel, located at the top of Denmark Hill, near Ruskin Park. A beautiful two bedroom, first floor property in immaculate condition, lots of natural light and pretty views over the shared garden. Architectural and period features throughout the building including a fully refurbished brass passenger lift. Off street parking available and the location is very convenient for Denmark Hill station, Dulwich village and Herne Hill.



%epcGraph_c_1_300%

FIRST FLOOR
646 sq.ft. (60.0 sq.m.) approx.



TWO BEDROOM APARTMENT

TOTAL FLOOR AREA: 646 sq.ft. (60.0 sq.m.) approx.

Whilst every attempt has been made to ensure the accuracy of the floorplan contained here, measurements of doors, windows, rooms and any other items are approximate and no responsibility is taken for any error, omission or mis-statement. This plan is for illustrative purposes only and should be used as such by any prospective purchaser. The services, systems and appliances shown have not been tested and no guarantee as to their operability or efficiency can be given.
Made with Metropix ©2024

Viewing Arrangements

Strictly by appointment

Contact Details

121 Denmark Hill

London

SE5 8EN

www.urbanvillagehomes.co.uk

sales@urbanvillagehomes.com

020 3519 9121

Agents Note: Whilst every care has been taken to prepare these sales particulars, they are for guidance purposes only. All measurements are approximate and for general guidance purposes only and whilst every care has been taken to ensure their accuracy, they should not be relied upon and potential buyers are advised to recheck the measurements