



102 Bushey Hill Road | London | SE5  
8QQ

Share of Freehold

£450,000

- Victorian conversion
- Split level apartment
- Raised ground floor
- Large bay window
- Oak floors
- Double bedroom
- 2nd Bedroom, study
- Peckham Rye
- Camberwell
- Share of freehold

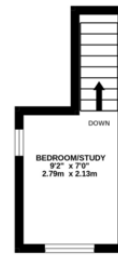
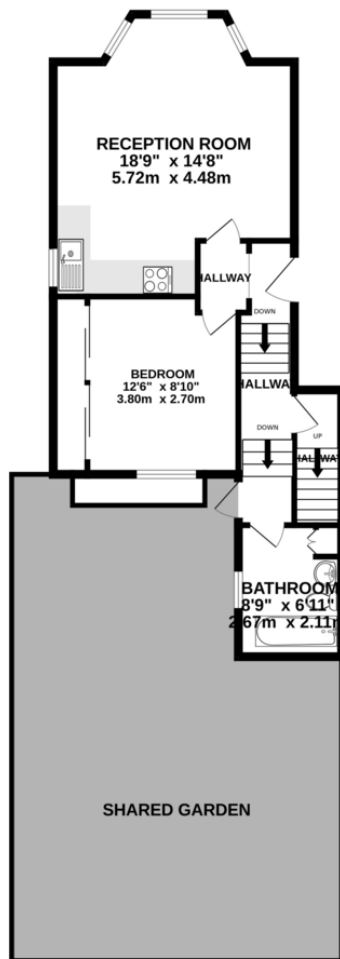


A superb split level Victorian conversion garden flat with one double bedroom and large additional bedroom/study room, in the sought after Bellenden Road area, Peckham.

High ceilings and oak floors make a beautiful kitchen and living room with plenty of period features and bay window. The master bedroom has good storage and garden views. Stairs lead up to an additional study room, ideal for working from home.



Energy Efficiency Rating			
Score	Energy rating	Current	Potential
92+	A		
81-91	B		
69-80	C		74   C
55-68	D	65   D	
39-54	E		
21-38	F		
1-20	G		



Whilst every attempt has been made to ensure the accuracy of the floorplan contained here, measurements of doors, windows, rooms and any other items are approximate and no responsibility is taken for any error, omission or mis-statement. This plan is for illustrative purposes only and should be used as such by any prospective purchaser. The services, systems and appliances shown have not been tested and no guarantee as to their operability or efficiency can be given.  
Made with Metropix ©2023

## Viewing Arrangements

Strictly by appointment

## Contact Details

121 Denmark Hill

London

SE5 8EN

[www.urbanvillagehomes.co.uk](http://www.urbanvillagehomes.co.uk)

[sales@urbanvillagehomes.com](mailto:sales@urbanvillagehomes.com)

020 3519 9121

Agents Note: Whilst every care has been taken to prepare these sales particulars, they are for guidance purposes only. All measurements are approximate and are for general guidance purposes only and whilst every care has been taken to ensure their accuracy, they should not be relied upon and potential buyers are advised to recheck the measurements