



401 Weymouth Building | Elephant
Park | SE17 1GB

Leasehold

£775,000

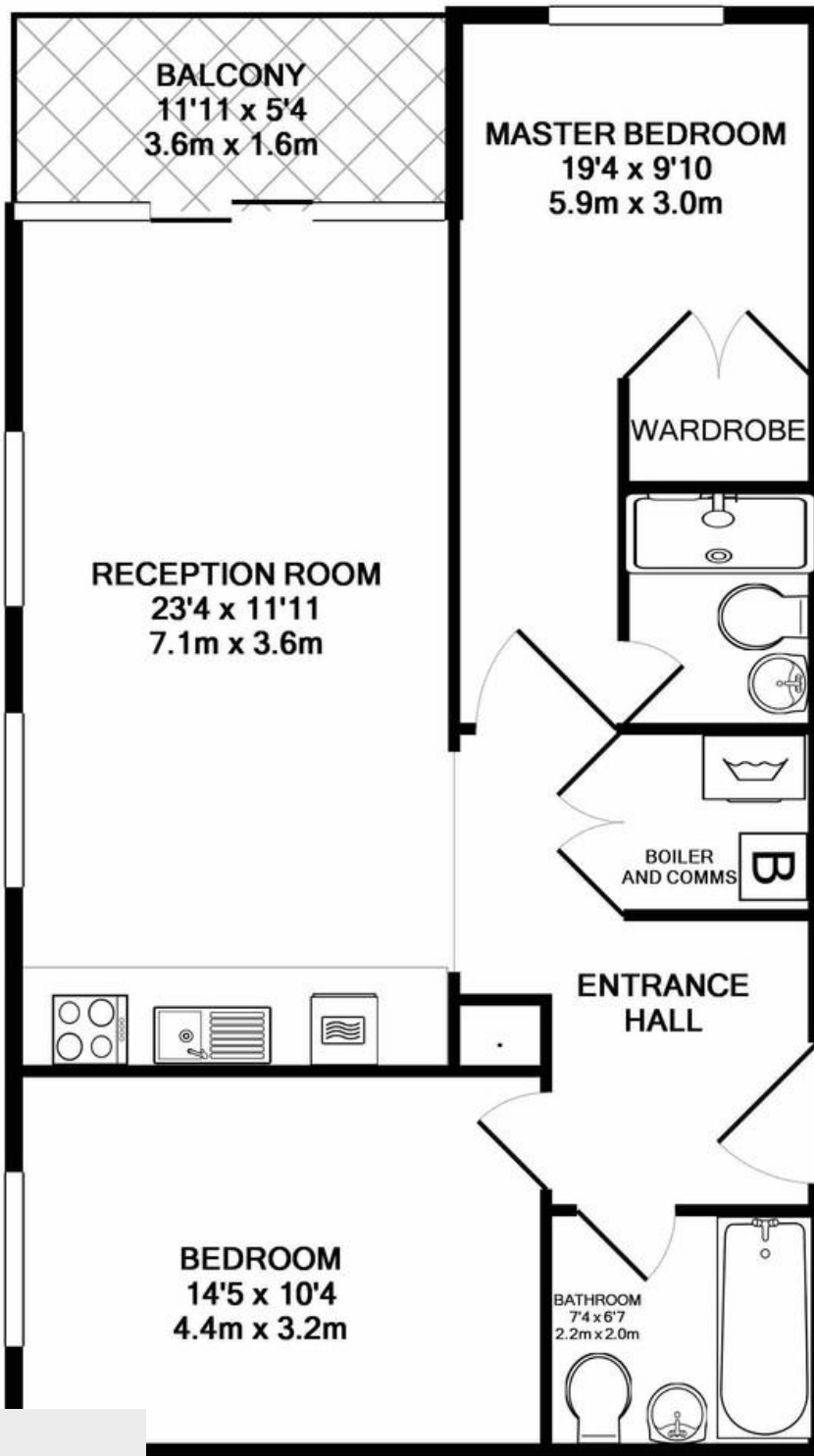
- Built 2019
- Stylish interiors
- Two double bedrooms
- Two bathrooms
- Dual aspect balcony
- Overlooking park
- Fourth floor
- Gym and concierge (24 Hours)
- Elephant Park
- South Central Location



A beautifully modern, stylish apartment on the 4th floor of this prestigious development within Elephant Park, completed in 2019. With dual aspect balcony overlooking the park and beyond. A dynamic new neighbourhood in Central South London, Elephant Park is half a mile from the River Thames South Bank, with many restaurants, bars and other amenities. The apartment features a 24/7 concierge and fully equipped gym, 'residents' suite' communal gardens and terrific transport links with 2 tube lines (Bakerloo and Northern Line) 0.1 miles away and main line services into London Bridge, London Blackfriars (one stop) and Charing Cross, all within a 5-minute walk. The apartment is virtually brand new and has a large balcony overlooking the new Elephant Park green space. Heating, hot water & buildings insurance



%epcGraph_c_1_300%



Viewing Arrangements

Strictly by appointment

Contact Details

121 Denmark Hill

London

SE5 8EN

www.urbanvillagehomes.co.uk

sales@urbanvillagehomes.com

020 3519 9121

APPROX. FLOOR AREA 786 SQ.FT. (73.0 SQ.M.)

It has been made to ensure the accuracy of the floor plan contained here, measurements of rooms and any other items are approximate and no responsibility is taken for any error, omission or inaccuracy. This plan is for illustrative purposes only and should be used as such by any prospective buyers. All services, systems and appliances shown have not been tested and no guarantee as to their operability or efficiency can be given.

Made with Metropix ©2019

Agents Note: Whilst every care has been taken to prepare these sales particulars, they are for guidance purposes only. All measurements are approximate and for general guidance purposes only and whilst every care has been taken to ensure their accuracy, they should not be relied upon and potential buyers are advised to recheck the measurements.