



Finsen Road | London | SE5

Freehold

£1,450,000

- Three double bedrooms
- Open plan kitchen
- High specification
- Private garden
- Potential to extend into loft / basement
- Overlooking Ruskin Park
- Denmark Hill
- Herne Hill
- Brixton
- Loughborough Junction

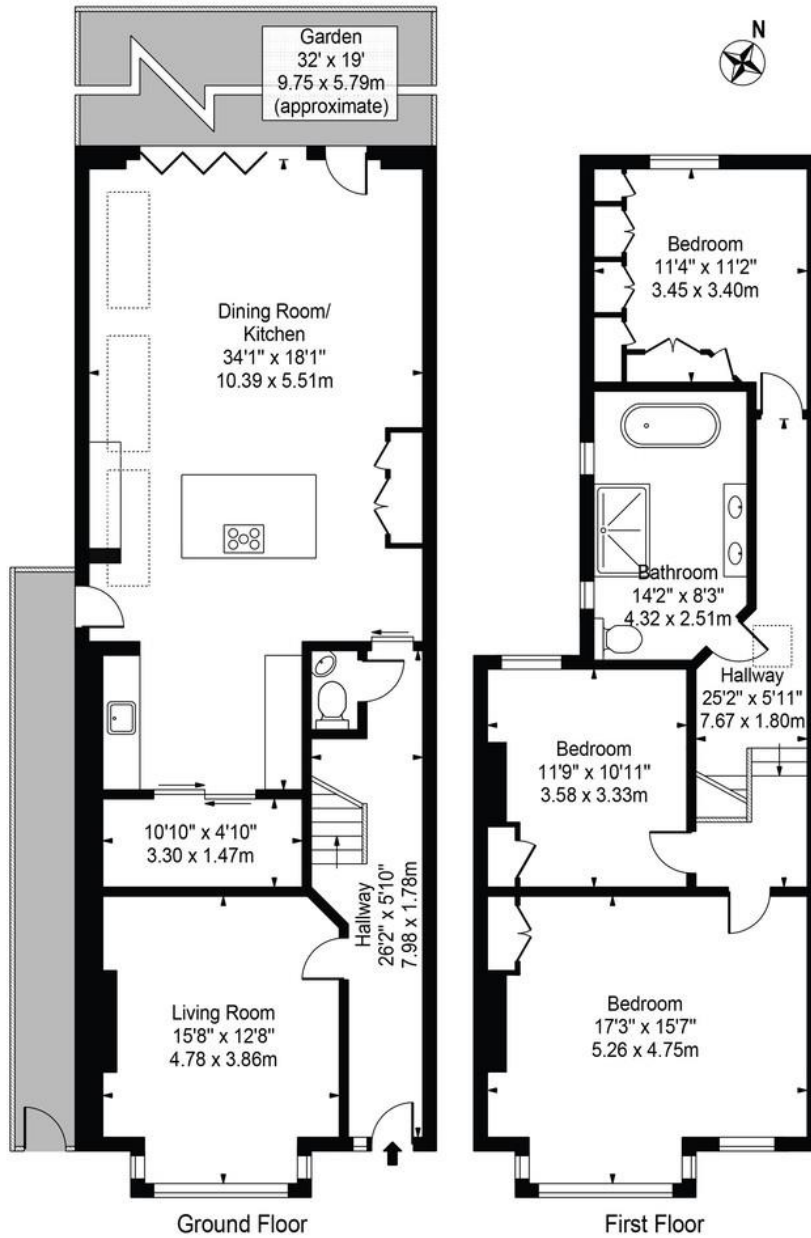


An impeccable three-bedroom house on the desirable Finsen Road overlooking Ruskin park; one of the most photographed roads in London (Telegraph press). This tastefully extended property has a spacious open-plan kitchen diner which is the heart of the home and perfect for modern living. Three double bedrooms with potential to extend into the loft, high quality materials have been used throughout including a very modern family bathroom. Walking distance to Herne Hill, Camberwell and Loughborough junction residents benefit from the vibrant local community, proximity to excellent transport links, and easy access to local parks.



Finsen Road

Approx. Gross Internal Area 1715 Sq Ft - 159.33 Sq M



For Illustration Purposes Only - Not To Scale

This floor plan should be used as a general outline for guidance only and does not constitute in whole or in part an offer or contract. Any intending purchaser or lessee should satisfy themselves by inspection, searches, enquiries and full survey as to the correctness of each statement. Any areas, measurements or distances quoted are approximate and should not be used to value a property or be the basis of any sale or let.

Viewing Arrangements

Strictly by appointment

Contact Details

121 Denmark Hill

London

SE5 8EN

www.urbanvillagehomes.co.uk

sales@urbanvillagehomes.com

020 3519 9121

Agents Note: Whilst every care has been taken to prepare these sales particulars, they are for guidance purposes only. All measurements are approximate and for general guidance purposes only and whilst every care has been taken to ensure their accuracy, they should not be relied upon and potential buyers are advised to recheck the measurements