



311 Camberwell Road | London | SE5
OHQ

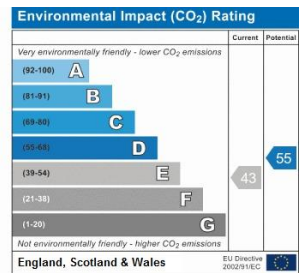
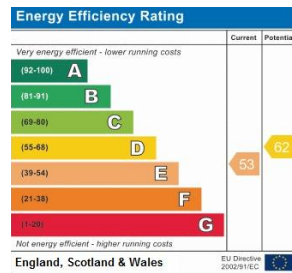
Share of Freehold

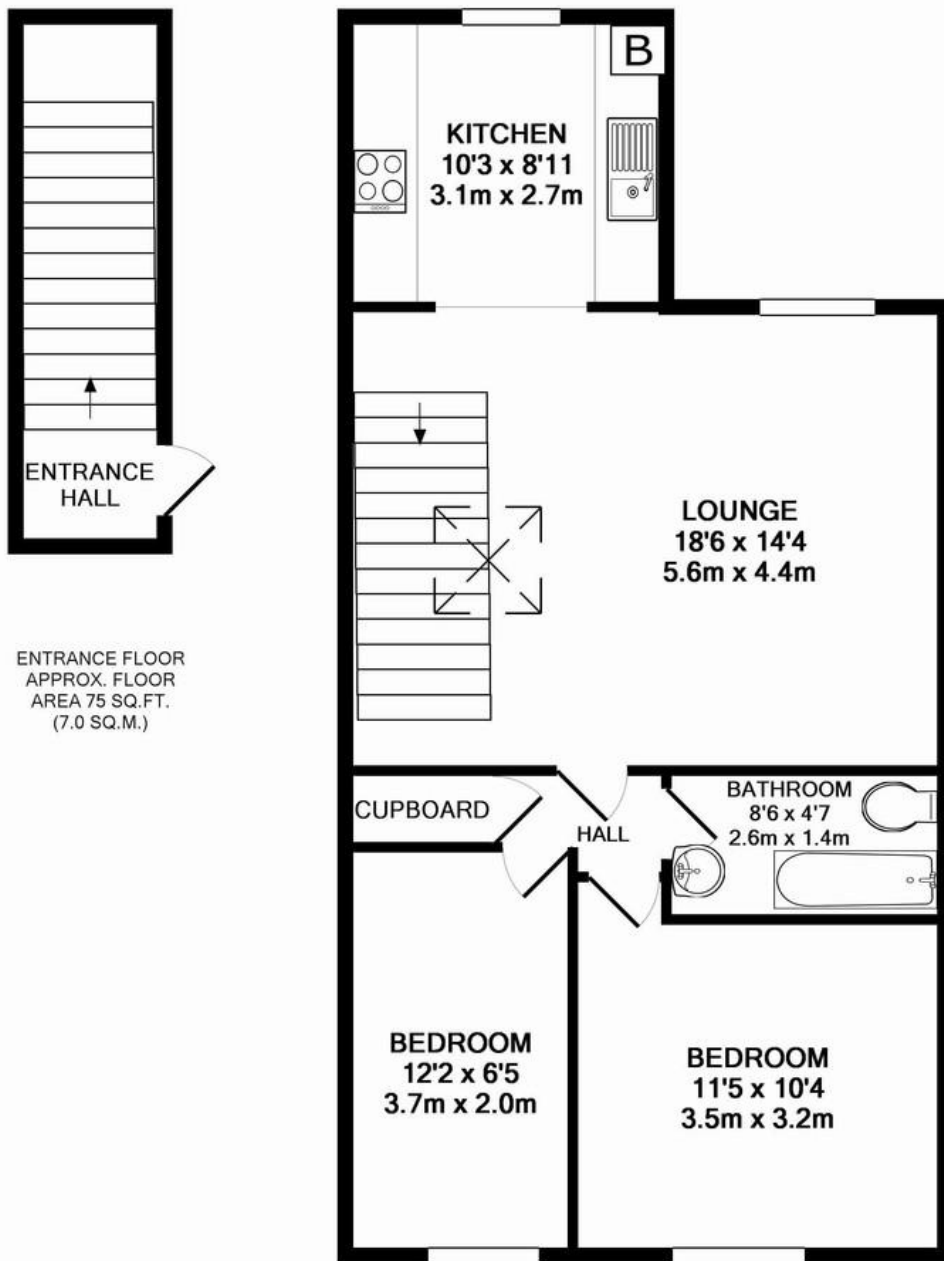
£357,000

- Top floor apartment
- Victorian conversion
- Two double bedrooms
- Kitchen with dining table
- Large skylight for natural light
- Victorian fire place
- Close to Kings College hospital
- Denmark Hill Station
- Elephant and Castle
- Camberwell Green



A delightful bright and airy top floor Victorian apartment, in central Camberwell. Two double bedrooms, living room, separate kitchen, with space for a small dining table. Large skylight lets lots of natural light in. A pleasant spacious flat, ideal for a couple or professional sharers. Walking distance to Elephant and Castle, Kennington and Denmark Hill. Very close to Kings College hospital. Currently rented to sharers at £1450 PCM Assured shorthold tenancy, 2 months notice to end.





ENTRANCE FLOOR
APPROX. FLOOR
AREA 75 SQ.FT.
(7.0 SQ.M.)

3RD FLOOR
APPROX. FLOOR
AREA 630 SQ.FT.
(58.6 SQ.M.)

TOTAL APPROX. FLOOR AREA 705 SQ.FT. (65.5 SQ.M.)

Every effort has been made to ensure the accuracy of the floor plan contained here, measurements of rooms and any other items are approximate and no responsibility is taken for any error, omission or mis-statement. This plan is for illustrative purposes only and should be used as such by any prospective buyer. The services, systems and appliances shown have not been tested and no guarantee as to their operability or efficiency can be given.
Made with Metropix ©2016

Viewing Arrangements

Strictly by appointment

Contact Details

121 Denmark Hill

London

SE5 8EN

www.urbanvillagehomes.co.uk

sales@urbanvillagehomes.com

020 3519 9121

Agents Note: Whilst every care has been taken to prepare these sales particulars, they are for guidance purposes only. All measurements are approximate and are for general guidance purposes only and whilst every care has been taken to ensure their accuracy, they should not be relied upon and potential buyers are advised to recheck the measurements.