



Wiverton Road | London | SE26 5JB

£2,000 pcm

- Large Victorian Semi
- Large through lounge
- Separate Dining room
- Rear garden
- Side access
- Well presented
- Three double bedrooms
- Sydenham Road
- Sydenham Station
- Penge East Station



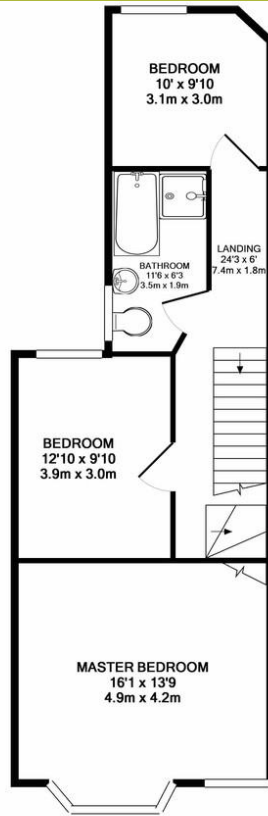
A large semi-detached Victorian house, full of character and charm. The house has three double bedrooms, a very large through lounge, separate dining room and kitchen. The bathroom is large and modern and features a shower cubicle in addition to a bath. This beautiful Victorian property is located within walking distance to Sydenham and Penge East stations, ensuring easy access into London terminals. Sydenham Road is full of cafes, shops and restaurants. A fantastic house for a family or professional sharers.



%epcGraph_c_1_300%



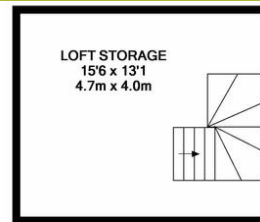
GROUND FLOOR
APPROX. FLOOR
AREA 627 SQ.FT.
(58.3 SQ.M.)



1ST FLOOR
APPROX. FLOOR
AREA 644 SQ.FT.
(59.8 SQ.M.)

TOTAL APPROX. FLOOR AREA 1474 SQ.FT. (136.9 SQ.M.)

Whilst every attempt has been made to ensure the accuracy of the floor plan contained here, measurements of doors, windows, rooms and any other items are approximate and no responsibility is taken for any error, omission, or mis-statement. This plan is for illustrative purposes only and should be used as such by any prospective purchaser. The services, systems and appliances shown have not been tested and no guarantee as to their operability or efficiency can be given
Made with Metropix ©2016



LOFT SPACE - STORAGE
APPROX. FLOOR
AREA 203 SQ.FT.
(18.8 SQ.M.)

Viewing Arrangements

Strictly by appointment

Contact Details

121 Denmark Hill

London

SE5 8EN

www.urbanvillagehomes.co.uk

lettings@urbanvillagehomes.com

020 3519 9121

Agents Note: Whilst every care has been taken to prepare these sales particulars, they are for guidance purposes only. All measurements are approximate and are for general guidance purposes only and whilst every care has been taken to ensure their accuracy, they should not be relied upon and potential buyers are advised to recheck the measurements