



Arnould Avenue | London | SE5

£2,100 pcm

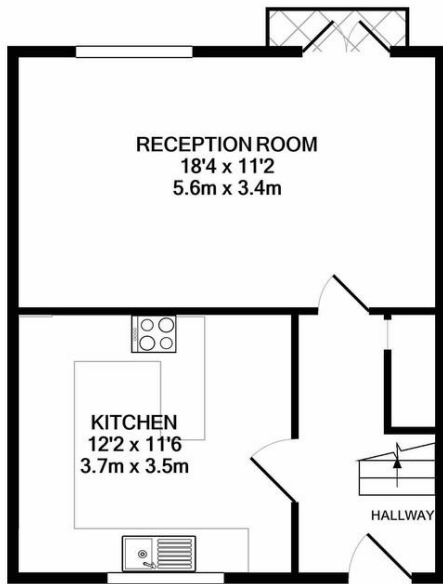
- Three bedrooms
- Private garden
- Large kitchen
- Furnished
- Own front door
- Split level
- Kings College Hospital
- Denmark Hill
- Ruskin Park
- Available immediately



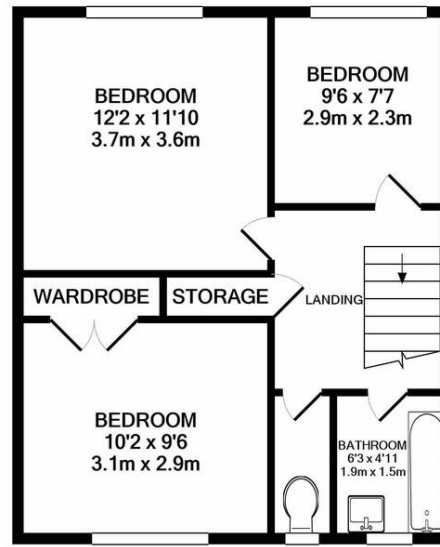
A three bedroom, split level maisonette with private garden. The apartment is well laid out over two full floors, giving ample space and storage. Large kitchen and lounge on the entrance floor and three bedrooms and a family bathroom upstairs. It is located between Denmark Hill Estate and the big Sainsburys on Denmark Hill, close to Denmark Hill Station, Kings College hospital, Ruskin Park, Dulwich and Lordship Lane. The private garden is to the front of the property. Available immediately and part furnished



%epcGraph_c_1_300%



GROUND FLOOR
APPROX. FLOOR
AREA 419 SQ.FT.
(39.0 SQ.M.)



1ST FLOOR
APPROX. FLOOR
AREA 419 SQ.FT.
(39.0 SQ.M.)

TOTAL APPROX. FLOOR AREA 839 SQ.FT. (77.9 SQ.M.)

Whilst every attempt has been made to ensure the accuracy of the floor plan contained here, measurements of doors, windows, rooms and any other items are approximate and no responsibility is taken for any error, omission, or mis-statement. This plan is for illustrative purposes only and should be used as such by any prospective purchaser. The services, systems and appliances shown have not been tested and no guarantee as to their operability or efficiency can be given
Made with Metropix ©2021

Viewing Arrangements

Strictly by appointment

Contact Details

121 Denmark Hill

London

SE5 8EN

www.urbanvillagehomes.co.uk

lettings@urbanvillagehomes.com

020 3519 9121

Agents Note: Whilst every care has been taken to prepare these sales particulars, they are for guidance purposes only. All measurements are approximate are for general guidance purposes only and whilst every care has been taken to ensure their accuracy, they should not be relied upon and potential buyers are advised to recheck the measurements