



Plot 1 Aldens Close

, Winterbourne Down, BS36 1ES

Price £325,000



A Stunning Brand New Development 'Aldens Close', offers a range of properties including Houses, Dormer Bungalows and Bungalows. Set in the ever popular location of Winterbourne Down, this exclusive development will gain interest quickly so book your site visit today. Each property has a 10 year builders warranty.



Development Information

A detached newly built bungalow located within 'Aldens Close' a brand new development of only 7 properties. Positioned within a quiet new cul-de-sac in the highly sought after village of Winterbourne Down which is conveniently positioned within easy reach of the amenities of Winterbourne with it's array of shops, pubs, restaurants, coffee shops and schools and country/river walks.

There are excellent transport links being within close proximity of the The Avon Ring Road and major motorway networks whilst being approx 2.7 miles away from Bristol Parkway train station.

Hallway

Lounge 12'2" x 14'9" (3.7 x 4.5)

Kitchen 10'10" x 8'10" (3.3 x 2.7)

Master Bedroom 10'10" x 10'6" (3.3 x 3.2)

Bedroom 2 10'6" x 8'10" (3.2 x 2.7)

Bathroom

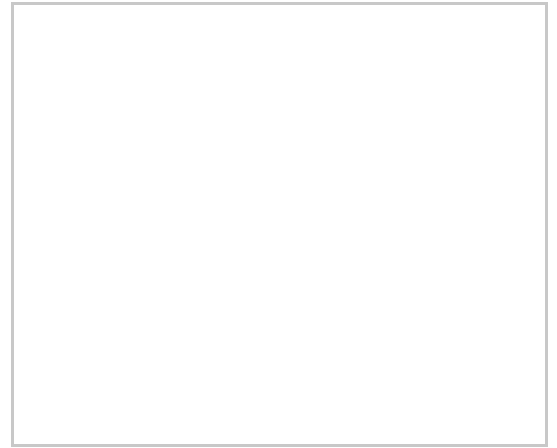
Enclosed Garden

Parking

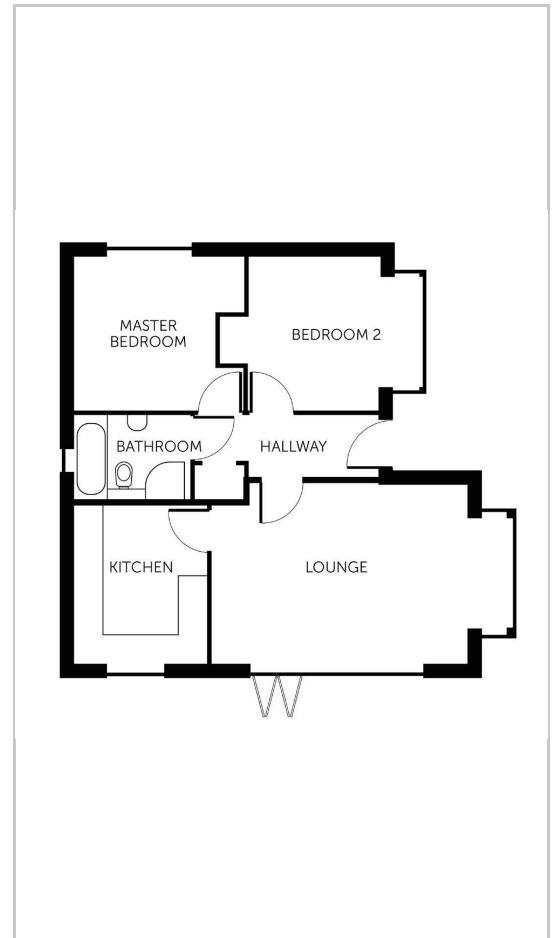
Measurements & Pictures

All measurements are taken from the architects drawings and should be used as guidance only. All pictures taken are a reference to show the finishes and may differ from plot to plot. External finishes plot sizes and landscaping may vary. For details of specific plots please refer to the sales consultant

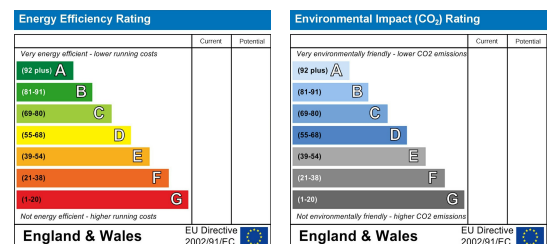
Area Map



Floor Plans



Energy Efficiency Graph



These particulars, whilst believed to be accurate are set out as a general outline only for guidance and do not constitute any part of an offer or contract. Intending purchasers should not rely on them as statements of representation of fact, but must satisfy themselves by inspection or otherwise as to their accuracy. No person in this firms employment has the authority to make or give any representation or warranty in respect of the property.