



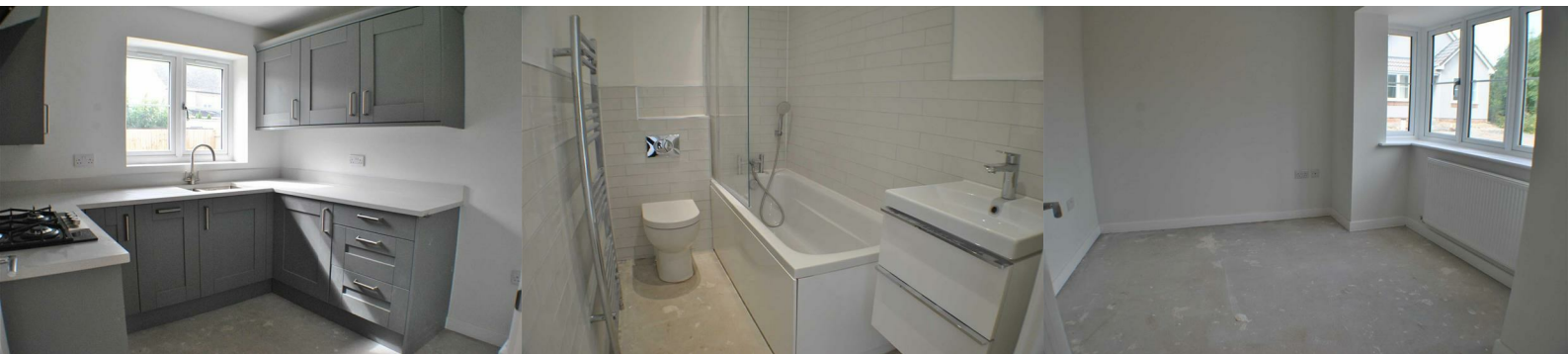
Plot 2 Aldens Close

, Winterbourne Down, BS36 1DE

Price £350,000



A Stunning Brand New Development 'Aldens Close', offers a range of properties including Houses, Dormer Bungalows and Bungalows. Set in the ever popular location of Winterbourne Down, this exclusive development will gain interest quickly so book your site visit today. Each property has a 10 year builders warranty



Development Information

A detached newly built bungalow located within 'Aldens Close' a brand new development of only 7 properties. Positioned within a quiet new cul-de-sac in the highly sought after village of Winterbourne Down which is conveniently positioned within easy reach of the amenities of Winterbourne with it's array of shops, pubs, restaurants, coffee shops and schools and country/river walks.

There are excellent transport links being within close proximity of the The Avon Ring Road and major motorway networks whilst being approx 2.7 miles away from Bristol Parkway train station.

Hallway

Lounge 14'5" x 13'5" (4.4 x 4.1)

Kitchen 8'6" x 8'6" (2.6 x 2.6)

Master Bedroom 15'5" x 8'6" (4.7 x 2.6)

En-suite Shower Room 7'7" x 4'11" (2.3 x 1.5)

Bathroom

Bedroom 2 11'2" x 8'2" (3.4 x 2.5)

Bedroom 3 12'2" x 8'10" (3.7 x 2.7)

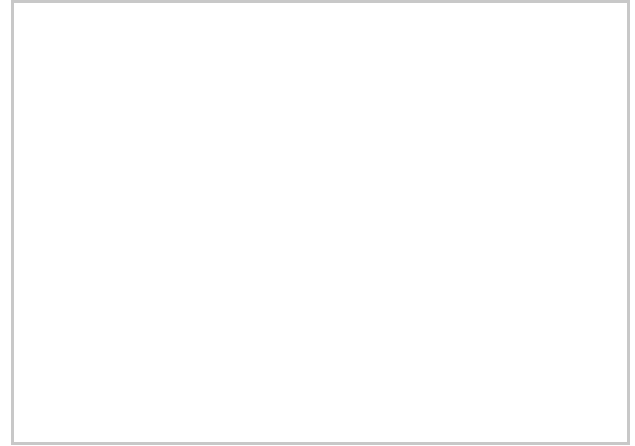
Enclosed Garden

Allocated Parking

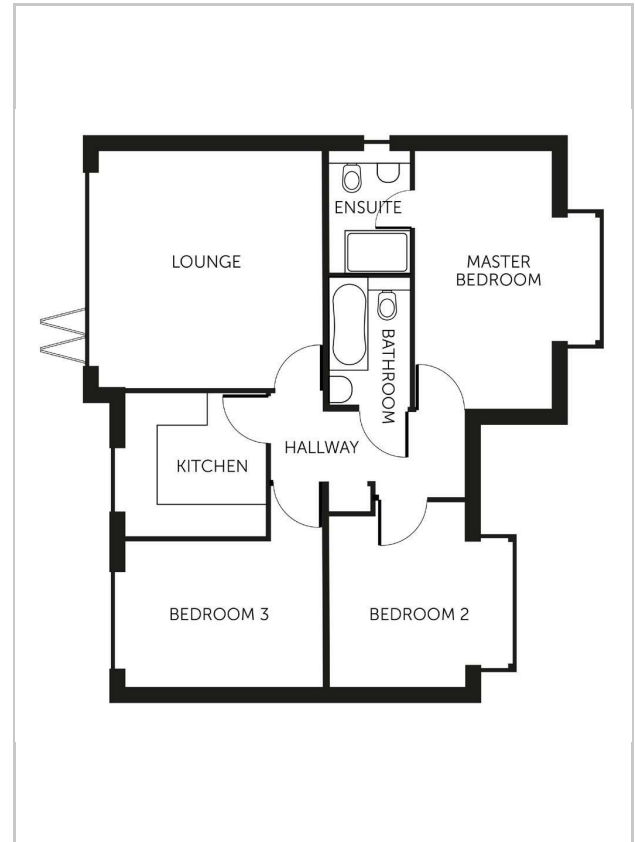
Measurements & Pictures

All measurements are taken from the architects drawings and should be used as guidance only. All pictures taken are a reference to show the finishes and may differ from plot to plot. External finishes plot sizes and landscaping may vary. For details of specific plots please refer to the sales consultant

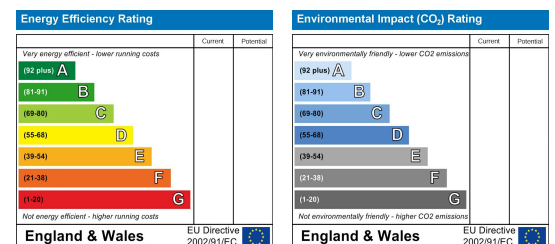
Area Map



Floor Plans



Energy Efficiency Graph



These particulars, whilst believed to be accurate are set out as a general outline only for guidance and do not constitute any part of an offer or contract. Intending purchasers should not rely on them as statements of representation of fact, but must satisfy themselves by inspection or otherwise as to their accuracy. No person in this firms employment has the authority to make or give any representation or warranty in respect of the property.

31 High Street, Kingswood, Bristol, BS15 4AA

Tel: 0117 967 9102 Email: oakestateagents@googlemail.com www.estateagentskingswood.co.uk