



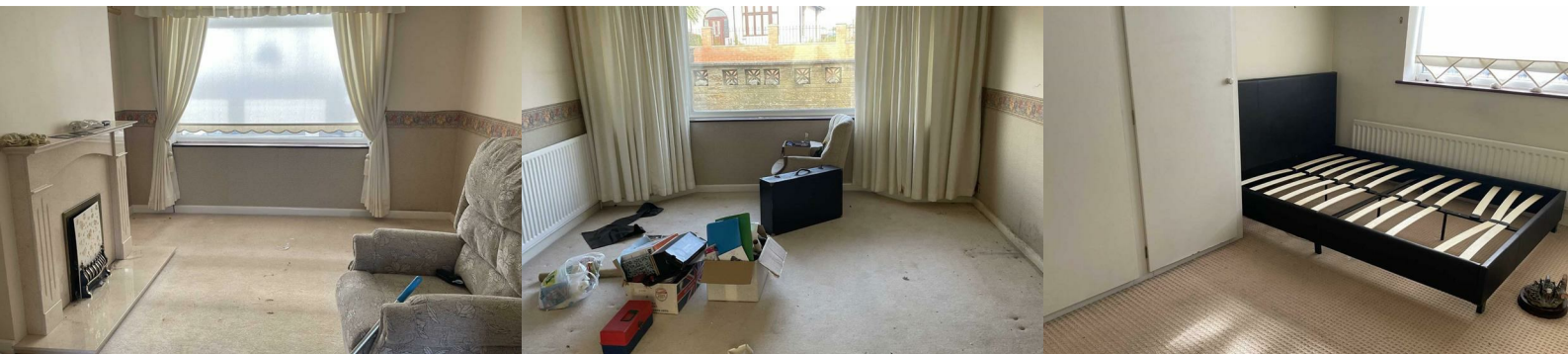
9 Nymphsfield

, Kingswood, BS15 1XP

Price £260,000



***SEMI DETACHED PROPERTY IN CUL DE SAC LOCATION WITH A LARGE DOUBLE GARAGE ***
Property Comprising of Hallway, Lounge, Dining Room, Kitchen, Landing, Three Bedrooms, Bathroom, Benefits From Double Glazing, Gas Central Heating, Small Low Maintenance Garden and Large Double Garage



Hallway

Entrance door, stairs, radiator, door to:-

Lounge 12'6" x 12'3" (3.81 x 3.73)

Double glazed bay window, radiator, opening to:-

Dining Room 12'2" x 10'11" (3.71 x 3.33)

Double glazed window, radiator, feature fireplace

Kitchen 16'2" x 7'2" (4.93 x 2.19)

Matching range of wall and base units with worktop space over, sink unit, built in cooker, space for washing machine, fridge freezer, double glazed window, radiator, door to:-

Conservatory 9'11" x 6'11" (3.01 x 2.10)

Double glazed construction with door leading to garden

Landing

Loft access, door to:-

Bedroom 1 14'3" x 11'2" (4.34 x 3.40)

Double glazed bay window, two radiators

Bedroom 2 12'2" x 9'3" (3.72 x 2.81)

Double glazed window, radiator, built in wardrobes

Bedroom 3 9'2" x 7'2" (2.79 x 2.18)

Double glazed window, radiator

Shower Room 9'10" x 5'5" (2.99 x 1.64)

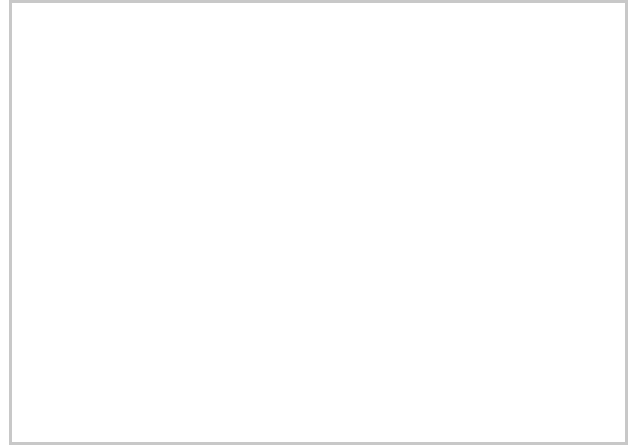
Three piece suite comprising of double shower cubical, low level wc, wash hand basin, double glazed window, radiator

Garden

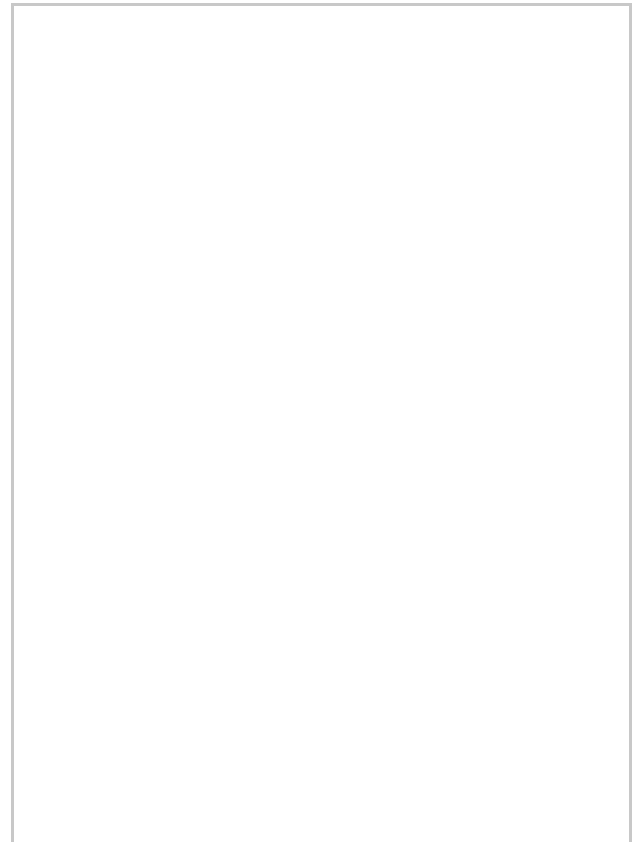
Low maintenance garden with side and rear access

Double Garage 21'0" x 16'11" (6.41 x 5.15)

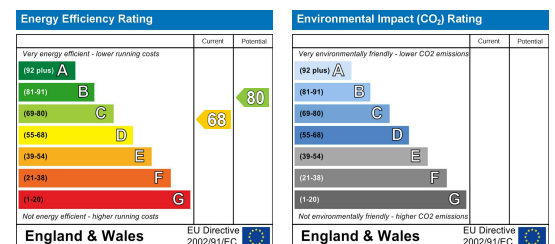
Area Map



Floor Plans



Energy Efficiency Graph



These particulars, whilst believed to be accurate are set out as a general outline only for guidance and do not constitute any part of an offer or contract. Intending purchasers should not rely on them as statements of representation of fact, but must satisfy themselves by inspection or otherwise as to their accuracy. No person in this firm's employment has the authority to make or give any representation or warranty in respect of the property.