



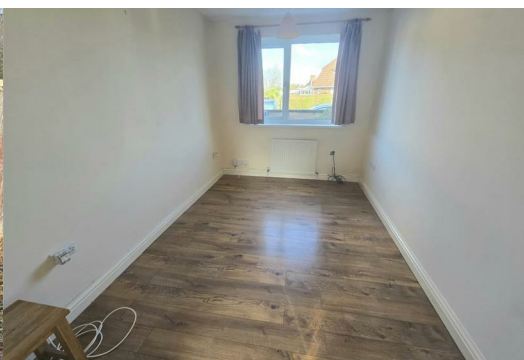
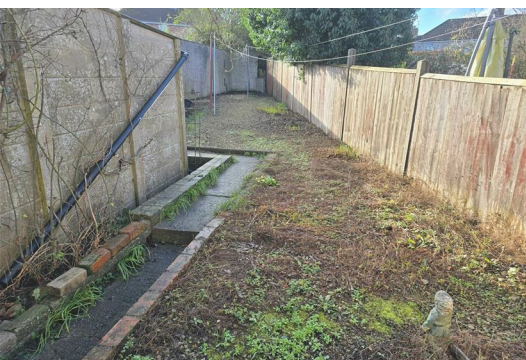
128 Woodland Way

, Kingswood, BS15 1QD

£895



PLEASE READ DO NOT PHONE If you are interested in viewing this property please send us an alert through Rightmove / Zoopla using the Email Agent/request details option on their site. We will then respond with a brief questionnaire. On receipt, we will then contact you. Available Straight Away, Owner Is Ideally Looking For A Single Applicant Tenancy, With Accommodation Comprising Entrance Hall, Lounge Area Kitchen Area, Bedroom And Bathroom, Benefits From A Gas Central Heating System And Double Glazing, Garage Parking And Garden.



Hallway

Double glazed door leading to entrance hallway, radiator, tiled flooring.

Lounge Area 8'2" x 11'10" (2.50m x 3.62m)

Double glazed window overlooking the front, radiator, power points, laminated flooring, opening to:

Kitchen 7'0" x 6'8" (2.15m x 2.05m)

Double glazed window overlooking the rear garden, selection of wall and base units with work surfaces over, four ring gas hob, oven and extractor hood, space for a washing machine, fridge freezer, wall mounted boiler which supplies the gas central heating system and domestic hot water.

Bedroom 1 11'11" x 6'11" (3.64m x 2.12m)

Double glazed window overlooking the front, radiator, power points.

Bathroom

Obscure double glazed window, bath with shower attachment, shower screen, wash hand basin, WC, radiator, tiled flooring.

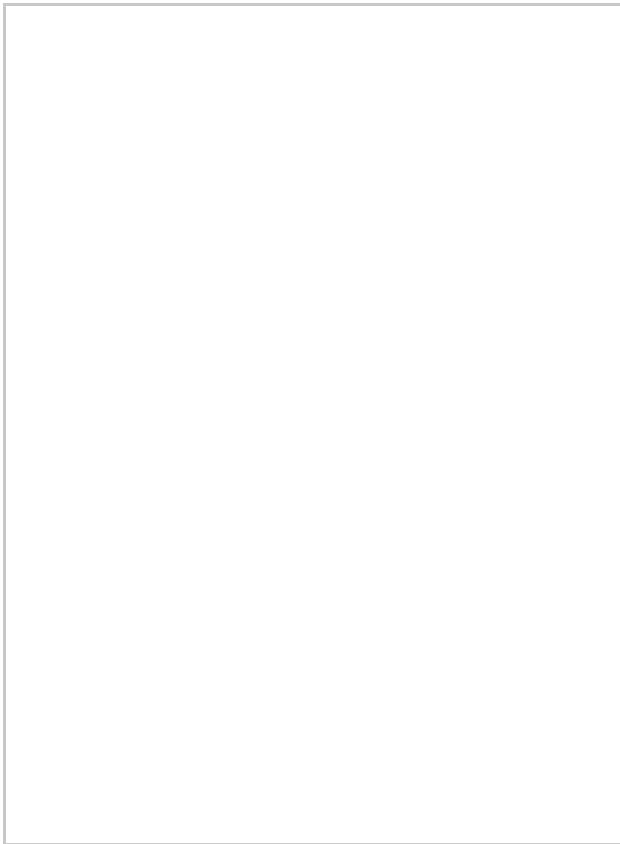
Garage and Parking

Garden

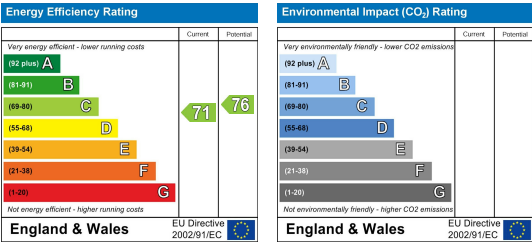
Area Map



Floor Plans



Energy Efficiency Graph



These particulars, whilst believed to be accurate are set out as a general outline only for guidance and do not constitute any part of an offer or contract. Intending purchasers should not rely on them as statements of representation of fact, but must satisfy themselves by inspection or otherwise as to their accuracy. No person in this firms employment has the authority to make or give any representation or warranty in respect of the property.