



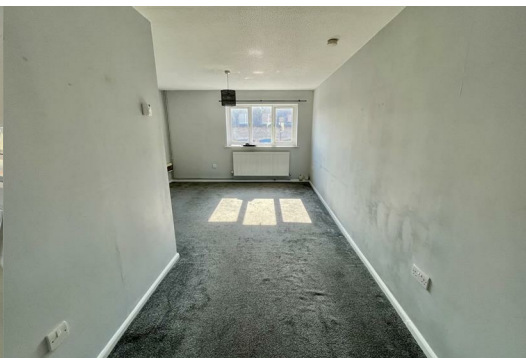
16 Wentworth

Warmley, Bristol, BS30 8GN

£155,000



NO MANAGEMENT FEE PAYABLE AND SOLD WITH NO CHAIN Property Comprising of Communal Hallway, Lounge, Dining Area, Kitchen, Bedroom, Bathroom. Also Benefits from Gas Central Heating System, Double Glazing, Off Street Parking, No Management Fee Charged



Communal Hallway

Lounge 11'9" x 11'1" (3.59m x 3.40m)

Dining Area 6'5" x 6'6" (1.98m x 1.99m)

Kitchen 9'10" x 6'6" (3.00m x 1.99m)

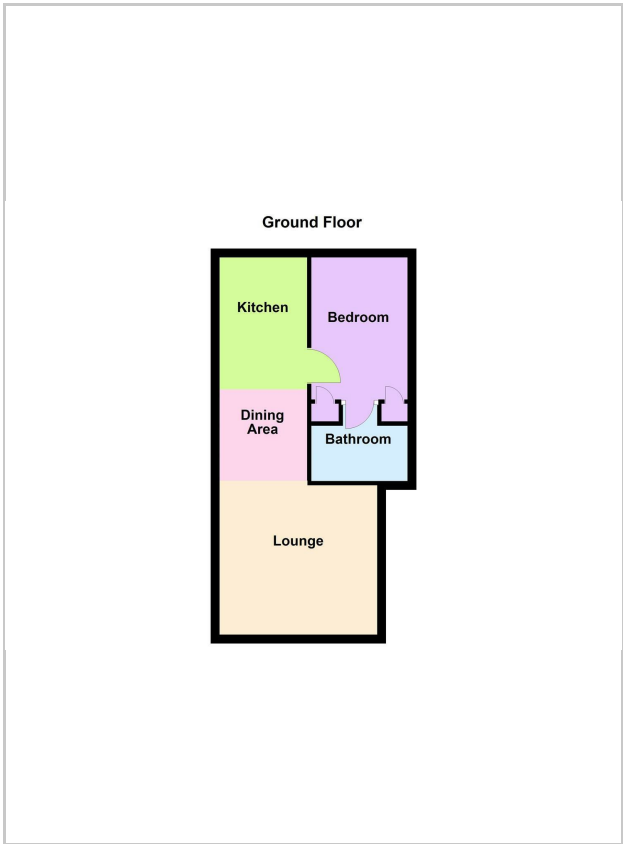
Bedroom 9'8" x 6'11" (2.97m x 2.12m)

En-suite Bathroom 6'10" x 4'5" (2.10m x 1.35m)

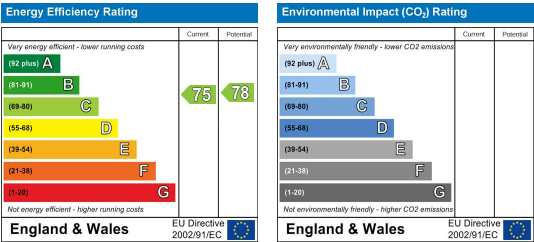
Area Map



Floor Plans



Energy Efficiency Graph



These particulars, whilst believed to be accurate are set out as a general outline only for guidance and do not constitute any part of an offer or contract. Intending purchasers should not rely on them as statements of representation of fact, but must satisfy themselves by inspection or otherwise as to their accuracy. No person in this firms employment has the authority to make or give any representation or warranty in respect of the property.