



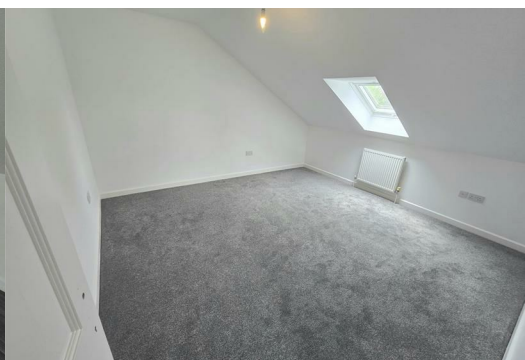
## 19a London Road

Warmley, Bristol, BS30 5JB

**£1,200 (From) Per Calendar Month**



PLEASE READ DO NOT PHONE If you are interested in viewing this property please send us an alert through Rightmove / Zoopla using the Email Agent/request details option on their site. We will then respond with a brief questionnaire. On receipt, we will then contact you. Suitable For Working Professionals, Delighted To Offer To Rent We Have This Lovely Two Bedroom First Floor Apartment Set In Communal Grounds And Electric Gates For Access, Accommodation Comprising Lounge, Kitchen Two Bedrooms And Bathroom, Benefits From A Gas Central Heating System And Double Glazing, So Sorry No Smokers No Flat Share. Available Straight Away.





**Lounge 15'0" x 14'7" (4.58m x 4.47m )**

Double glazed obscure door leading to the lounge, radiator, power points, Velux window.

**Kitchen 7'8" 9'10" (2.34 3.02m )**

Double glazed window overlooking the fornt, one and a half bowl single drainer stainless steel sink unit, tiled splash backs, selection of wall and base units with work surfaces over, four ring electric hob, oven and extractor hood, wall mounted Worcester boiler which supplies the gas central heating system and domestic hot water, washing machine and space for fridge freezer.

**Bedroom 1 12'8" x 13'5" (3.88m x 4.11m )**

Velux window, radiator, power points.

**Bedroom 2 9'8" x 9'11" (2.96m x 3.03m )**

Velux window, radiator, power points.

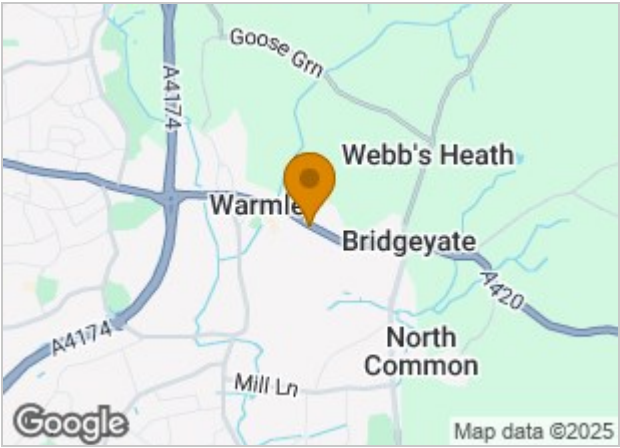
**Bathroom 7'10" x 6'9" (2.41m x 2.08m )**

Velux window, wash hand basin, WC, bath with shower screen and shower over, towel rail radiator.

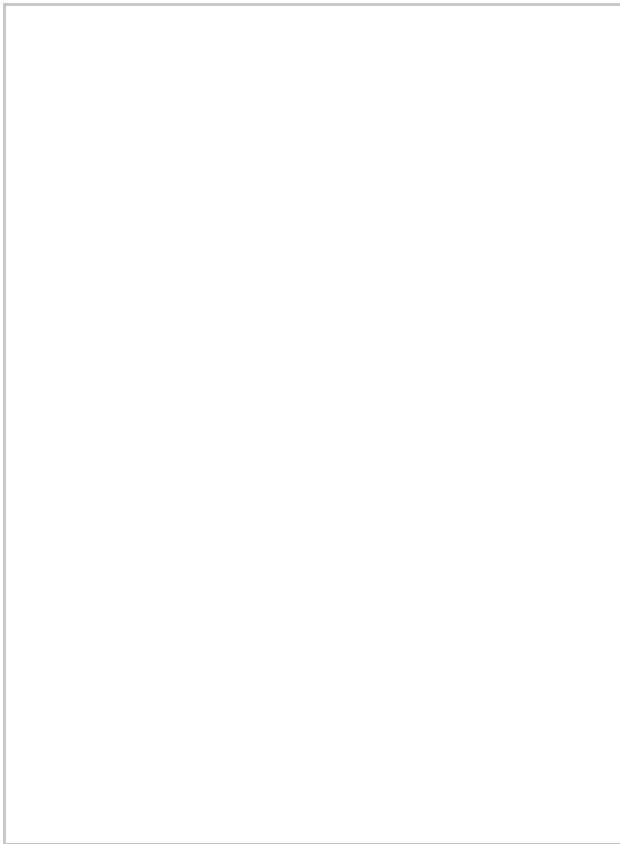
**Communal Gardens**

**Off street parking for one car**

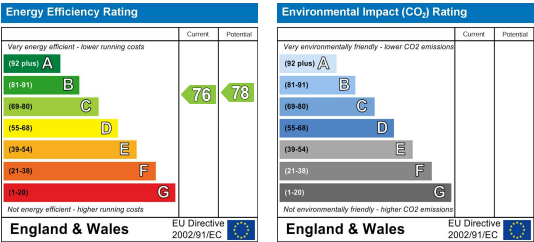
**Area Map**



**Floor Plans**



**Energy Efficiency Graph**



These particulars, whilst believed to be accurate are set out as a general outline only for guidance and do not constitute any part of an offer or contract. Intending purchasers should not rely on them as statements of representation of fact, but must satisfy themselves by inspection or otherwise as to their accuracy. No person in this firms employment has the authority to make or give any representation or warranty in respect of the property.