



South West Wing Siston Court

, Mangotsfield, BS16 9LU

£900 Per Calendar Month



PLEASE READ DO NOT PHONE If you are interested in viewing this property please send us an alert through Rightmove / Zoopla using the Email Agent/request details option on their site. We will then respond with a brief questionnaire. On receipt, we will then contact you. All Utility Bills Included, Ideal For Single Occupancy, Studio Apartment, Situated in Siston Court Which Is A Grade 1 Listed Located Within the Village of Siston. Accommodation Comprises Communal Entrance Hallway, Kitchen Area Studio Area And Shower Room, South Facing Private Terrace With Far Reaching Views. Parking Space.



Communal Entrance

Communal entrance door leading to the communal hallway, further door leading to the:

Kitchen Area 5'1" x 12'2" (1.56m x 3.73m)

Window, one and a half bowl single drainer sink unit with tiled splash backs, electric cooker, washing machine and fridge, tiled flooring, radiator. Inner hallway leading to the:

Studio Area 9'8" x 13'5" (2.96m x 4.11m)

Studio area, radiator, part paneled walls, double doors leading to porch area then further doors leading to your courtyard.

Shower Room

Window, WC, wash hand basin, shower tray, tiled splash backs.

Parking

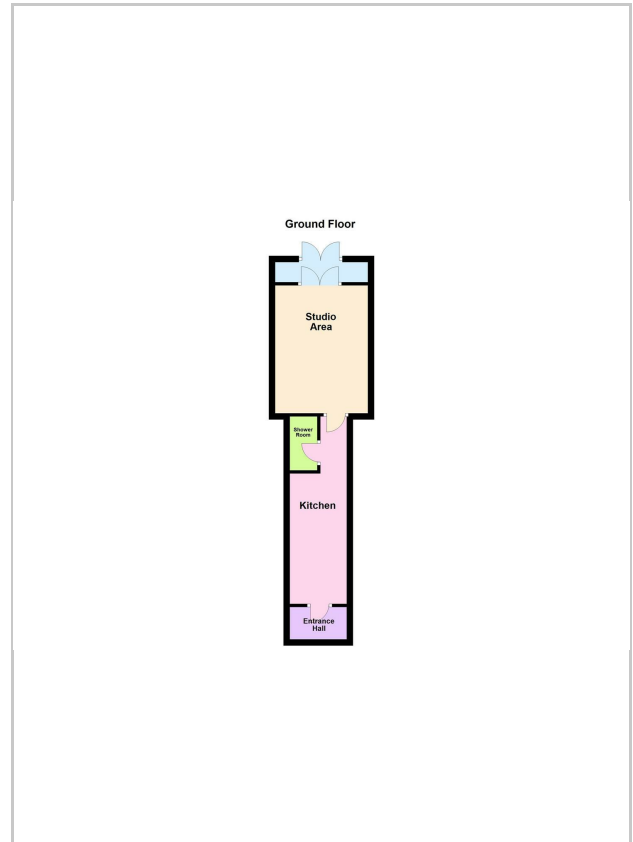
Parking for one car.

Courtyard Area

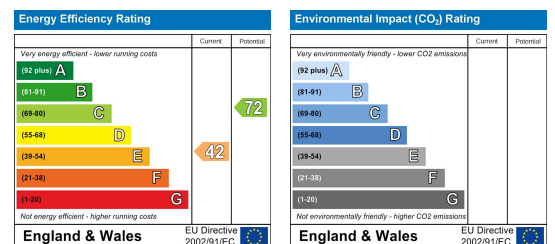
Area Map



Floor Plans



Energy Efficiency Graph



These particulars, whilst believed to be accurate are set out as a general outline only for guidance and do not constitute any part of an offer or contract. Intending purchasers should not rely on them as statements of representation of fact, but must satisfy themselves by inspection or otherwise as to their accuracy. No person in this firm's employment has the authority to make or give any representation or warranty in respect of the property.

31 High Street, Kingswood, Bristol, BS15 4AA

Tel: 0117 967 9102 Email: oakestateagents@googlemail.com <https://www.estateagentskingswood.co.uk>