



Bryce Road, Brierley Hill DY5 4ND

welcome to

Bryce Road, Brierley Hill

Must see to appreciate! Call now to arrange your viewing!

A two bedroom semi-detached property located in Brierley Hill, being close to local transport links, amenities, schools, parks and a short travel to Merry Hill shopping centre.

Lounge

13' 2" x 13' (4.01m x 3.96m)

Double glazed window to front and central heating radiator.

Kitchen

14' 7" x 12' 10" (4.45m x 3.91m)

Double glazed window to rear, wall and base level units, sink, storage, space for washing machine, dryer and fridge/freezer, boiler and door to rear.

Downstairs W.C

5' 11" x 3' (1.80m x 0.91m)

Having obscure window to rear, wash hand basin, WC and central heating radiator.

Landing

Double glazed window to side and loft access.

Bedroom One

16' 7" x 9' 8" (5.05m x 2.95m)

Two double glazed windows to front and central heating radiator.

Bedroom Two

10' 2" x 9' 4" (3.10m x 2.84m)

Double glazed window to rear and central heating radiator.

Bathroom

Having obscure window to rear, bath with shower over, wash hand basin, WC and central heating radiator.

Front

Having steps to front door, lawn area.

Rear Garden

Having patio area, lawn area and raised flowerbeds.

Agents Notes

Council Tax Band: A





check out more properties at shipways.co.uk



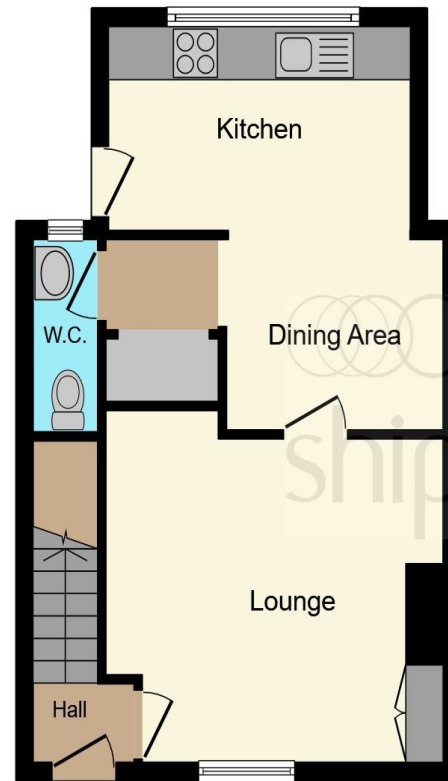
welcome to

Bryce Road, Brierley Hill

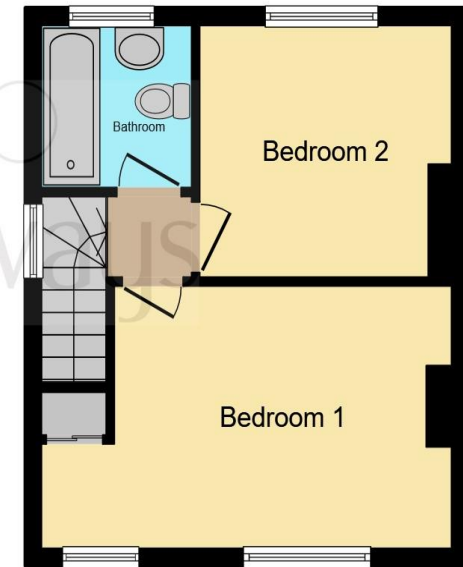
- SEMI-DETACHED
- TWO BEDROOMS
- LOUNGE
- WC
- KITCHEN

Tenure: Freehold EPC Rating: D

£175,000



Ground Floor



First Floor

This floorplan is for illustrative purposes only and is not drawn to scale. Measurements, floor-areas, openings and orientations are approximate. They should not be relied upon for any purpose and do not form any part of an agreement. No liability is taken for any error or mis-statement. All parties must rely on their own inspections.

check out more properties at shipways.co.uk



Property Ref:
DLY104655 - 0007

1. MONEY LAUNDERING REGULATIONS Intending purchasers will be asked to produce identification documentation at a later stage and we would ask for your co-operation in order that there is no delay in agreeing the sale. 2. These particulars do not constitute part or all of an offer or contract. 3. The measurements indicated are supplied for guidance only and as such must be considered incorrect. Potential buyers are advised to recheck measurements before committing to any expense. 4. We have not tested any apparatus, equipment, fixtures or services and it is in the buyers interest to check the working condition of any appliances. 5. Where an EPC, or a Home Report (Scotland only) is held for this property, it is available for inspection at the branch by appointment. If you require a printed version of a Home Report, you will need to pay a reasonable production charge reflecting printing and other costs. 6. We are not able to offer an opinion either written or verbal on the content of these reports and this must be obtained from your legal representative. 7. Whilst we take care in preparing these reports, a buyer should ensure that his/her legal representative confirms as soon as possible all matters relating to title including the extent and boundaries of the property and other important matters before exchange of contracts.

Shipways is a trading name of Sequence (UK) Limited which is registered in England and Wales under company number 4268443, Registered Office is Cumbria House, 16-20 Hockliffe Street, Leighton Buzzard, Bedfordshire, LU7 1GN. VAT Registration Number is 500 2481 05.



01384 238779



dudley@shipways.co.uk



216 High Street, DUDLEY, West Midlands, DY1 1PB



shipways.co.uk