

MoveNow Properties



WAKEFIELD OFFICE:

Address: 10 Rishworth Street, Wakefield, WF1 3BY

Web: www.movenowproperties.com

Tel: 01924 249349

Email: info@movenowproperties.com

BARNSELY OFFICE:

Address: 41A Towngate, Mapplewell, S75 6AS

Web: www.movenowproperties.com

Tel: 01226 593477

Email: mapplewell@movenowproperties.com

FOR SALE

Parkside, Middlestown,

WF4 4UA

4 Bedroom, Detached

Guide Price £375,000



Guide Price £375,000 - £385,000. Movenowproperties proudly presents this 4-bedroom detached family home, nestled in a serene cul-de-sac, offering the perfect blend of tranquillity and convenience. Beautifully renovated interior, boasting a new kitchen and bathroom that exude contemporary elegance.

- Luxurious 4-bedroom detached property offering ample space and privacy for modern living.
- Enjoy the luxury of two reception rooms, providing versatility for entertaining guests or relaxing with family.
 - Indulge in comfort with a family bathroom and a master bedroom featuring an en-suite, offering convenience and style.
- Embrace outdoor living in the spacious enclosed rear garden, perfect for gatherings or quiet relaxation.
- The garage, complete with power and lighting, offers practical storage solutions for your convenience.
- Park with ease with the drive providing off-road parking for 2 cars, ensuring convenience and accessibility.
 - Discover endless possibilities with the fully insulated garden room, offering versatile office space or a tranquil retreat.
- Rest easy with the full alarm system, providing peace of mind and security for you and your loved ones.
- Experience the luxury of a new kitchen and bathroom, blending modern design with functionality for everyday living.
- Conveniently located close to local amenities, enjoy easy access to shopping, dining, and recreation.
- Revel in breathtaking field views to the rear, offering a serene backdrop for your everyday life.

Guide Price £375,000 - £385,000

Accommodation Comprises:

Entrance Hall

Upon entry, be welcomed by a spacious hall adorned with a UPVC door, boasting gleaming wooden flooring and a conveniently located storage cupboard beneath the stairs.

Living Room

Measurements 16' 1" x 12' 0" (4.89m x 3.67m)

Entertain in style in the expansive living room, where a featured fireplace with a gas fire sets the ambiance for cosy gatherings. A large double glazed window floods the room with natural light, while a central heating radiator ensures comfort and warmth throughout.



Dining Room

Measurements 11' 5" x 8' 8" (3.48m x 2.64m)

Adjacent to the living room, the dining room offers a perfect setting for intimate dinners or lively gatherings. With wooden flooring underfoot and patio doors leading to the rear garden, this space seamlessly blends indoor and outdoor living, creating a perfect atmosphere for entertaining.



Kitchen

Measurements 10' 8" x 8' 4" (3.24m x 2.55m)

Prepare culinary delights in the sleek and modern kitchen, equipped appliances including a integrated fridge/freezer, dishwasher and washing machine, oven, gas hob and extractor. With ample storage in the base and wall units complimented by solid oak work surfaces and large double glazed window overlooking the front, the kitchen is both functional and stylish.



Downstairs WC

Measurements 5' 7" x 2' 11" (1.71m x 0.88m)

Convenience meets elegance in the WC, featuring wooden-style flooring, a frosted double glazed window, and a central heating radiator for added comfort.



Stairs & Landing

Ascend the stairs leading from the entrance hall to the spacious landing with carpet flooring and double glazed window overlooking the side.

Bedroom 1

Measurements 13' 4" x 11' 1" (4.06m x 3.83m)

The master bedroom exudes luxury, featuring a double glazed window offering views of the front, carpet flooring, radiator and door to en suite.



En-Suite

Measurements 8' 11" x 11' 1" (4.06m x 3.83m)

An en-suite shower room adorned with pristine white tiles, pedestal wash basin, a shower unit and toilet.



Bedroom 2

Measurements 10' 11" x 10' 8" (3.34m x 3.25m)

Bedroom 2 boasts double glazing, a central heating radiator, and carpet flooring, offering a peaceful sanctuary for relaxation.



Bedroom 3

Measurements 9' 10" x 9' 9" (2.99m x 2.97m)

A cosy retreat, complete with double glazed window and central heating radiators, ensuring comfort and serenity.



Bedroom 4

Measurements 9' 9" x 7' 2" (2.97m x 2.18m)

A good size fourth bedroom with radiator and double glazed window.



Family Bathroom

Measurements 8' 6" x 6' 2" (2.58m x 1.89m)

Indulge in self-care in the new and stylish bathroom, boasting a 4-piece suite with black accessories, partially tiled walls, tiled flooring, a frosted double glazed window and central heating radiator, creating a spa-like atmosphere for relaxation.



Outside

The property offers a haven of relaxation and entertainment, with a spacious drive, garage, and rear garden providing ample space for outdoor activities and gatherings.

Additionally, the fully insulated garden room offers versatile office space, allowing you to work from home in style and comfort.



Garage

The spacious single garage offers ample storage space and comes equipped with power, providing versatility and convenience for any homeowner.

Located in the desirable village of Middlestown and very close to a great Junior/Infant school, This well positioned 4 bedroom property is tucked away in this small cul-de-sac

having access benefiting from local amenities such as shops and restaurants. As you walk out of the front door, within just a few minutes walk, you find yourself walking amongst the beautiful Yorkshire countryside, which if you continue walking along the paths, will lead you to the Yorkshire Sculpture Park.

Tenure

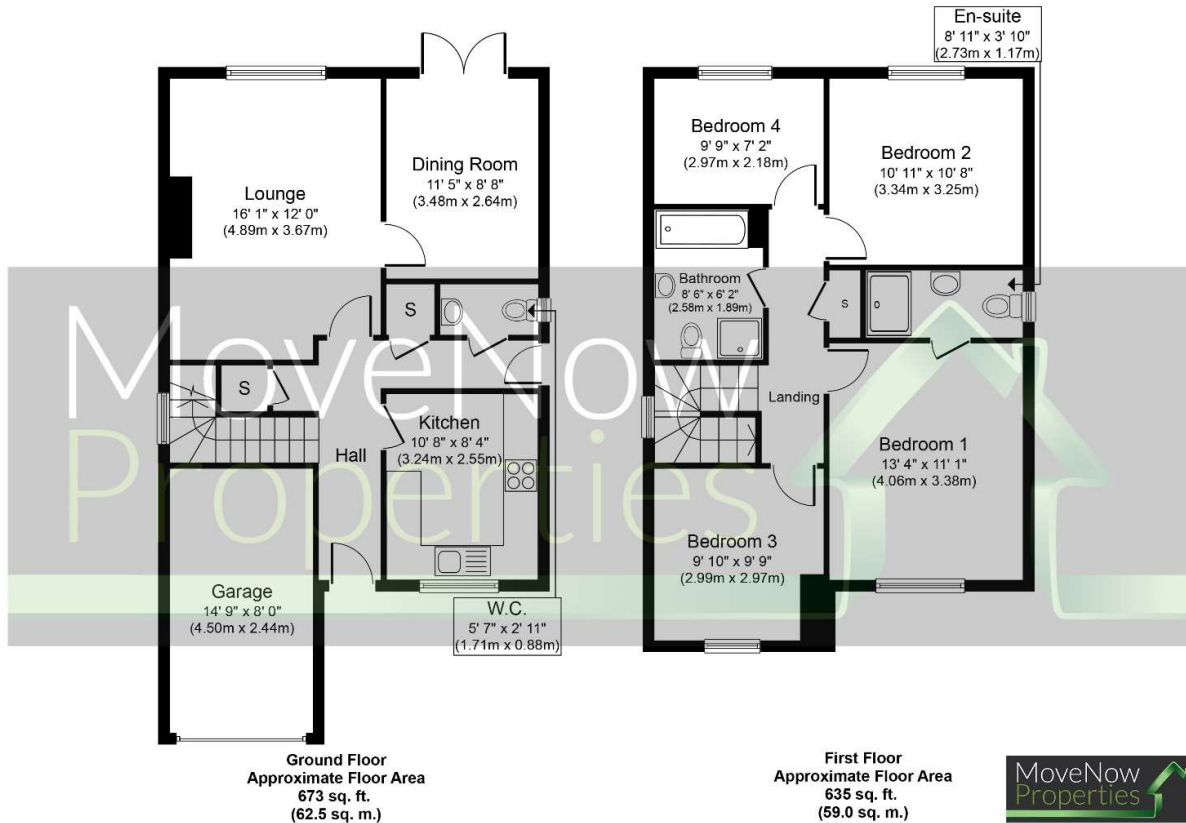
Freehold

Additional Information

EPC

Floor plans

These floor plans are intended as a rough guide only and are not to be intended as an exact representation and should not be scaled. We cannot confirm the accuracy of the measurements or details of these floor plans.



Whilst every attempt has been made to ensure the accuracy of the floor plan contained here, measurements of doors, windows, rooms and any other items are approximate and no responsibility is taken for any error, omission, or mis-statement. The measurements should not be relied upon for valuation, transaction and/or funding purposes. This plan is for illustrative purposes only and should be used as such by any prospective purchaser or tenant. The services, systems and appliances shown have not been tested and no guarantee as to their operability or efficiency can be given.

Copyright V360 Ltd 2024 | www.houseviz.com

Viewings

For further information or to arrange a viewing please contact our offices directly.

Free valuations

Considering selling or letting your property?

For a free valuation on your property please do not hesitate to contact us.

DISCLAIMER:

The details shown on this website are a general outline for the guidance of intending purchasers, and do not constitute, nor constitute part of, an offer or contract or sales particulars. All descriptions, dimensions, references to condition and other details are given in good faith and are believed to be correct but any intending purchasers should not rely on them as statements or representations of fact but must satisfy themselves by inspection, searches, survey, enquiries or otherwise as to their correctness. We have not been able to test any of the building service installations and recommend that prospective purchasers arrange for a qualified person to check them before entering into any commitment. Further, any reference to, or use of any part of the properties is not a statement that any necessary planning, building regulations or other consent has been obtained. All photographs shown are indicative and cannot be guaranteed to represent the complete interior scheme or items included in the sale. No person in our employment has any authority to make or give any representation or warranty whatsoever in relation to this property.