



12 NEWTON ROAD, STRATHAVEN, ML10 6BQ

OFFERS OVER £139,995

THREE BEDROOM MID-TERRACED HOME

THE PROPERTY

3 | BEDROOMS 1 | BATHROOM

1 | PUBLIC ROOM

Stunning mid-terraced family home.

12 Newton Road, Strathaven is an immaculate and beautifully presented mid-terraced home set within a popular and well-established residential area of the town.

The property offers a welcoming entrance hallway that leads into a relaxing living room, filled with natural light and providing the perfect space for family life or entertaining. The living room flows seamlessly into the kitchen, which is fitted with excellent storage options, including a large walk-in cupboard.

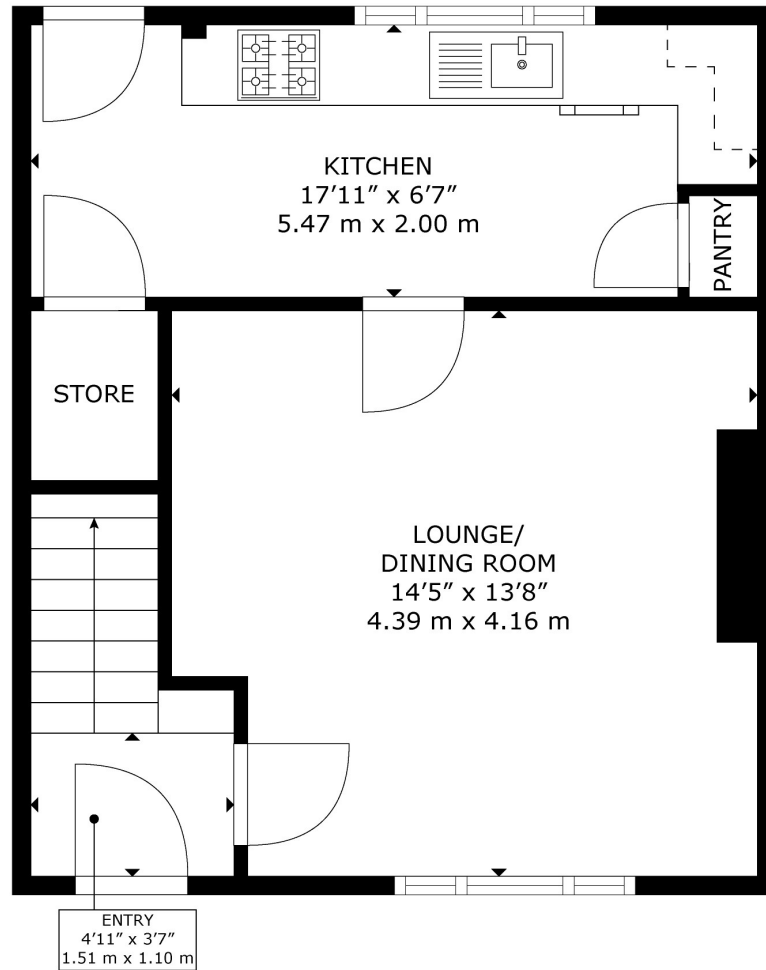
Upstairs, the home boasts three generously proportioned double bedrooms, one of which benefits from built-in storage, while a contemporary family bathroom completes the accommodation, featuring a three-piece suite with shower over the bath.

Externally, the property enjoys a substantial private garden to the rear, landscaped with a patio area and steps leading to a large lawn, ideal for outdoor dining and relaxation. The garden is notably private with no overlooking neighbours, creating a peaceful setting. On-street parking is conveniently available to the front, making this an excellent choice for families, first-time buyers, or those looking to settle within Strathaven's desirable community.

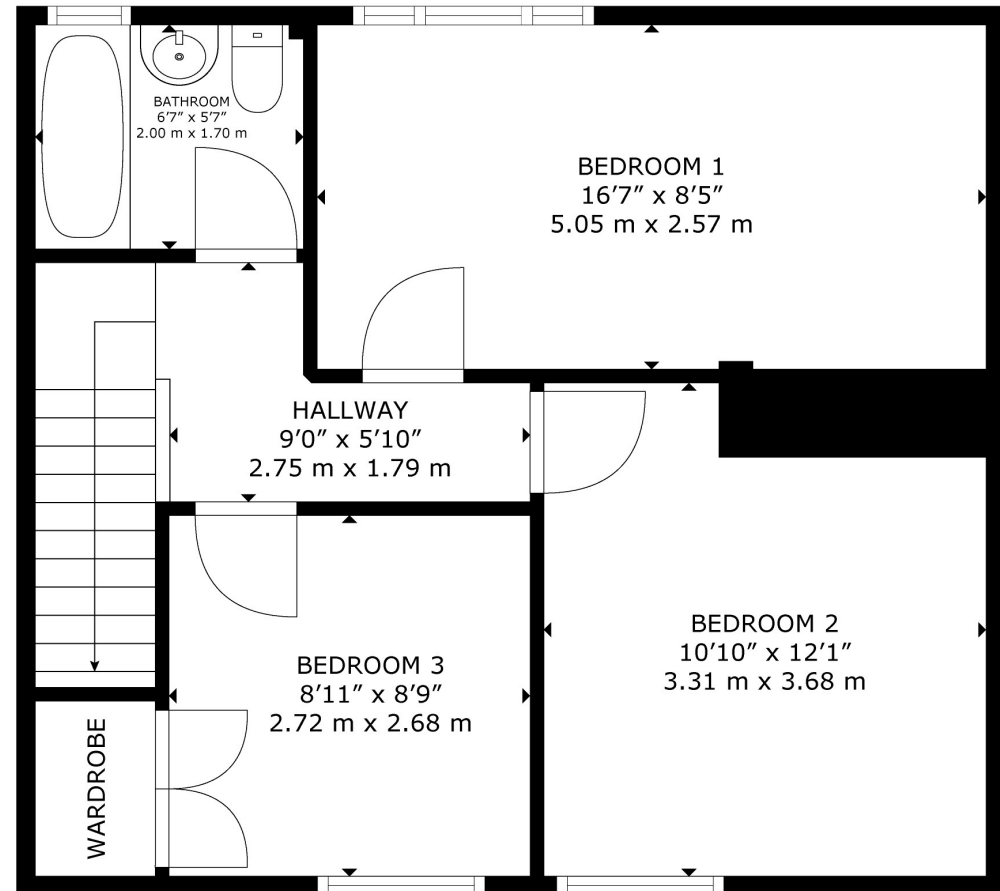
EPC = C



FLOORPLAN



GROUND FLOOR



FIRST FLOOR

GROSS INTERNAL AREA
GROUND FLOOR: 377 sq. ft , 35 m2, FIRST FLOOR: 495 sq. ft , 46 m2,
TOTAL AREA : 872 sq. ft , 81 m2
SIZES AND DIMENSIONS ARE APPROXIMATE, ACTUAL MAY VARY.

Produced by Plushplans







THE FEATURES

Mid-terraced family home
Immaculately presented
Two floors
Three bedrooms
Central Strathaven location

TRAVEL DIRECTIONS

SAT NAV: 12 Newton Road, Strathaven, ML10 6BQ

***Please call us on: 01357 520082 or email property@gebbiewilson.co.uk,
if you would like further details or wish to view the property.***

***We would also be delighted to offer you a free non-obligatory marketing
appraisal of your property.***

Disclaimer: Whilst we endeavour to make these particulars as accurate as possible, they do not form part of any contract of offer, nor are they guaranteed. Measurements are approximate and in most cases are taken with a digital/ sonic-measuring device and are taken to the widest point. We have not tested the electricity, gas or water services or any appliances. Photographs are reproduced for general information and it must not be inferred that any item is included for sale with the property. If there is any part of this that you find misleading or simply wish clarification on any point, please contact our office immediately when we will endeavour to assist you in any way possible.

