



above Stoney Way, Matlock, DE4 3BW

This captivating cottage is one of the most beautiful homes we've ever marketed. With colourful well-stocked front gardens and a dramatic cliff-face behind, the home is situated on the edge of a large park with babbling brooks and cute bridges. It's an idyllic setting less than a flat five minute walk into the town centre and there is on-street parking immediately beside the home. It's hard to imagine a more convenient location.

On the ground floor is a pretty and cosy sitting room, dining room and kitchen. On the first floor are two bedrooms and a simply magnificent bathroom. The front garden has been lovingly developed and is packed with flowers, bushes, trees and two separate patio areas. To the rear, the south-facing courtyard garden has a breathtaking cliff face rising above.

Matlock is one of the most famous towns in the area, nestled on the border of the Derbyshire Dales and the Peak District. It has a thriving town centre (a recent report noted it was in the top 5 towns in the UK for increased footfall since the pandemic) and natural attractions aplenty all around. Chatsworth House, Peak Rail, The High Peak Trail and the similarly bustling market towns of Bakewell and Buxton are close by.

- Picture book cottage constructed in 1800
- Quality fixtures and fittings throughout
- Short walk to town
- Smeg and Bosch kitchen appliances
- Stunning front garden
- Beautifully-presented
- South-facing courtyard garden
- Dramatic cliff-face backdrop
- Located on edge of large park with streams
- Council Tax Band C

£325,000

above Stoney Way, , Matlock, DE4 3BW

Front of the home

Quite possibly the most picturesque entrance to a home that we've had the pleasure to represent, an ornate iron gate is set within the curving dry stone boundary wall. The gate opens to reveal a picture book garden, with a path wending through and up to two steps onto a raised dining patio. It's a lovely spot from which to enjoy the views and birdsong in the garden and the adjacent park. An impressive timber porch stands over the eye-catching yellow composite part-glazed front door.

Sitting Room

12'11" x 11'11" (3.95 x 3.65)

This elegant dual aspect room has deep-set north and south facing windows, with natural light pouring into the room. The focal point is the large stone fireplace which houses a log burner and flue, set upon a tiled hearth. The exposed stone wall has tall alcoves each side of the fireplace. The room is carpeted and has a radiator, ceiling light fitting and plenty of room for sofas and furniture. A beveled pine door leads through to the dining room and kitchen.

Throughout the home, all carpets, curtains and blinds are included in the sale.

Dining Room

11'11" x 8'6" (3.65 x 2.6)

This cute carpeted room has an impressive stone inglenook fireplace with exposed oak beam and tiled hearth. There is plenty of space for a six seater dining table. The room has a north facing window, radiator, ceiling light fitting and open entrance through to the kitchen, with light coming through from there too. An open staircase leads up to the first floor.

Kitchen

15'7" x 4'7" (4.75 x 1.4)

The well-designed kitchen has a tiled floor, recessed spotlights and a glazed uPVC door out to the rear courtyard garden. A long L-shaped worktop provides plenty of room for food preparation and small appliances. From the back door and moving right, there are a range of high and low level cabinets. Beneath the wide north-facing window which looks out to the rear garden and cliff is a modern 1.5 sink and drainer with chrome mixer tap. Beneath the worktop is space and plumbing for a washing machine.

Further along is an integrated Bosch four-ring gas hob with extractor fan above and then we love the futuristic Smeg chest-height oven. Glass-fronted display cabinets, a built-in wine rack and more cabinets provide ample storage. The kitchen also has a small frosted double glazed window, space for a refrigerator/fridge-freezer, radiator and exposed oak beam.

The washing machine, dishwasher and refrigerator are included in the sale.

Stairs to first floor landing

Solid wooden stairs lead up from the dining room. At the landing, a ceiling light fitting and loft hatch are overhead. Matching beveled pine doors with brass handles lead into the two bedrooms and bathroom.

Bedroom One

12'5" x 11'9" (3.8 x 3.6)

This spacious double bedroom has bespoke fitted wardrobes on the left wall and therefore plenty of room for a bed and furniture. It has fantastic views of the front garden and park, so the window seat is positioned perfectly to take in that vista. The room has a radiator and ceiling light fitting and we love the delicate light switches too!

Bedroom Two

8'9" x 8'6" (2.67 x 2.6)

Another room with stunning leafy views, this carpeted bedroom has space for a double bed. It is currently used as a spacious single bedroom and has a ceiling light fitting. This room could easily be used as a home office if you can tear yourself away from the views to do some work!



Bathroom

15'3" x 4'9" (4.65m x 1.45m)

In a home which is packed with character and surrounded by such beautiful gardens, the bathroom may yet be the best feature. It's a wonderful, unique bathroom as evidenced by the photographs. The huge rolltop bath with claw feet has taps conveniently positioned in the middle, so that you can truly stretch out. The bath has a heritage-style mixer tap and separate hand-held shower attachment.

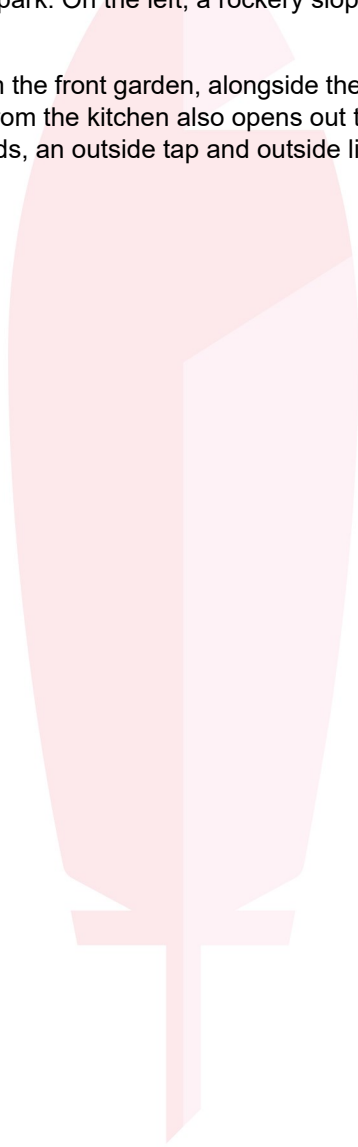
The sink, bidet and WC are from The Imperial Bathroom Company and are white ceramic with matching blue hand-painted flowers. The sink and bidet have chrome mixer taps and the WC has a cistern. The room also includes a chrome and white radiator with towel heater and a wall-mounted towel store above. There are east and west facing frosted windows, a ceiling light fitting, recessed ceiling spotlights, an extractor fan and the room is carpeted.

Front Garden

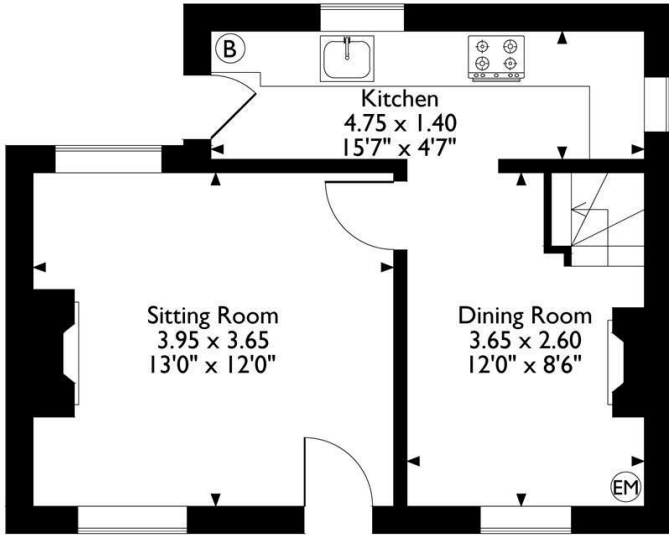
Dazzlingly pretty, a path from the front gate dissects the two lawns, each of which are bordered by colourful, packed flower beds. The left lawn has a balsam fir tree, whilst a large tall holly tree occupies pride of place in the right hand lawn. We love the sheltered and peaceful dining patio which is immediately in front of the cottage. A path from here leads to the side garden, where there is a shed/workshop with power and lighting and a secluded second seating area and a graveled garden area. A slatted wooden gate provides direct access out onto the park. On the left, a rockery slopes upwards towards the sheer, caged cliff face.

Rear Garden

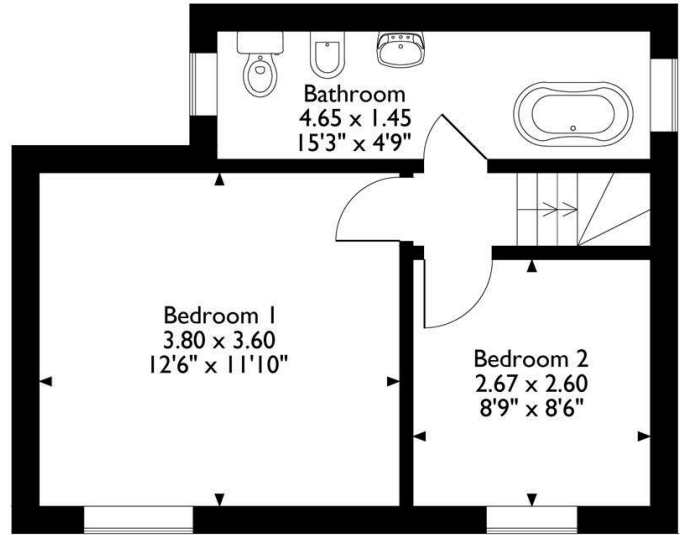
A path round the right-side of the home leads from the front garden, alongside the vertiginous cliff face and around to the private, secluded south facing courtyard garden. A door from the kitchen also opens out to here. There is a patio with room for a dining set in this sun trap garden. There are more flower beds, an outside tap and outside light. It's a pleasant and sheltered space perfect for a spot of lunch or evening drinks.



Fern Cottage Approximate Gross Internal Area 64 Sq M / 689 Sq Ft



Ground Floor



First Floor

Please note that the location of doors, windows and other items are approximate and this floorplan is to be used for illustrative purposes only. Unauthorized reproduction is prohibited.



Energy Efficiency Rating		
	Current	Potential
Very energy efficient - lower running costs		
(92 plus) A		
(81-91) B		
(69-80) C		
(55-68) D		
(39-54) E		
(21-38) F		
(1-20) G		
Not energy efficient - higher running costs		
England & Wales	EU Directive 2002/91/EC	

Environmental Impact (CO ₂) Rating		
	Current	Potential
Very environmentally friendly - lower CO ₂ emissions		
(92 plus) A		
(81-91) B		
(69-80) C		
(55-68) D		
(39-54) E		
(21-38) F		
(1-20) G		
Not environmentally friendly - higher CO ₂ emissions		
England & Wales	EU Directive 2002/91/EC	

10 MARKET PLACE, WIRKSWORTH, DERBYSHIRE, DE4 4ET
TELEPHONE: 0330 122 9960 + 07704 575743

REGISTERED ADDRESS: SUNNYSIDE COTTAGE, MAIN STREET, KIRK IRETON, DERBYSHIRE, DE6 3JP
REGISTERED IN ENGLAND. COMPANY NUMBER: 11836315