



Aston Lane, Oker, DE4 2JP

This elegant cottage in an idyllic setting has been completely renovated to an exceptional standard. We may run out of superlatives to describe the beauty of the location and the scale of the improvements.

Located on the Derwent Valley Heritage Way in the beautiful hamlet of Oker on a very quiet country lane, close to Matlock, this detached three bedroom cottage has a spacious and well-designed south-facing garden, with lawn, dining patio areas and is packed with lovingly tended flower beds.

On the ground floor, an entrance porch has a useful utility-WC room on the left. To the right, the spacious sitting room leads through to the kitchen diner and a more formal dining room on the right. Stairs from here lead up to the three bedrooms (one en-suite) and family bathroom.

The renovation has included a complete rewire including the installation of a Nest heating system, re-plumbing, new joinery throughout, new bathrooms and a new kitchen, Karndean flooring on the ground floor and new carpets upstairs.

Oker is located just a five minute drive into Matlock, with a wide range of shops, parks, riverside walks and tourist attractions. To the north are the pretty villages of Winstar and Wensley, with the Peak District stretching beyond this. It's paradise for walkers and cyclists, with beautiful countryside routes in all directions.

- Detached stone cottage in an idyllic location
- Completely renovated to a high standard
- Fully rewired and re-plumbed - new central heating
- Stylish decor throughout
- New kitchen and bathrooms
- Karndean flooring and new carpets
- Off-road parking for two vehicles
- South-facing garden with valley views

£475,000

Aston Lane, , Oker, DE4 2JP

Front of the home

From the off-road parking area, step down to the garden and along the short path to the front door. To your left is the splendid garden and magnificent views and we'll return to those shortly. An outside light is to the right of the front door. Enter the newly-rendered entrance porch through the part-glazed composite front door with letterbox.

Entrance Porch

With a newly-rendered exterior and new roof, this is a lovely entrance to the home. All of the ground floor has Karndean flooring and this begins here. There is a west-facing window, recessed ceiling spotlight, radiator and room to hang coats and kick off boots after a local countryside walk. Matching white oak core doors lead through to the sitting room and the utility-WC.

Utility-WC

8'0" x 3'1" (2.45 x 0.95)

The Karndean flooring flows through to this room, which has two south-facing windows and a ceiling light fitting. There is space and plumbing on the left for a washing machine. The substantial ceramic 'floating' sink has a chrome mixer tap and tiled splashbacks. There is a ceramic WC with integrated flush, chrome vertical heated towel rail and extractor fan.

Sitting Room

14'3" x 12'11" (4.35 x 3.95)

Exuding elegance and style, the sitting room has light pouring in through the tall south-facing window. The chimney and wall have been rebuilt and plastered, creating a new chimney - within which a new wood burner and flue is positioned upon a tiled hearth. The high ceiling has a ceiling light fitting - and wall lights and the light decor complement the natural light coming into the room. There is an alcove to the left of the chimney with built-in shelving and the room has a radiator and plenty of space for flexible furniture layouts.

Dining Kitchen

12'11" x 10'5" (3.95 x 3.2)

Set across two levels, as you enter from the sitting room you alight upon the raised dining area which has space for a six-seater dining table. This area has a radiator and one step down to the main kitchen. On the left is a full-height double cupboard incorporating an integrated fridge-freezer. On the right is an L-shaped white worktop which contrasts perfectly with the Oxford Blue cabinets. The Rangemaster Professional oven and four ring hob has an extractor fan above. There is also a Rangemaster integrated dishwasher...but why would you use that when you can stand at the ceramic Belfast sink and do the dishes whilst gazing out at that terrific view?! The sink has a distinctive heritage-style instant boiling water chrome mixer tap and drainer.

The room has two ceiling light fittings and plenty of high and low level cabinets and drawers, tiled splashbacks and Karndean flooring. A half-glazed door leads out to the garden.

Dining Room

12'11" x 10'5" (3.95 x 3.2)

From the sitting room, a door leads into this spacious dining room, which could also be a home office, snug or play room. With Karndean flooring, the room has a large picture book window with fabulous south-facing views. All windows in the home have been re-hinged and have solid metal within the uPVC frames.

There is space for a 4-6 seater dining table and additional furniture. The room has a ceiling light fitting, radiator, electric fire, additional east-facing window and open staircase up to the first floor.

Stairs to first floor landing

The newly-crafted oak staircase leads upstairs and has a stylish runner carpet. At the newly-carpeted landing there is a north-facing window, two ceiling light fittings and matching doors to the three bedrooms and family bathroom.

Bedroom One

13'1" x 10'9" (4 x 3.3)

This well-proportioned master bedroom has magnificent views of the hilly countryside and verdant wide valley...what a place to wake up to! There is plenty of room for a double or king size bed and additional furniture, as well as a useful space above the stairs for additional storage. The high ceiling has a ceiling light fitting. The room is carpeted and has a radiator and a door to the en-suite shower room.



Bedroom One en-suite

7'2" x 3'3" (2.2 x 1)

With a contemporary tiled floor, this room has a shower cubicle with pivoting glass doors, housing a mains-fed shower with tiled surround. There is a ceramic pedestal sink with chrome mixer tap and a ceramic WC with integrated flush. A chrome vertical heated towel rail, recessed spotlights and extractor fan complete this room.

Bedroom Two

10'7" x 10'0" (3.25 x 3.05)

Another double bedroom with south-facing windows means more magnificent views. This bedroom has a high ceiling with light fitting, radiator, new carpets and plenty of space for a double bed and bedroom furniture.

Bedroom Three

7'8" x 6'8" (2.35 x 2.05)

This cosy single bedroom could be a home office or nursery. The north-facing window looks out to the green tree-filled area across the lane. This bedroom has new carpets, a radiator and ceiling light fitting.

Bathroom

10'9" x 6'0" (3.3 x 1.85)

We absolutely adore this room, with splendid views from the bath looking out over the garden towards the stunning countryside. The bathroom has a contemporary ceramic tiled floor and a separate bath and shower. The rectangular bath has a chrome mixer tap and pretty soft pink tiled surround. The corner shower cubicle has sliding glass doors and a rainforest shower head on the mains-fed shower, with white rectangular tiled surround. We really like the classic design shapes of the ceramic WC and the pedestal sink with chrome taps.

We can imagine lazing in the bath where the only sounds we could hear were birdsong and the occasional distant peep from a steam train. The bathroom has a high ceiling with recessed spotlights and a wall-mounted chrome vertical heated towel rail.

The Garden

Beautiful and tranquil, this well-loved south-facing garden has a neat lawn and elevated dining patio. There are multiple flower beds and planted borders packed with carefully selected flowers including snow-in-summer and bellflowers. The views are stunning from all angles.

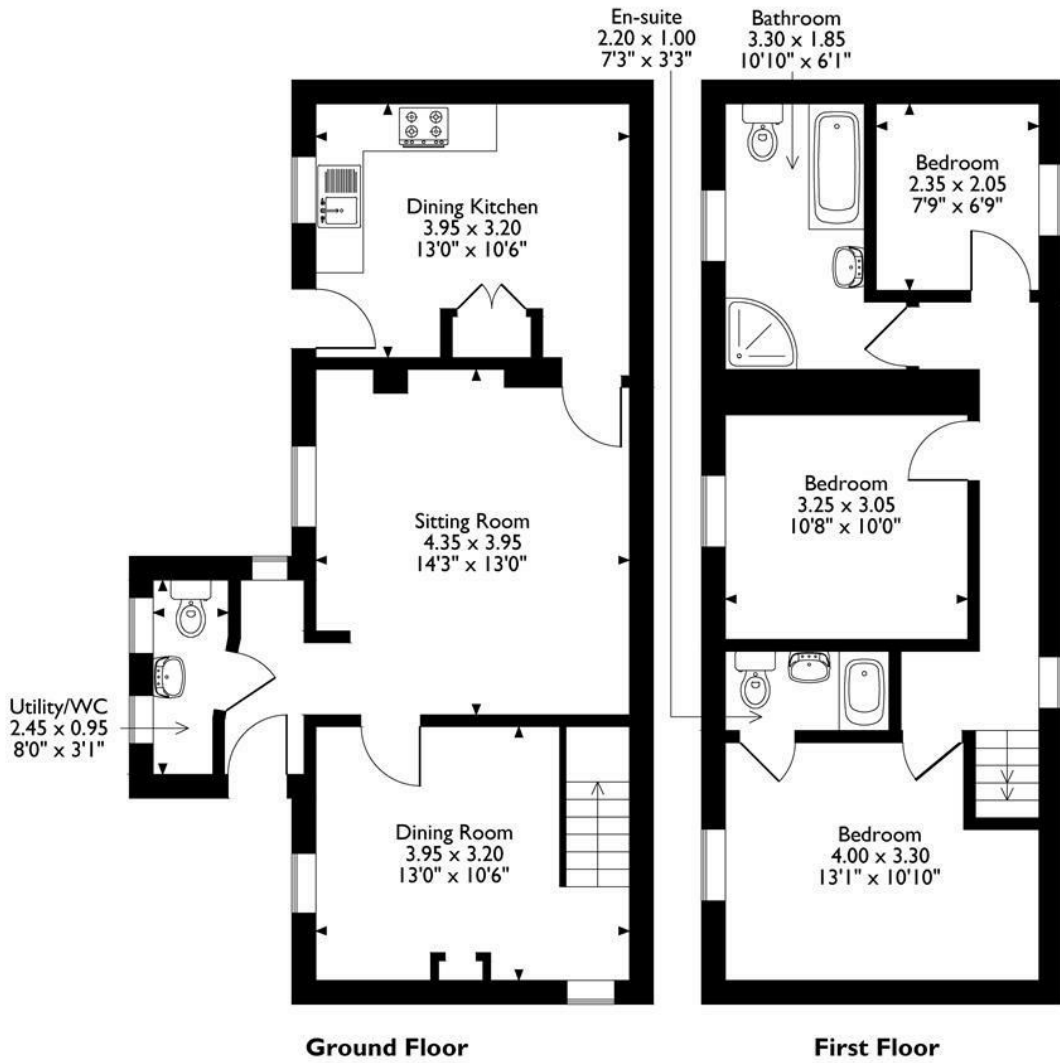
The lovely dining patio has a tall stone wall behind, creating an attractive sun trap. The low level stone walls and a fence with scarlet firethorn plants form the boundary of the garden. There is a large modern shed, outside lights, outside tap and the oil tank is tucked discreetly away.

This is a simply stunning garden in a rural idyll.



Rose Cottage

Approximate Gross Internal Area
92 Sq M / 990 Sq Ft



Please note that the location of doors, windows and other items are approximate and this floorplan is to be used for illustrative purposes only. Unauthorized reproduction is prohibited.



Energy Efficiency Rating		Current	Potential
Very energy efficient - lower running costs			
(92 plus) A			
(81-91) B			
(69-80) C			
(55-68) D			
(39-54) E			
(21-38) F			
(1-20) G			
Not energy efficient - higher running costs			
England & Wales			

Environmental Impact (CO ₂) Rating		Current	Potential
Very environmentally friendly - lower CO ₂ emissions			
(92 plus) A			
(81-91) B			
(69-80) C			
(55-68) D			
(39-54) E			
(21-38) F			
(1-20) G			
Not environmentally friendly - higher CO ₂ emissions			
England & Wales			

10 MARKET PLACE, WIRKSWORTH, DERBYSHIRE, DE4 4ET
TELEPHONE: 0330 122 9960 + 07704 575743

REGISTERED ADDRESS: SUNNYSIDE COTTAGE, MAIN STREET, KIRK IRETON, DERBYSHIRE, DE6 3JP
REGISTERED IN ENGLAND. COMPANY NUMBER: 11836315