

Derby Road, Matlock Bath, DE4 3PU

£415,000

This simply stunning Grade II Listed home has direct access onto the river, unrivaled views of the gorge and a wealth of other attractive features within its stylishly-decorated walls. Located halfway between the historic villages of Cromford and Matlock Bath, this four storey home has five bedrooms, two sumptuous reception rooms, two of the best bathrooms with views that you'll ever see and a beautiful breakfast kitchen. The terraced garden leads directly down to the river where the current owner uses the pontoon to go gently kayaking in the calm stretch of river between the weir and rapids. Additionally, the home includes ownership extending out to half of the river bed with rights to fish in the river from the garden and pontoon. The home also has two off-road parking spaces.

For avid walkers, history buffs and nature lovers, the location is unbeatable. Cromford was the birthplace of the Industrial Revolution and is a UNESCO World Heritage Site. Matlock Bath has been long-famed for its spa waters and remains a very popular tourist destination. The town of Matlock, Cromford Canal and High Peak Trail are all within 2-3 miles also.

We absolutely adore this home - in fact, you might say it's gorge-ous.

Derby Road, , Matlock Bath, DE4 3PU

Front of the home



We adore how this home is positioned in the heart of a grand row of a few houses on the sweeping curve of road between Cromford and Matlock Bath. The vertical gorge behind provides a dramatic backdrop, whilst the double-fronted facade hints that this is a two storey home, so it comes as a surprise to some that there are two substantial lower floors on the river side of the home.

Bounded by a stone wall and iron gate to the main front door, there is also another iron gate and steps down to a lower ground floor entrance. The lovely wooden door is framed by ornate stone jambs and a head and glazed panel over. The door has a brass handle and letterbox and the quality and aesthetic is an accurate indicator of the quality you'll find within this home. Most windows are double-glazed and have stone lintels beneath.

Entrance Hallway

This is a beautiful and uplifting entrance to the home. Muted classic colours on the painted walls and stairs blend with the natural light pouring in from windows on this level and the one above. Underfoot, the square recessed dirt mat is perfect for muddy boots (and maybe a muddy-pawed pooch) after a hearty local walk. Painted wooden floorboards flow into both the lounge and sitting room on this floor...and into most other rooms in the home too. The house benefits from high ceilings throughout and this hallway has a ceiling light fitting. There is also a dado rail, a wooden cabinet on the left housing the gas and electric meters (the home was rewired 20 years ago too), a radiator and doors to the sitting room and lounge. At the far end is a storage cabinet, which houses the Ideal boiler. Beside that cupboard is a tall window with iron latch which offers the first glimpse of those magnificent views over the garden to the river and the verdant vertical cliff opposite.

Sitting Room

18'6" x 11'3" (5.65 x 3.45)



Oozing sophistication, this grand formal room has Farrow & Ball deep blue painted walls and contrasting white painted floorboards, skirting and coving. Natural light floods the room from large windows at the eastern and western ends. The centrepiece of the room is the substantial Contura log burner and flue, set on a ceramic tile hearth with ornate iron surround and mantelpiece. There is a radiator and ceiling light fitting but - as in virtually all rooms - the main attraction is the view.

Lounge

14'6" x 11'5" (4.42 x 3.5)



Slightly smaller than the sitting room but no less inviting, this room also benefits from large windows at both ends and those views! Another Contura log burner sits on a stone hearth with stone surround. The room has painted wooden floorboards, skirting, coving and a high-level dado rail. The ceiling light fitting has a beautiful fanned ceiling rose and there are three wall lights too. A radiator completes this room.

Derby Road, , Matlock Bath, DE4 3PU

Upper Ground Floor



We'll head upstairs first before bouncing back down to the lower ground floor and river level...perhaps saving the best until last. Ascend the white painted wooden stairs with banister and handrail on your left, onto the landing. The picture-book window provides the most elevated and panoramic views of the river gorge, really demonstrating the scale and beauty of this natural wonder. There is a radiator, ceiling light fitting and loft hatch, plus doors to bedrooms 3, 4 and 5 and one of two beautiful bathrooms.

Bedroom Three

13'1" x 10'2" (4 x 3.12)



A lovely calm bedroom with light blue decor and minimalist feel, there is plenty of space for a double bed and furniture. To the front, the sash window has secondary glazing and the room has skirting boards, a radiator and ceiling light fitting.

Family Bathroom One

9'4" x 7'2" (2.85 x 2.2)



What a sanctuary this is! Located on the top floor at the rear of the home, you can laze in your standalone slipper bath and soak up the views across the river to the cliff opposite. That beautiful slipper bath has claw feet and brass taps. The antique style pedestal ceramic sink with matching taps sits beside the WC and cistern. There is plenty of space for storage, furniture or seating.

Bedroom Four

14'6" x 11'7" (4.42 x 3.55)



This is the largest bedroom in the home and has lots of room for a king size bed, furniture and seating. There are views at the front directly across to the grassy knoll opposite through the beautiful sash window with secondary glazing. In the alcove is a double fitted wardrobe and the room has painted floorboards, a radiator and ceiling light fitting.

Bedroom Five-Study

10'9" x 6'10" (3.3 x 2.09)

Currently set up as a home office, it is the perfect size for that purpose. However, it would also be a good single bedroom. The painted floorboards and tall sash window - also with secondary glazing - give it a lovely light feel and there is a radiator and ceiling light fitting.

Lower Ground Floor Landing

Importantly, this home has the possibility of being split into two residences - there are two electric supplies and two front doors.

Derby Road, , Matlock Bath, DE4 3PU

Descend from the ground floor down wooden stairs, with a banister on the right, to the lovely open landing. The picture book window looks down to the river and there is space here for a little desk and chair, should you wish to position your home working base here and gaze at the views. Wooden doors open into Bedrooms One and Two and yet another stunning bathroom. At the front is another 'front door' entrance, which opens out to the large and extremely useful undercroft storage - which is currently used as a substantial log store.

Bedroom One

14'1" x 11'1" (4.3 x 3.4)



We adore this splendid double bedroom. The current owner has positioned the king-size bed to take advantage of those views through the large window. This room has original flagstone flooring and the large stone fireplace houses an ornate log burner - the burner is not currently operational but can be restored to working order and the flue is in full working order. There is a radiator, skirting boards, dado rail, wall lights and ceiling light fitting.

Bedroom Two

11'5" x 7'10" (3.5 x 2.4)

With a walk-in wardrobe creating more space in the room itself, this could be a small double bedroom or good-sized single room. It's cosy with a cute high-level window, painted floorboards, skirting boards, radiator and ceiling light fitting.

Family Bathroom Two

11'5" x 9'6" (3.5 x 2.9)



We love this bathroom too!! Yet again, the standalone slipper

bath is positioned to look out to the stunning panoramic views of the river and cliff. This bath has claw feet and heritage-style taps plus a hand-held shower attachment. In the corner, the mains-fed shower cubicle has curved sliding glass doors and a rainforest shower head, with separate hand-held attachment. There is a ceramic pedestal sink with chrome taps and ceramic WC. This bathroom also has plenty of room for storage and seating, a radiator, two ceiling light fittings and an extractor fan.

Stairs to River Level

From the lower ground floor, descend beneath a quirky rope-operated trap door to the breakfast kitchen and utility area.

Breakfast Kitchen and Utility

16'10" x 15'3" (5.15 x 4.65)



At the foot of the stairs, the original stone wall has been painted a crisp white colour and as you walk around this into the kitchen, light pours in from the river side of the home, presenting instant views of the garden, river and cliff face. On the left, a Rangemaster oven with gas hob and warming ovens is situated within the grand old fireplace. The rest of the kitchen area is fitted with high quality cabinets and a large L-shaped worktop plus an integrated fridge-freezer. The country-style cabinets and drawers have plenty of worktop space above for food preparation and small appliances. Next to this is a large integrated ceramic Belfast sink with chrome mixer tap. There are tiled splashbacks and space on the right for an additional fridge-freezer. Above the sink is a useful wall-mounted crockery rack.

In front of the window is the obvious location to place a dining table and chairs, to drink in those views.

Behind that large stone wall is the utility area, with power, space and plumbing for a washing machine and dishwasher. The whole room has recessed ceiling spotlights and there is a radiator too.

River Garden

Derby Road, , Matlock Bath, DE4 3PU

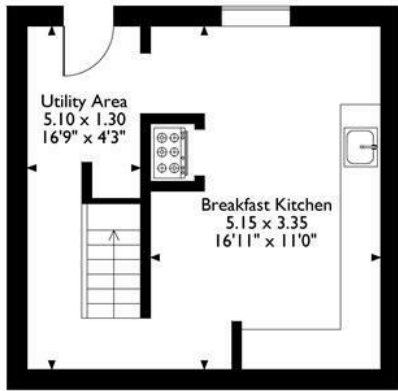


Just idyllic! The photographs convey the beauty more than any words we could write...but here are some words... Stepping out from the kitchen through the part-glazed wooden stable door, you alight onto the dining patio. So entertaining and gathering with family and friends is seamless. This patio has flagstone paving and room for a large dining table and chairs, plus seating. To the left of the rear door is a raised plinth perfect for situating some storage units. The garden itself is terraced over five levels, descending down to the river and pontoon. The garden is packed with a range of colourful plants, flowers and trees including buddleia, roses, hydrangeas and more. It's a gardener's paradise. Two lower level graveled seating areas overlook the river and at the bottom is a stable pontoon, which acts as a launching pad for gentle sojourns along this calm stretch of river. The current owner has a kayak and it's a great, easy way to mess about on the river.

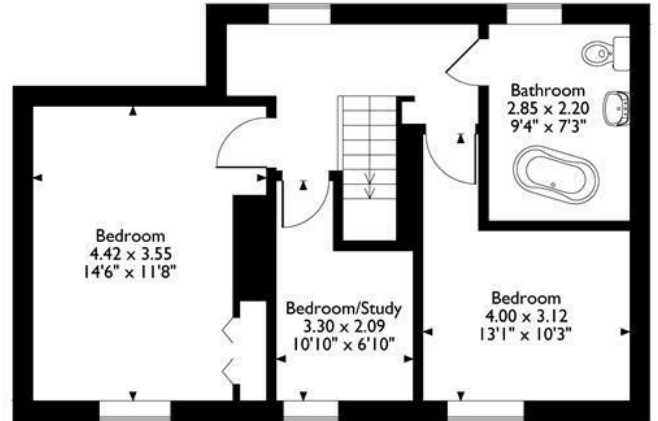
Looking up at the house, you get a sense of the sheer size and scale of the home. To the left as you look, there is right of way up the steps beside the neighbouring house to the road level above.



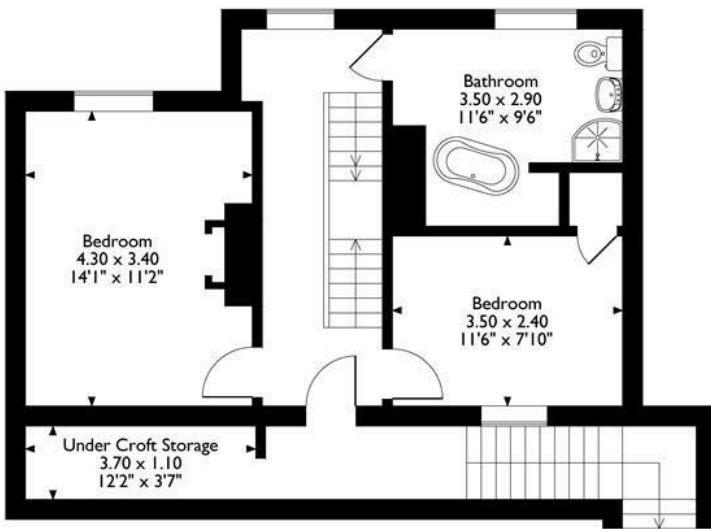
23 Derby Road
 Approximate Gross Internal Area
 182 Sq M / 1959 Sq Ft



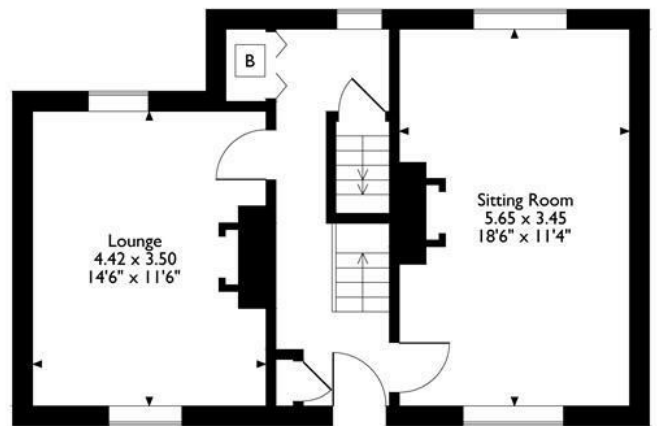
River Level



First Floor



Lower Ground Floor



Ground Floor

Please note that the location of doors, windows and other items are approximate and this floorplan is to be used for illustrative purposes only. Unauthorized reproduction is prohibited.



Energy Efficiency Rating		Current	Potential
Very energy efficient - lower running costs			
(92 plus) A			
(81-91) B			
(69-80) C			
(55-68) D			
(39-54) E			
(21-38) F			
(1-20) G			
Not energy efficient - higher running costs			
England & Wales	EU Directive 2002/91/EC		

Environmental Impact (CO ₂) Rating		Current	Potential
Very environmentally friendly - lower CO ₂ emissions			
(82 plus) A			
(61-81) B			
(40-60) C			
(21-59) D			
(12-39) E			
(1-20) F			
(1-20) G			
Not environmentally friendly - higher CO ₂ emissions			
England & Wales	EU Directive 2002/91/EC		

10 MARKET PLACE, WIRKSWORTH, DERBYSHIRE, DE4 4ET
 TELEPHONE: 0330 122 9960 + 07704 575743

REGISTERED ADDRESS: SUNNYSIDE COTTAGE, MAIN STREET, KIRK IRETON, DERBYSHIRE, DE6 3JP
 REGISTERED IN ENGLAND. COMPANY NUMBER: 11836315