



Jordan fishwick

16 Grosvenor Road, Whalley Range, M16
£1,100 Per Calendar Month



Grosvenor Road Manchester M16 8JP

£1,100 Per Calendar Month



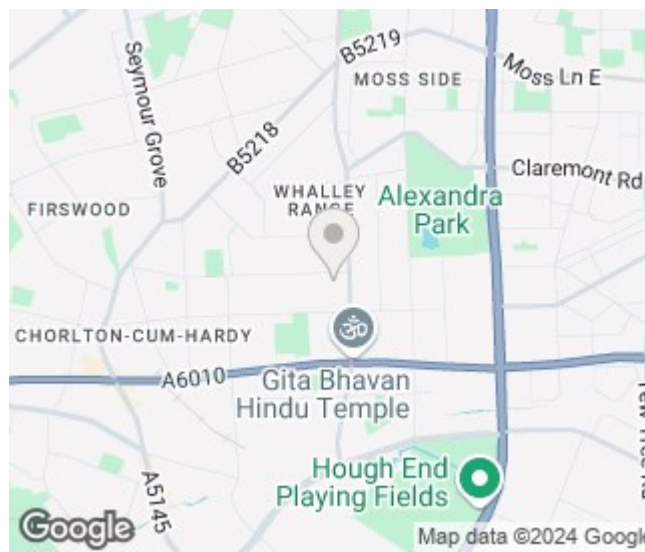
The Property


*** AVAILABLE NOW *** A stunning two bedroom furnished apartment forming part of a purpose built development on a popular road in Whalley Range. The property has been refurbished to a high standard in recent years and offers generous living space. Perfectly suited to a professional individuals or couple, the property is situated within walking distance into Whalley Range and all required amenities. The property briefly comprises; kitchen/diner, two bedrooms and a three piece bathroom suite with shower, and separate utility cupboard. There are double doors from the kitchen opening on to rear decking and private back garden. On-street parking available without the need for a permit from the council at the time of writing. To view this property please contact our Withington branch 0161 438 2411.

Link to virtual tour - <https://youtu.be/MhXSnYNfAIU>

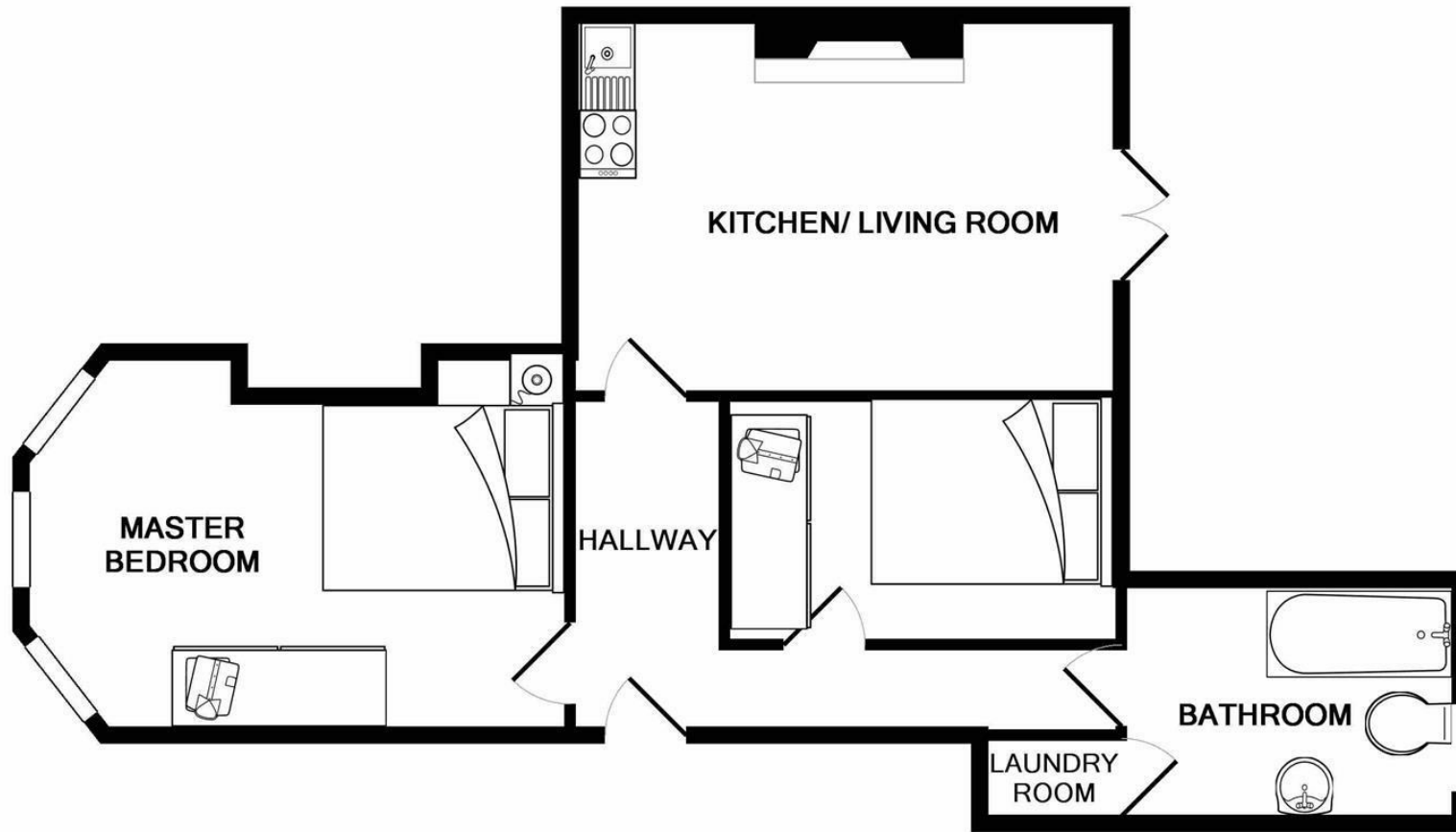
Council Tax Band A // EPC Rating D

- Available Now
- Two Bedroom flat
- Private Garden
- Furnished
- Modern Decor Throughout
- Great Location
- Close to all Local Amenities
- EPC Rating D
- Council Tax Band A



Energy Efficiency Rating		
	Current	Potential
Very energy efficient - lower running costs		
(92 plus) A		
(81-91) B		
(69-80) C		77
(55-68) D	66	
(39-54) E		
(21-38) F		
(1-20) G		
Not energy efficient - higher running costs		
England & Wales	EU Directive 2002/91/EC 	





Whilst every attempt has been made to ensure the accuracy of the floor plan contained here, measurements of doors, windows, rooms and any other items are approximate and no responsibility is taken for any error, omission, or mis-statement. This plan is for illustrative purposes only and should be used as such by any prospective purchaser. The services, systems and appliances shown have not been tested and no guarantee as to their operability or efficiency can be given
 Made with Metropix ©2018



These particulars are believed to be accurate but they are not guaranteed and do not form a contract. Neither Jordan Fishwick nor the vendor or lessor accept any responsibility in respect of these particulars, which are not intended to be statements or representations of fact and any intending purchaser or lessee must satisfy himself by inspection or otherwise as to the correctness of each of the statements contained in these particulars. Any floorplans on this brochure are for illustrative purposes only and are not necessarily to scale.

Offices at: Offices at Chorlton, Didsbury, Disley, Hale, Glossop, Macclesfield, Manchester Deansgate, Manchester Whitworth Street, New Mills, Sale, Wilmslow and Withington