



Jordan fishwick

58 Egerton Road, Fallowfield, M14 6RA
£850 Per Calendar Month



Egerton Road Manchester M14 6RA

£850 Per Calendar Month



The Property

*** AVAILABLE AUGUST *** A stunning one-bedroom duplex flat located on Egerton Road in the sought-after area of Withington, Manchester. This recently refurbished apartment is a perfect blend of modern convenience and traditional charm, making it an ideal home for a professional individual or couple.

Situated in the heart of the popular location in Withington, this property offers easy access to a variety of amenities, including shops, restaurants, and transport links, ensuring that everything you need is right at your doorstep.


The apartment boasts a cosy reception room, a spacious bedroom, and a stylish bathroom, providing comfortable and convenient living spaces. The duplex layout adds a unique touch to the property, offering a sense of space and separation within the home.

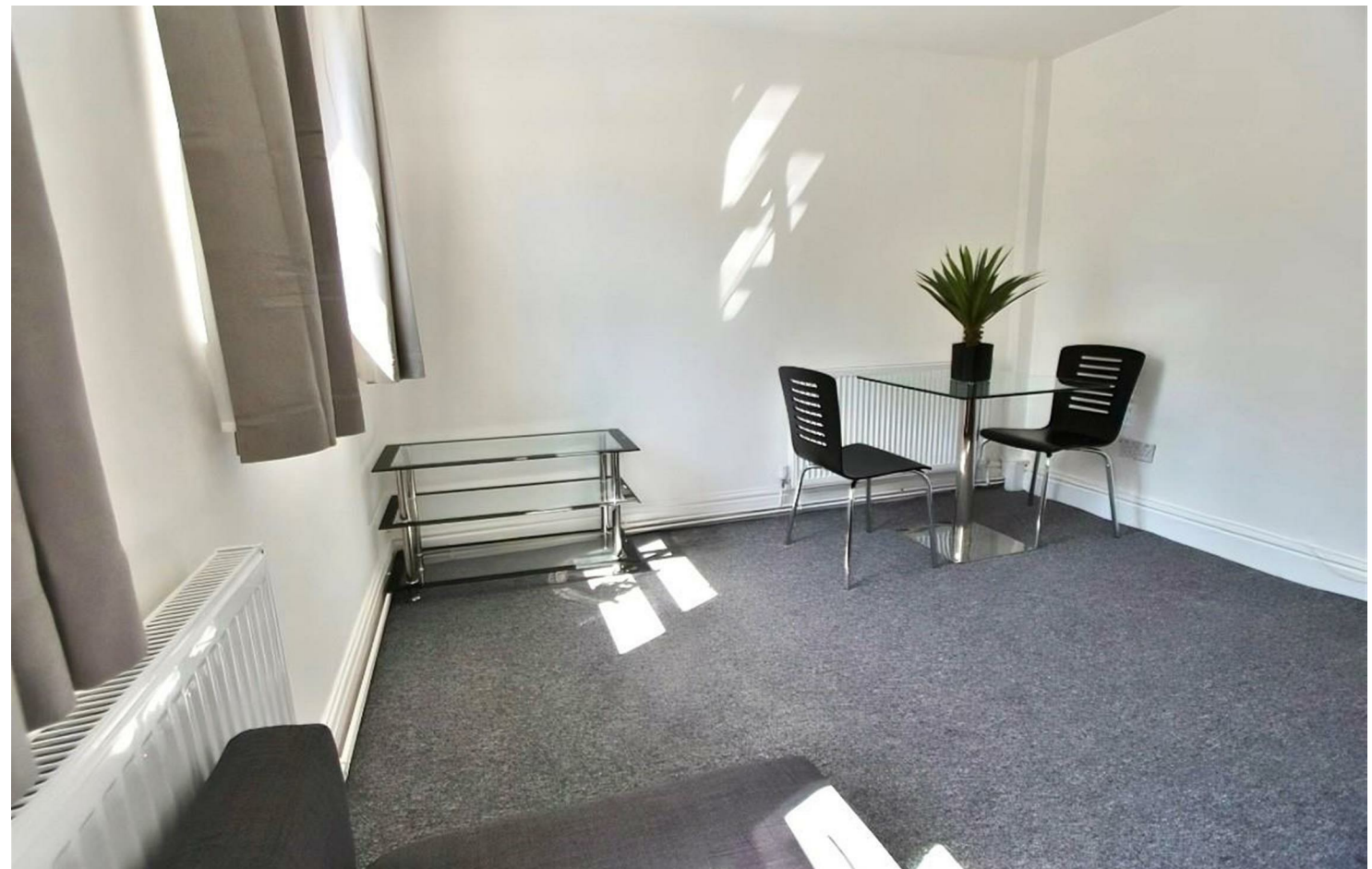
To book a viewing or apply for this property please contact our Withington branch on 0161 438 2411.

EPC Rating - E /Council Tax - A

- Available August
- One Double Bedroom
- Furnished
- Duplex Flat
- Close to all Local Amenities
- Modern Décor Throughout
- On Street Parking
- Great Location
- Council Tax Band A
- EPC Rating - E



| Energy Efficiency Rating | | |
|---|---|-----------|
| | Current | Potential |
| Very energy efficient - lower running costs | | |
| (92 plus) A | | |
| (81-91) B | | |
| (69-80) C | | 78 |
| (55-68) D | | |
| (39-54) E | 44 | |
| (21-38) F | | |
| (1-20) G | | |
| Not energy efficient - higher running costs | | |
| England & Wales | EU Directive 2002/91/EC  | |





These particulars are believed to be accurate but they are not guaranteed and do not form a contract. Neither Jordan Fishwick nor the vendor or lessor accept any responsibility in respect of these particulars, which are not intended to be statements or representations of fact and any intending purchaser or lessee must satisfy himself by inspection or otherwise as to the correctness of each of the statements contained in these particulars. Any floorplans on this brochure are for illustrative purposes only and are not necessarily to scale.

Offices at: Offices at Chorlton, Didsbury, Disley, Hale, Glossop, Macclesfield, Manchester Deansgate, Manchester Whitworth Street, New Mills, Sale, Wilmslow and Withington