

LET AND  
MANAGED BY

*Jordan fishwick  
lettings*

WITHINGTON

0161-438 2411

*Jordan fishwick*

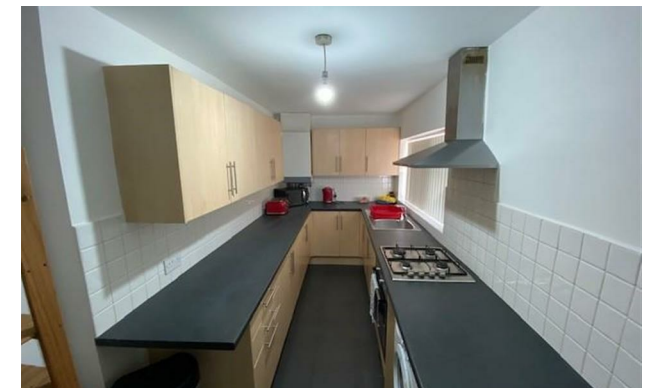
18 Brompton Road, Fallowfield, M14 7GA

£1,400 Per Calendar Month



## Brompton Road Manchester M14 7GA

£1,400 Per Calendar Month



### The Property

View our Virtual Tour Here - <https://youtu.be/Fi-igxZ0nSo>

**\*\*\* AVAILABLE AUGUST \*\*\*** A beautifully presented three double bedroom property set in a great location close to all local amenities and transport links. This property is ideal for three professional sharers or post graduates and perfect for those who commute in to the City Centre and Universities. The property briefly comprises of hallway, large ground floor bedroom, spacious lounge, modern kitchen and rear yard. To the first floor there is a modern bathroom and two further great sized double bedrooms. Gas central heated and double glazed. Fully Furnished. To view please call our Withington branch on 0161 438 2411.

EPC Rating - D

- Available August
- Three Double Bedrooms
- Professional or Post Graduate Sharers Only
- Fully Furnished
- Yard to Rear
- On Street Parking
- Refurbished Throughout in Recent Years
- Great Location
- Council Tax Band A
- EPC Rating D



Energy Efficiency Rating		
	Current	Potential
Very energy efficient - lower running costs		
(92 plus) <b>A</b>		
(81-91) <b>B</b>		<b>83</b>
(69-80) <b>C</b>		
(55-68) <b>D</b>	<b>66</b>	
(39-54) <b>E</b>		
(21-38) <b>F</b>		
(1-20) <b>G</b>		
Not energy efficient - higher running costs		
<b>England &amp; Wales</b>	EU Directive 2002/91/EC	





These particulars are believed to be accurate but they are not guaranteed and do not form a contract. Neither Jordan Fishwick nor the vendor or lessor accept any responsibility in respect of these particulars, which are not intended to be statements or representations of fact and any intending purchaser or lessee must satisfy himself by inspection or otherwise as to the correctness of each of the statements contained in these particulars. Any floorplans on this brochure are for illustrative purposes only and are not necessarily to scale.

Offices at: Offices at Chorlton, Didsbury, Disley, Hale, Glossop, Macclesfield, Manchester Deansgate, Manchester Whitworth Street, New Mills, Sale, Wilmslow and Withington