



jordan fishwick

426 Wilmslow Road, Withington, M20 3BW
£1,050 Per Calendar Month



The Property

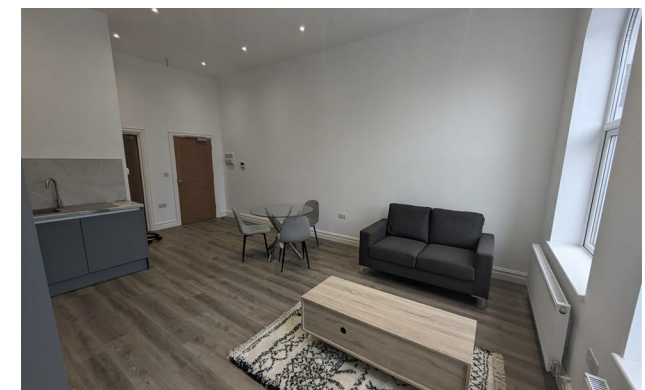
View our Virtual Tour Here - <https://www.youtube.com/watch?v=Jiep1mJtUCE>

**** AVAILABLE NOW **** A spacious and superbly presented one bedroom apartment situated in the heart of Withington Village, located in close proximity to local bars, shops and bus routes into the City Centre. The property has recently been refurbished to an extremely high standard and is perfect for a single occupant or a professional couple. In brief the property comprises; entrance hall, a bright and spacious living area which includes a brand new fitted kitchen including appliances, a spacious double bedroom and a newly fitted modern bathroom. Please note that the property will be fully furnished. Internet and a full Sky TV package to be included in the rental figure. Viewing is highly recommended. Please call Withington on 0161 438 2411 to arrange a viewing.

EPC Rating - C


Wilmslow Road Manchester M20 3BW

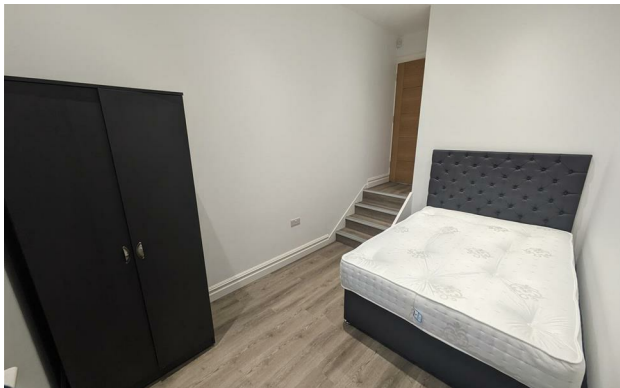
£1,050 Per Calendar Month



- Available Now
- One Bedroom Apartment
- Fully Furnished
- Ideal for Single Occupant or Couple
- Newly Refurbished
- Modern High Standard Throughout
- Fantastic High Street Location
- WiFi & Sky Package Included
- Hive Central Heating System
- Council Tax A



Energy Efficiency Rating		
	Current	Potential
Very energy efficient - lower running costs		
(92 plus) A		
(81-91) B	79	79
(69-80) C		
(55-68) D		
(39-54) E		
(21-38) F		
(1-20) G		
Not energy efficient - higher running costs		
England & Wales	EU Directive 2002/91/EC 	





These particulars are believed to be accurate but they are not guaranteed and do not form a contract. Neither Jordan Fishwick nor the vendor or lessor accept any responsibility in respect of these particulars, which are not intended to be statements or representations of fact and any intending purchaser or lessee must satisfy himself by inspection or otherwise as to the correctness of each of the statements contained in these particulars. Any floorplans on this brochure are for illustrative purposes only and are not necessarily to scale.

Offices at: Offices at Chorlton, Didsbury, Disley, Hale, Glossop, Macclesfield, Manchester Deansgate, Manchester Whitworth Street, New Mills, Sale, Wilmslow and Withington