



65 Moorcroft

Ossett, WF5 9JL

Price £119,950 Leasehold





Set within this popular development lies this two bedroom, third floor apartment which comprises of an entrance hallway, spacious lounge with enclosed kitchen area, family bathroom, double bedroom with built in wardrobes, and a second single bedroom. Please note that there is no lift access to the apartment and there is one allocated parking space.

The property is currently vacant and not subject to any upward chain making it an ideal purchase for the first time buyer or as an investment property.

Location

The property is located within the market town of Ossett and close to the nearby conurbations of Dewsbury and Wakefield which provide a wealth of retail and leisure facilities, as well as public transport links to nearby towns and cities. Ossett is well-connected to the road network, being close to junction 40 of the M1 motorway, while its by-pass, the A638, at the edge of town provides links to Dewsbury and Wakefield.

Accommodation

The apartment is located on a cul-de-sac at the end of a modern residential development and would be ideally suited to a professional single, couple, or first time buyer given the accommodation is sold with no upper vendor chain. The building comprises of a communal entrance hallway with stairs leading to the third floor apartment. On entering the apartment, there is a hallway leading to a good size lounge and kitchen area with a range of base, drawer, and wall units, integrated single oven, gas hob and extractor, plumbing for a washing machine, and space for undercounter fridge. The family bathroom consists of a three piece white suite with wash basin, WC, panelled bath and over bath shower.

Lease Details

The property Leasehold on a 999 year term from 1st January 2002.

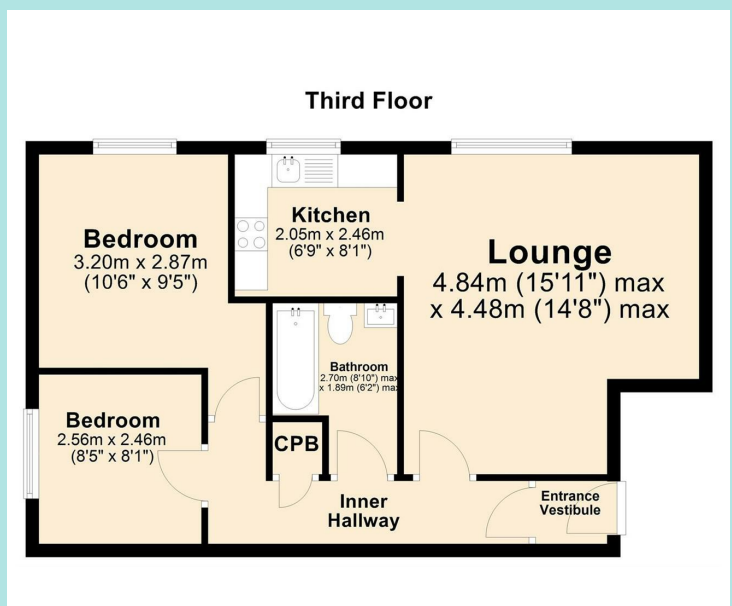
We understand the Service Charge is £1,000 per annum, paid quarterly. Ground Rent is £40.00 per annum.

Council tax band: A

EPC rating: B

Ground rent: N/A

Service charge: N/A



ws-residential.co.uk

01484 711200



These particulars, whilst believed to be accurate are set out as a general outline only for guidance and do not constitute any part of an offer or contract. Intending purchasers should not rely on them as statements of representation of fact, but must satisfy themselves by inspection or otherwise as to their accuracy. No person in this firm's employment has the authority to make or give any representation or warranty in respect of the property.