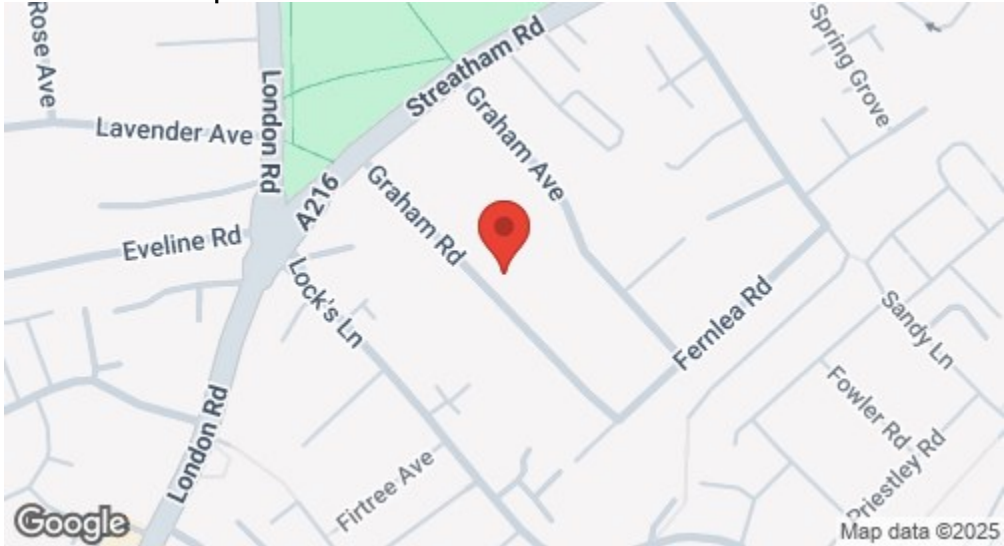
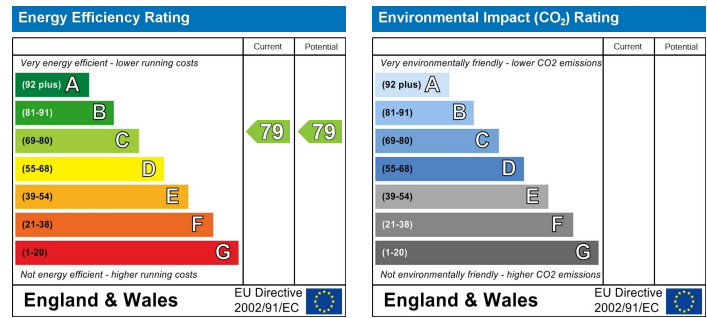


Location

Location Map



EPC Graph



Important Note

Centro Residential Sales and Lettings limited have not tested any services, heating system, electrical system, appliances, fixtures and fittings, that may be included in this property and would advise interested parties to satisfy themselves as to their condition or investigating the presence of any deleterious materials.

Viewing: Strictly by appointment through:

CENTRO RESIDENTIAL SALES AND LETTINGS LIMITED

Tel: 020 8401 5000

E-mail: residential@centro.plc.uk

See a selection of our properties at www.centro.plc.uk

£1,050 Per Month - 24th November 2025

Graham Road, Mitcham, Surrey CR4 2HB



Description

- Conversion Apartment
- Communal Garden
- Ground Floor
- Studio Apartment
- EPC Rating B
- Council Tax Band C



Features

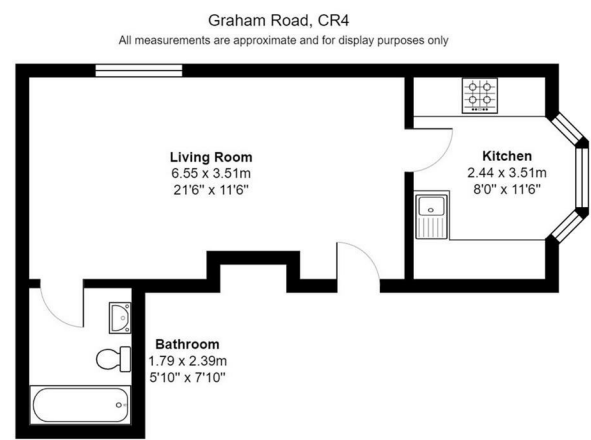
- Gas Central Heating
- Double Glazing
- Neutral Decor

What you need to know

- Term: 12 months
- Rent: £1050pcm exclusive of bills
- Security deposit: £1211.00
- Council Tax Band: C
- Energy Rating: C



Floor Plan



For illustration purposes only



All dimensions and measurements are approximate and for guidance only.

Just Centro's Opinion...

A conversion Studio apartment set along a quiet residential road in Mitcham and only a short walk to Eastfields Rail Station. This ground floor apartment offers you spacious living with sleeping and dining space, a separate new kitchen with appliances and a separate stylish bathroom.

Everything is brand new including flooring, decoration throughout, gas central heating, double glazing and appliances which include Gas Hob and Oven, Fridge, Washing Machine and Slimline Dishwasher. You have the added bonus of side access to a communal garden and free on-street Parking.

Mitcham Eastfields Station, 0.2 miles, Tooting Station, 0.6 miles and Colliers Wood Station is 1.1 miles away.

Offered unfurnished and available in November.

Additional Photos

