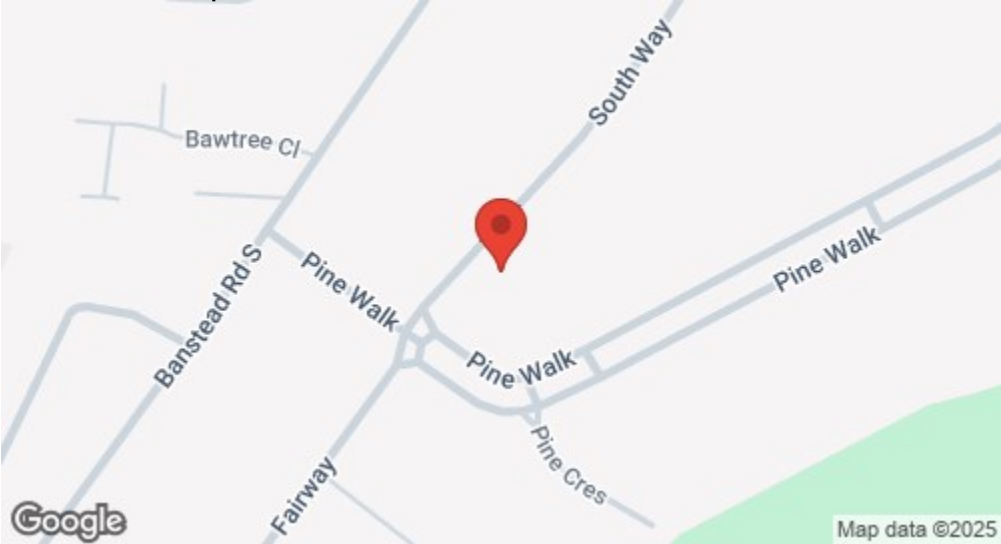
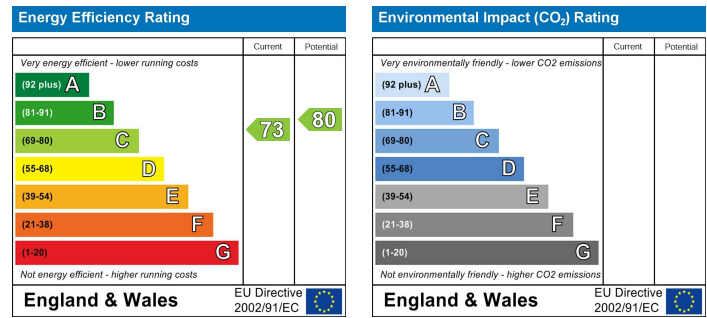


Location

Location Map



EPC Graph



Important Note

Centro Residential Sales and Lettings limited have not tested any services, heating system, electrical system, appliances, fixtures and fittings, that may be included in this property and would advise interested parties to satisfy themselves as to their condition or investigating the presence of any deleterious materials.

Viewing: Strictly by appointment through:

CENTRO RESIDENTIAL SALES AND LETTINGS LIMITED

Tel: 020 8401 5000

E-mail: [residential@centro.plc.uk](mailto:residential@centro.plc.uk)

See a selection of our properties at [www.centro.plc.uk](http://www.centro.plc.uk)

£5,500 Per Month - 20th June 2025

Southway, Carshalton, SM5 4HW



Description

- Detached House
- Six Bedrooms
- In/Out Driveway
- Recently Refurbished
- Excellent Location
- Annex
- Council Tax Band G
- EPC Rating C

Features

- Gas Central Heating
- Double Glazing

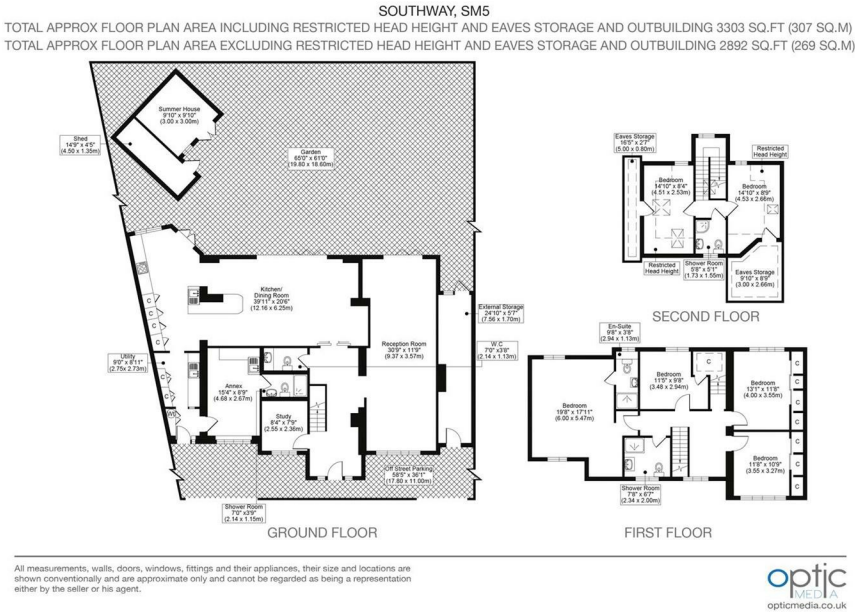
What you need to know

- Term: 12 months
- Rent: £5500pcm exclusive of bills
- Security deposit: £7615.00
- Council Tax Band G
- Energy Rating: C





Floor Plan



For illustration purposes only



All dimensions and measurements are approximate and for guidance only.

*Just Centro's Opinion...*

Nestled in the charming area of Southway, Carshalton, this impressive detached house offers a perfect blend of modern living and classic elegance. The property has been recently refurbished to a high standard, ensuring a comfortable and stylish home for tenants.

Upon entering the property, you will find two beautifully appointed reception rooms and a separate study — perfect for both relaxed living and working from home. At the heart of the home is a stunning open-plan kitchen and dining area, designed for both everyday use and entertaining. Bifold doors open onto a landscaped rear garden, creating a seamless transition between indoor and outdoor living — ideal for al fresco dining and summer gatherings. Additionally, the ground floor offers a versatile space with annex potential — perfect for guests, a home office, or a playroom, depending on your family's needs.

Upstairs, the home continues to impress with six generously sized bedrooms and four contemporary bathrooms, offering comfort, privacy, and flexibility for families of all sizes.

This delightful home is situated in a peaceful neighbourhood, making it an ideal retreat while still being conveniently located near local amenities and

Additional Photos

