



Basil Street SW3

**MARLER
& MARLER**

Basil Street SW3

A spacious three bedroom ground floor apartment in this well maintained portered building in the heart of Knightsbridge. It is well located for Harrods and designer shops of Sloane Street. Only a short walk from Hyde Park and Knightsbridge underground station.

- Two Double Bedrooms
- One Single Bedroom
- En suite Bathroom
- En suite Shower Room
- Reception
- Kitchen
- Dining Area/Entrance Hall
- Utility Room
- Porter
- Access to Communal Patio Garden
- Council Tax Band G - £1,871.78
- 1194 sq ft
- Available

RENTAL

£1,200 per week plus fees

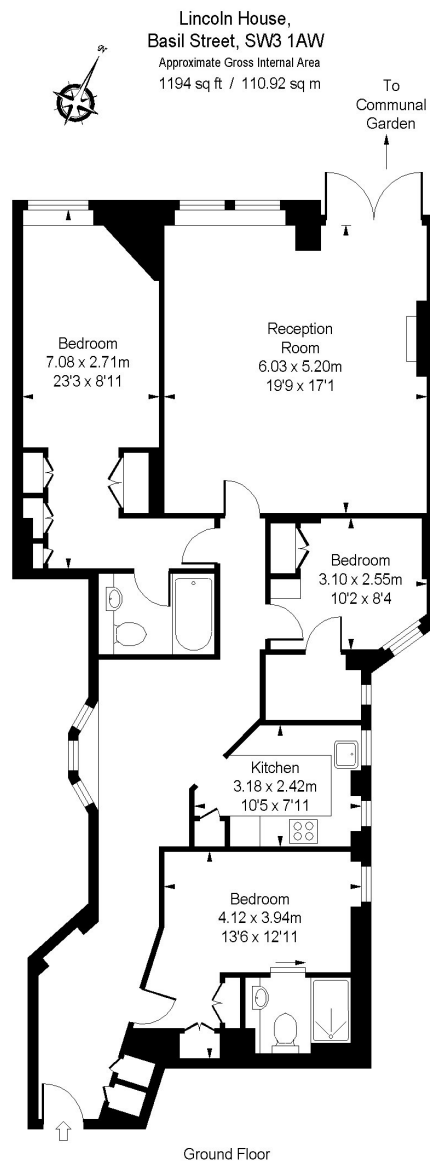
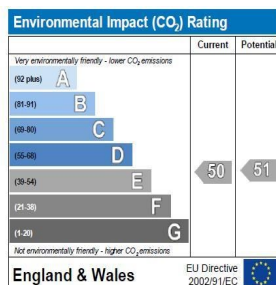
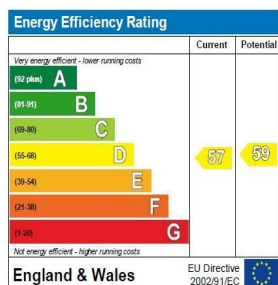


ILLUSTRATION FOR IDENTIFICATION PURPOSES ONLY

ALL MEASUREMENTS ARE MAXIMUM, AND INCLUDE WINDOW BAYS AND WARDROBES WHERE APPLICABLE
THIS PLAN MUST NOT BE REPRODUCED BY ANY OTHER PERSON WITHOUT PERMISSION



MARLER & MARLER

020 7235 9641
marlerandmarler.co.uk