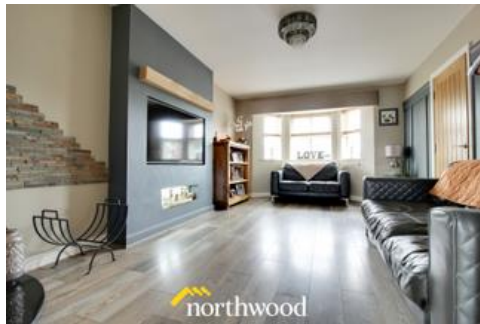




Kirton Lane , Thorne
Offers in excess of £345,000



5 4 1

Freehold | EPC Rating: TBC

- Detached
- En-suite
- Large Plot

- Five Bedrooms
- Ample Parking
- Planning Permission For Extension



Email
thorne@northwooduk.com

Phone
01405 814999

Description

Northwood Thorne are proud to bring to the market this simply stunning, substantial five bedroom detached property stretched over three floors in the extremely sought after location of Kirton lane in the popular market town of Thorne. Boasting spacious and modern family living throughout, sitting on an amazing plot.

This individual property briefly comprises; Spacious living room, modern fitted kitchen with integrated appliances including fridge/freezer and wine cooler with breakfast bar and Dining area, Downstairs W.C. The first floor offers; master bedroom with En Suite, two further double bedrooms and family bathroom with bath and stand alone shower unit. Up the second staircase you will find two further double bedrooms and W.C. Setting this Property apart from the rest on the current market is its beautiful plot, laid to lawn garden. Off street parking for multiple cars.

Kirton Lane - These details are intended to give a fair description only and their accuracy cannot be guaranteed nor are any floor plans (if included) exactly to scale. These details do not constitute part of any offer or contract and are not to be relied upon as statements of representation or fact. Intended purchasers are advised to recheck all measurements before committing to any expense and to verify the legal title of the property from their legal representative. Any contents shown in the images contained within these particulars will not be included in the sale unless otherwise stated or following individual negotiations with the vendor. Northwood have not tested any apparatus, equipment, fixtures or services so cannot confirm that they are in working order and the property is sold on this basis.

Photographs



Rooms

Entrance

Front facing UPVC door, laminate flooring, under stair storage, inset lights, radiator.

Living Room

Front facing bay window, double doors to the kitchen, radiators, TV point, phone point, laminate flooring.

11.5ft x 16.7ft (3.5m x 5.1m)

Stairs & Landing

Side facing UPVC window, radiator, storage cupboard, inset lights.

En-Suite

Front facing UPVC window, shower, vanity unit with basin, toilet, half tiled walls, vinyl flooring, extractor fan.

5.7ft x 6.3ft (1.74m x 1.93m)

Bedroom Three

Back facing UPVC window, carpet, radiator, TV point

7ft x 10.8ft (2.14m x 3.3m)

Second Staircase

Carpet

W/C

Toilet, vanity unit with inset sink, radiator, extractor fan, inset lights, tiled flooring, half tiled walls.

3.9ft x 5.9ft (1.2m x 1.8m)

Kitchen/Diner

Back facing double doors, back facing UPVC door, two side facing UPVC windows, wall & base units, four ring gas hob, electric oven, dishwasher, fridge/freezer, wine cooler, 1.5 sink with mixer tap, tiled splash back, cupboard with wall mounted boiler, laminate flooring, extractor, radiator, inset lights, TV point.

13.5ft x 17.7ft (4.13m x 5.4m)

Bedroom One

Front facing UPVC window, carpet, radiators, TV point.

10.9ft x 11.2ft (3.33m x 3.4m)

Bedroom Two

Back facing UPVC window, carpet, radiator, TV point.

10.5ft x 10.8ft (3.2m x 3.3m)

Family Bathroom

Side facing UPVC window, bath, shower unit, vanity unit with basin, toilet, half tiled walls, vinyl flooring, radiator, extractor, inset lights.

2.36m x 3.20m(max)

Bedroom Four

Front facing UPVC window, carpet, radiator, TV point.

11.5ft x 14.5ft (3.5m x 4.41m)

Rooms

Bedroom Five

Back facing UPVC window, carpet, radiator, TV point
9ft x 11.5ft (2.75m x 3.5m)

Toilet

Toilet, Sink, vinyl flooring, radiator.
5.9ft x 6ft (1.8m x 1.84m)

Front

Large stoned driveway.

Rear

Large plot, bar area, gazebo, patio area, grassed area,
enclosed rear.

More photographs



Floorplan



Map

