



3 Meadowcroft Farm Lowercroft Road | Bury





Meadowcroft Farm Bury Greater Manchester



Farm Conversion
High Specification
Large Open Plan
Living
Master Bedroom
Suite
Four Generous
Bedrooms
Breath Taking
Views



Accessed via a private gated lane leading to a collection of four executive properties, situated in an elevated position to take advantage of breath taking panoramic views. The developer has chosen to sympathetically convert the farmhouse and barn into spacious mews properties finished to the highest of specification.

The accommodation briefly comprises of an entrance hallway, with a built in cloakroom, a large open plan living space for dining and entertaining. The fully fitted kitchen offers an exceptional range of units and design with Neff appliances and Silestone worktops. There is a separate home office off the main living space and separate utility room.







The accommodation briefly comprises of an entrance hallway with a built in cloakroom, a large open plan living space for dining and entertaining. The fully fitted kitchen offers an exceptional range of units and design with Neff appliances and Silestone worktops. There is a separate home office off the main living space and separate utility room.

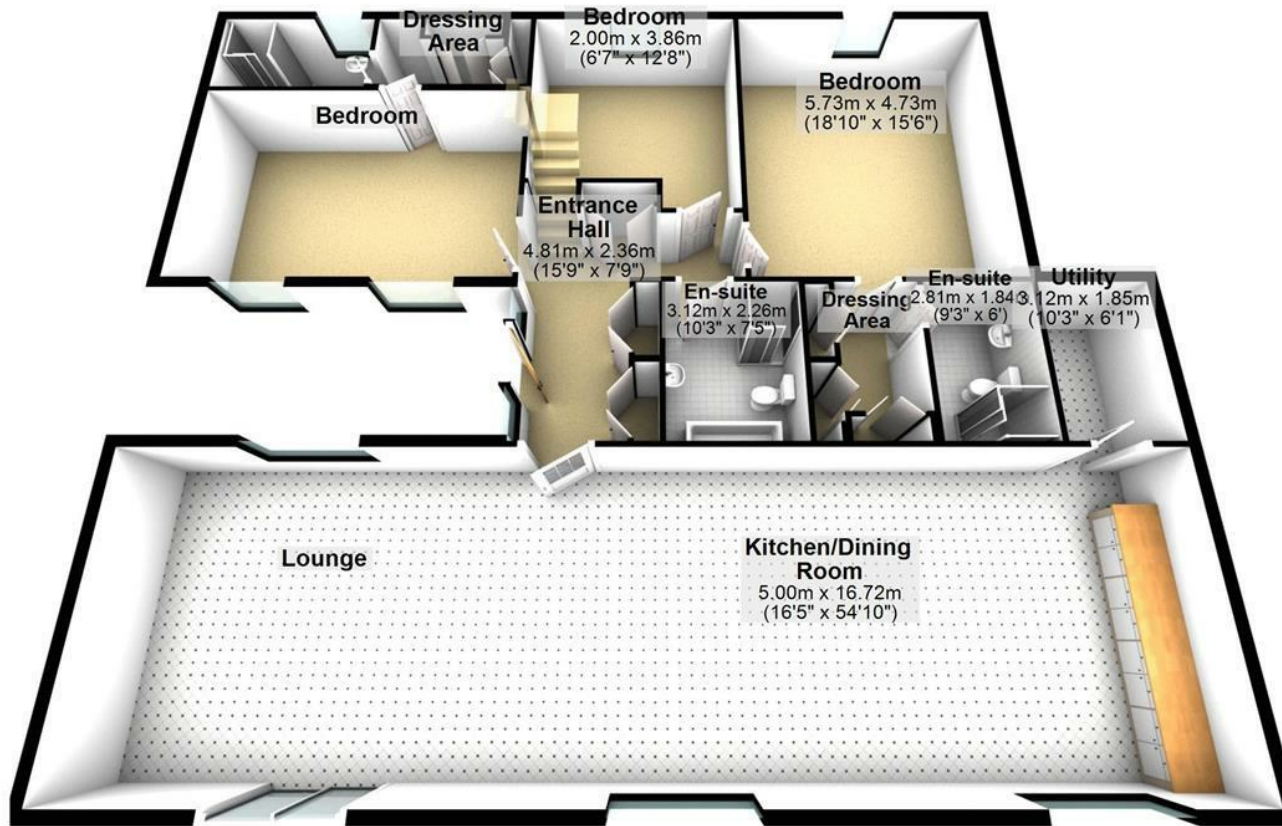
The master bedroom suite has an opulent en-suite also with a walk-in wardrobe, the second bedroom also has an en-suite with the remaining two bedrooms, one of which occupies the first floor and is complete with a dressing area, sharing a large and impressive bathroom suite. Externally the property has allocated off road parking, garden storage and a generous garden plot which also has panoramic views.

For a private showing please contact us to arrange.



Ground Floor

Approx. 205.7 sq. metres (2214.4 sq. feet)



First Floor

Approx. 20.2 sq. metres (217.7 sq. feet)



Total area: approx. 226.0 sq. metres (2432.1 sq. feet)

3 Meadowcroft Farm
Lowercroft Road

Bury
BL9 0DD

: £750,000
Tenure: Freehold
Local Authority: TBC
EPC Rating:



IMPORTANT NOTICE: Maison Haus Limited, their solicitors and any joint agents give notice that: 1. They are not authorised to make or give any representations or warranties in relation to the property either here or elsewhere, either on their own behalf or on behalf of their client or otherwise. They assume no responsibility for any statement that may be made in these particulars. These particulars do not form part of any offer or contract and must not be relied upon as statements or representation of fact. 2. Any areas, measurements or distances are approximate. The text, photographs and plans are for guidance only and are not necessarily comprehensive. It should not be assumed that the property has all necessary planning, building regulations or other consents and Maison Haus Limited have not tested any services, equipment or facilities. Purchasers must satisfy themselves by inspection or otherwise.



Mill Lane, Alderley Edge, Cheshire SK9 7TY
moving@maison.haus
01625 919 079