



North Street | Bury







## North Street | Bury



- Luxury Country Retreat
- Breath Taking Views
- Approximately 17 Acres
- Idyllic Location
  - Equestrian Facilities
- Excellent Motorway Access





The grounds are split into different areas including formal patio gardens with lawns and well stocked matured borders, two grazing paddocks to service the 6 stables and tack room, Ménage in total approximately 5 acres. The privacy of the property is absolutely superb with the grounds not being overlooked, gated with a secure with an intercom system. The Barn is an exceptional detached stone house finished to an impeccable standard throughout. The house enjoys a view of beautiful gardens with approximately 16 acres that surround the property. The property would suit the equine lover with some of the areas most popular bridal ways neighbouring the property. Ramsbottom an unspoiled Victorian mill town nestled in the West Pennine Moors boasts some of the Norths finest restaurants and famous landmarks such as Peel Tower on Holcombe Hill. The interior of the house combines a high quality contemporary design both light and spacious. Inspection will reveal the high quality specification - with no expense having been spared to create an exceptional house.



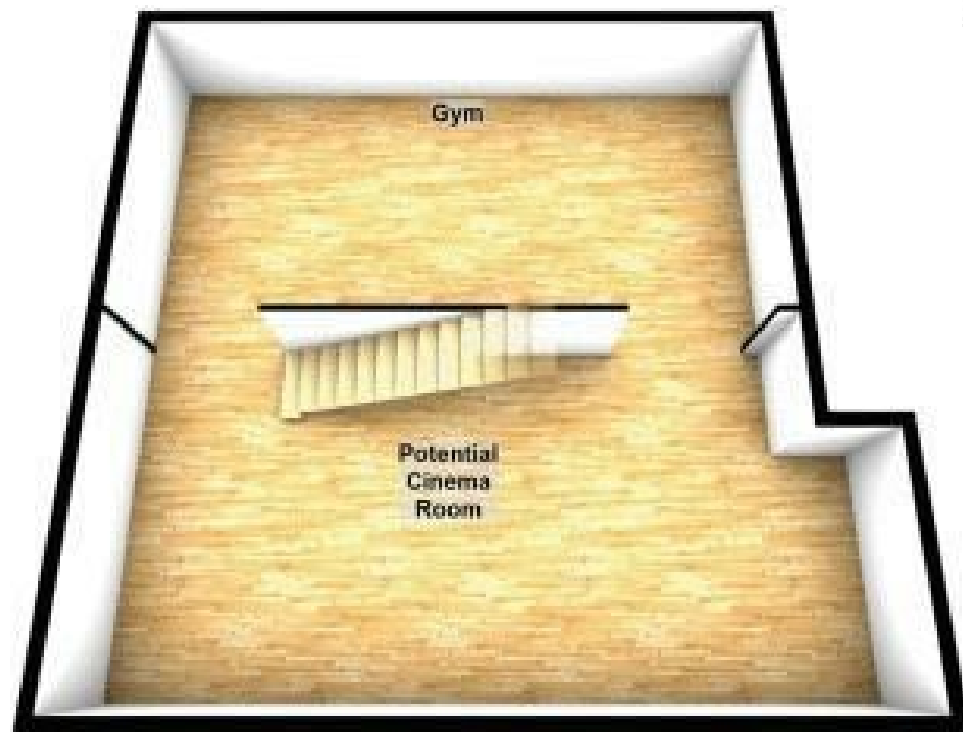




The accommodation opens through an exposed stone vestibule to a large entrance hall. The cloakroom is beautifully fitted whilst the four principal reception rooms are the living room, dining room, home office, music room enjoying views of the landscaped gardens. The fitted dining kitchen with dining area opens to the rear Indian stone terrace and a separate utility space. The cellar is currently utilised as a gymnasium but could also be utilised as a cinema room. At first floor level the landing leads to five double-sized bedrooms, two of which benefit from en-suite facilities and walk in wardrobes. The three remaining bedrooms are served by a large and impressive bathroom. The Barn is located central for Bury centre amenities and the well renowned Bury Grammar School is within a short commute whilst Rams-bottom Village amenities within walking distance.

A comprehensive road network system can be reached within minutes, with key roads such as the M66 junction 2 bringing Liverpool, Manchester, north Wales and the Midlands within commutable distance. Likewise, there are excellent rail links and metro services, while Manchester and Liverpool International Airports are within an hours' drive.







North Street  
Bury  
BLO 0PB

Guide Price: £1,250,000  
Tenure: Rossendale Council  
Local Authority: C  
EPC Rating:



IMPORTANT NOTICE: Maison Haus Limited, their solicitors and any joint agents give notice that: 1. They are not authorised to make or give any representations or warranties in relation to the property either here or elsewhere, either on their own behalf or on behalf of their client or otherwise. They assume no responsibility for any statement that may be made in these particulars. These particulars do not form part of any offer or contract and must not be relied upon as statements or representation of fact. 2. Any areas, measurements or distances are approximate. The text, photographs and plans are for guidance only and are not necessarily comprehensive. It should not be assumed that the property has all necessary planning, building regulations or other consents and Maison Haus Limited have not tested any services, equipment or facilities. Purchasers must satisfy themselves by inspection or otherwise.



Mill Lane, Alderley Edge, Cheshire SK9 7TY  
[moving@maison.haus](mailto:moving@maison.haus)

01625 919 079