



Crewe Road | Crewe





Crewe Road | Crewe



- Approximately 2 Acres With Planning Permission
 - Rare Opportunity
- Existing Family House Included
- Farm house with Approximately 2 Acres
 - Close to Nantwich Centre
 - Four Bedrooms
- Near Executive Detached Houses
- GDV Appraised at Approximately £2.9m (Subject to Surveys)
- With Planning Permission for 5 Gated Executive Detached Houses



Shavington Green Farm is a private gated farm with approximately 2 acres of land bordered with mature fruit trees and a natural pond at its entrance.





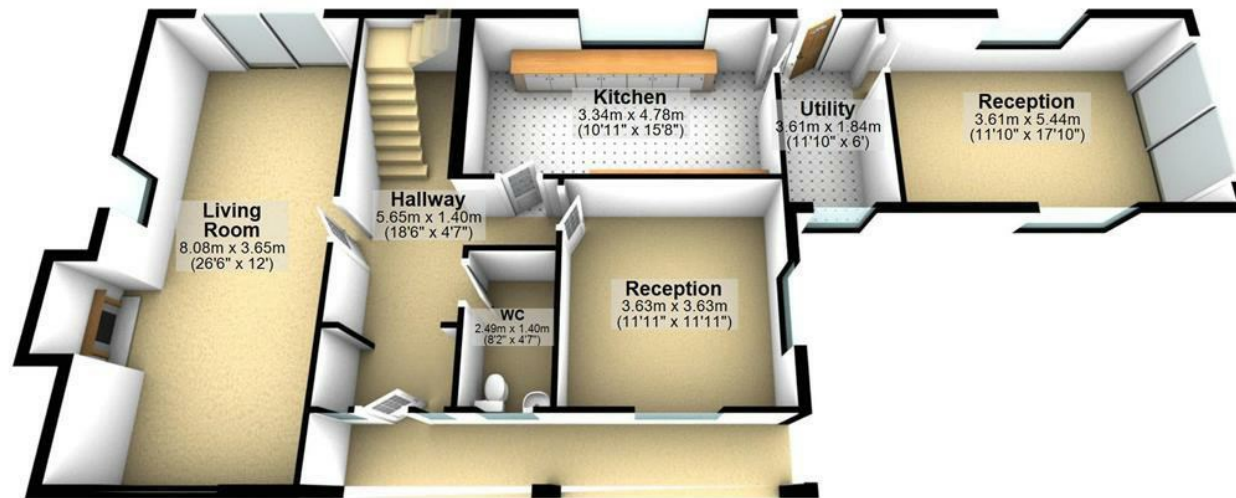
The detached farm house briefly comprising of three reception rooms and four good sized bedrooms. Externally the property enjoys garden views with ample gated parking.

There is currently planning permission should a buyer choose to build up to 5 executive detached homes within the grounds.

We expect early interest, for a private showing please contact the office.



Ground Floor



First Floor



Crewe Road
Crewe
CW2 5JB

Asking Price: £1,200,000
Tenure: Freehold
Local Authority: Cheshire East Council
EPC Rating: D



IMPORTANT NOTICE: Maison Haus Limited, their solicitors and any joint agents give notice that: 1. They are not authorised to make or give any representations or warranties in relation to the property either here or elsewhere, either on their own behalf or on behalf of their client or otherwise. They assume no responsibility for any statement that may be made in these particulars. These particulars to not form part of any offer or contract and must not be relied upon as statements or representation of fact. 2. Any areas, measurements or distances are approximate. The text, photographs and plans are for guidance only and are not necessarily comprehensive. It should not be assumed that the property has all necessary planning, building regulations or other consents and Maison Haus Limited have not tested any services, equipment or facilities. Purchasers must satisfy themselves by inspection or otherwise.



Mill Lane, Alderley Edge, Cheshire SK9 7TY
moving@maison.haus

01625 919 079