



SALES & LETTINGS



James Sleeman Close, Great Oldbury, Stonehouse
Gloucestershire GL10 3GU

£490,000

- Four Bedrooms
- Detached Family Home
- Two Bathrooms
- Kitchen/Breakfast Room
- Well Presented Throughout
- Garage/Office
- Cloakroom
- Home Office

The Property

****Four Bedroom Family Home****

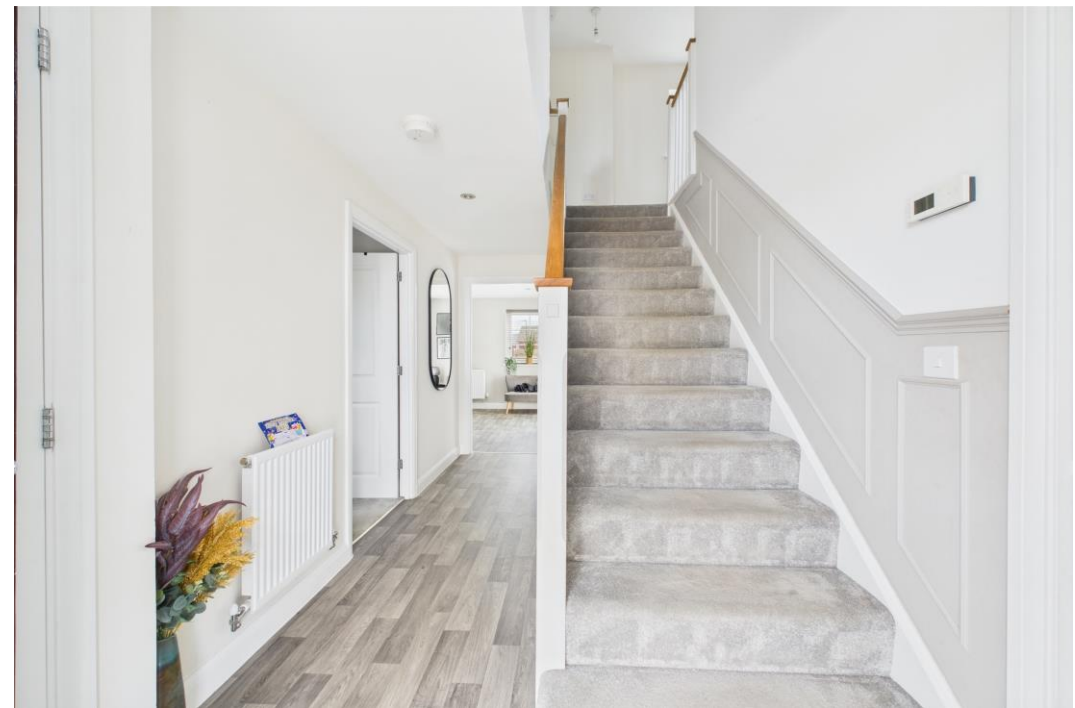
TG Sales is pleased to present this beautifully presented four-bedroom detached property located in the highly sought-after Great Oldbury Development. This area offers excellent access to schools, including Great Oldbury Primary Academy, local secondary schools, and the esteemed Wycliffe College.

Upon entering this fabulous home, you will find ample internal space, featuring a living room with a media wall and French doors leading to the rear garden. The property also includes a versatile dining room that can serve as an office, a cloakroom, and a spacious family kitchen/breakfast room with an island that overlooks the enclosed rear garden.

On the first floor are three double bedrooms and one single bedroom. The master bedroom has built-in wardrobes and an ensuite shower room, while bedroom three also features built-in storage. A family bathroom completes this level.

The rear garden is fully enclosed by walls and timber fencing and features a covered seating area, perfect for entertaining, a patio, and a lawn. Off-road parking is available for two vehicles on the side of the property. The garage has been converted into a home workspace, currently utilised as a hair salon equipped with both hot and cold water; however, it could also serve as an excellent home office.

This is a fantastic family home with full gas heating, double glazing throughout, and the remaining NHBC warranties.



Situation

Great Oldbury is ideally located, offering a variety of amenities for everyone. The area has excellent access to education, including Great Oldbury Primary Academy, several secondary schools, and the renowned Wycliffe College. There are also convenient transport links, including bus routes and the Stonehouse train station, which provides direct connections to London Paddington. Additionally, the M5 motorway offers easy access to major cities beyond the immediate area. For recreation, Great Oldbury features a community center and several children's play areas throughout the development. Residents will also find a range of shops and dining options in the nearby towns of Stonehouse and Stroud.

Directions

SATNAV postcode GL10 3GU

Tenure Freehold

Local Authority Stroud

Services Electric, Mains Gas, Mains Drainage and Water are all believed to be connected to the property.

Council tax band E



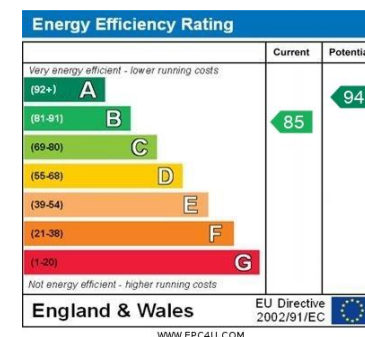


Floor 0 Building 1



Floor 1 Building 1

Head Office
TG Sales & Lettings
48 Stroud Road
Gloucester
Gloucestershire
GL1 5AJ
Tel: 01452 311776
Email: info@tgres.co.uk
Website: www.tgres.co.uk



T G Sales & Lettings and any parties they are acting for hereby give you notice that: These details are for guidance only and cannot guarantee the accuracy of any description, dimension, condition or any required permission for occupation and use. It is not company policy to test any services or appliances in properties offered for sale and these should be verified by the purchaser's solicitors. T G Sales & Lettings will not be liable for any loss arising from the use of these details. No responsibility is taken for any errors, omissions or misstatements within these particulars. It should not be assumed that the property has all the necessary planning, building regulation or other consents. These particulars do not form any part of any offer or contract and must not be relied upon as statements or representations of fact. Buyers are advised to seek advice from their legal representation. T G Sales & Lettings is a limited liability partnership registered in England and Wales. Registered Number: 9763381 Registered Office: 48 Stroud Road, Gloucester, Gloucestershire, GL1 5AJ.