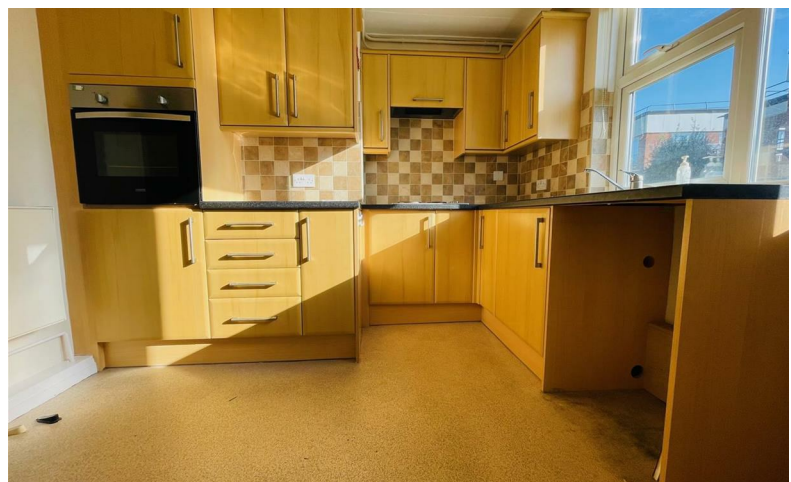




READINGS

www.readingspropertygroup.com



£850 Per Calendar Month

Flat 2 Devonshire Court Howdon Road, Oadby, Leicester, Leicestershire, LE2 5WQ

Flat 2 Devonshire Court Howdon Road, Oadby, Leicester, Leicestershire, LE2 5WQ

A fabulous ground floor flat in an over 60's development in the grounds of a nursing home on the southern edge of Oadby. Entrance hall, spacious lounge/diner, well appointed kitchen, bedroom with built in wardrobes, shower room and separate WC. Communal gardens and communal parking. All gas, electricity and water bills included! Nice peaceful spot-viewing a must! Council tax band A

Enclosed Porch

Entrance Hall

Through Lounge/Diner

21'3" x 11'1" (6.5m x 3.4m)

Kitchen

9'10" x 9'2" (3m x 2.8m)

Bedroom

11'5" to wardrobes x 9'10" (3.5m to wardrobes x 3m)

Shower Room

8'6" x 6'10" (2.6m x 2.1m)

Separate Toilet

Outside

Communal parking and gardens.

Rightmove Viewing Procedure

1. Send an email enquiry through Rightmove and fill in the preliminary application form with your details

2. Please be as honest as possible with your information. For example, if you believe that you have a bad credit rating, let us know now - it will only show up on your credit check if you don't!

3. We will discuss your application with the landlord. If they are happy, we will book a physical viewing at the

property

4. After the viewing you will provide your feedback on the automatic feedback form. If the landlord selects your application, you will pay a 1 week's rent holding deposit and proceed to the referencing

5. Once the references are complete and acceptable, you will book your move in date. The contract will be sent out the week before

6. You will need to pay your first months rent and deposit a few days before your move in date (minus the 1 week's rent holding deposit you already paid)

7. You will need to bring your original passport with you on the day you collect the keys for the physical Right to Rent checks

Agent's Note

CONSUMER PROTECTION LEGISLATION - These sales details have been written to conform to Consumer Protection Legislation. Whilst we endeavour to make our sales details accurate and reliable, if there is any point of particular importance to you, please contact the office and we will check the information for you, particularly if contemplating travelling some distance to view. Measurements are given in good faith and whilst believed to be accurate these should be checked by the purchaser for verification. The measurements are carried out in accordance with the RICS and ISVA code of measuring practice.

