



DEANS ROAD
W7

£675,000

Hanwell



DEANS ROAD, W7

£675,000



Two Reception Rooms



Kitchen/
Dining Room



Three Bedrooms



Bathroom



On Street

A pretty Victorian red brick terraced home which boasts of over 1000 sq ft and is set on a quiet street in the heart of Hanwell within easy reach of West Ealing. This substantial house has the potential to add further space if you need it and subject to the usual consents. This house benefits from three natural bedrooms, front reception room, downstairs WC, a further large extended reception kitchen dining room which leads on to a large private rear garden and you have a family bathroom on the first floor.

This home is situated in a quiet residential neighbourhood that falls into the Oaklands School & Elthorne High School catchment area. Nearby Elthorne Park provides a spot to enjoy the fresh air and wide open spaces, as does the beauty of the grounds surrounding Boston Manor House. Hanwell train station is within walking proximity which is also to benefit from future Crossrail.

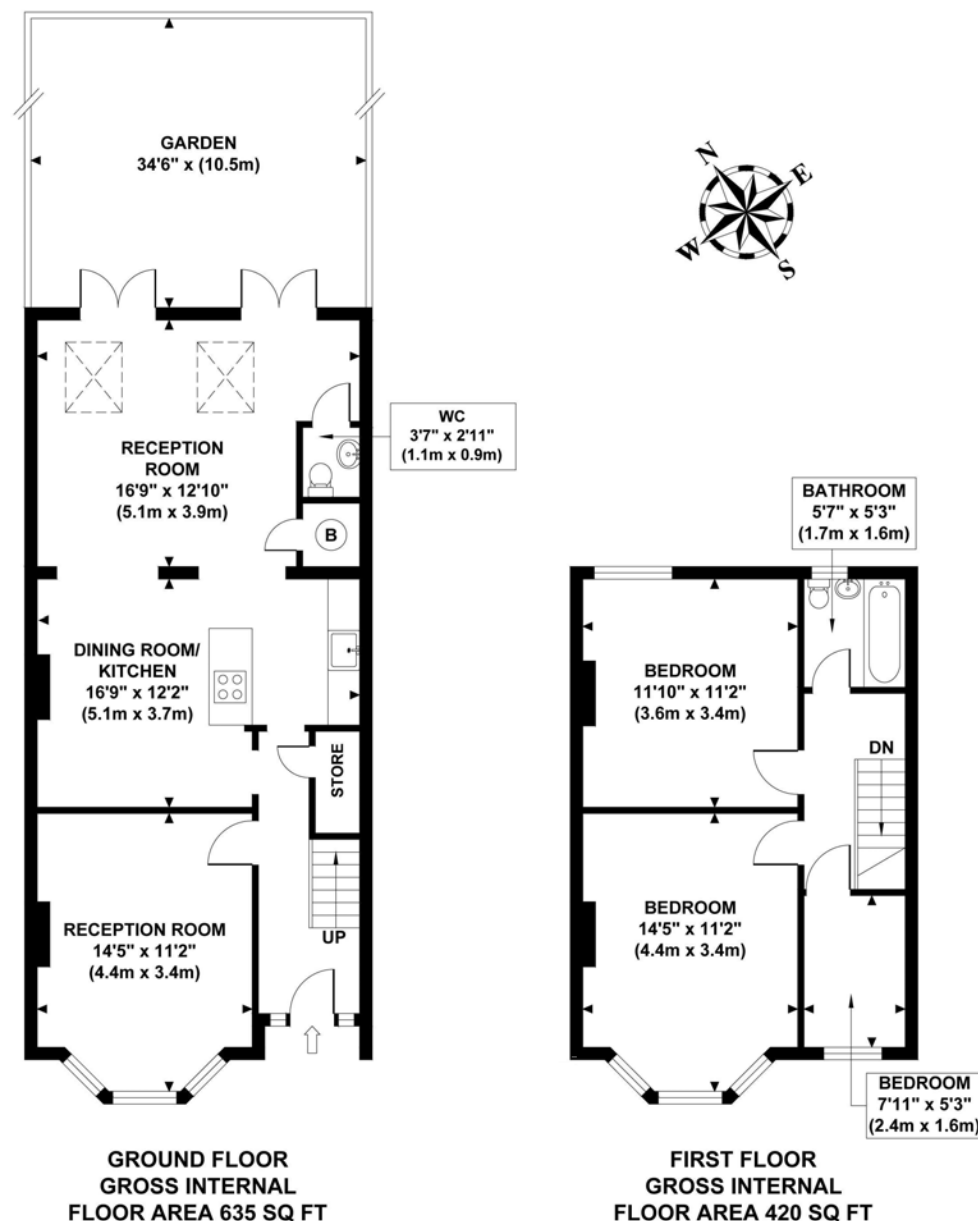
EPC RATING: D

LOCAL AUTHORITY: Ealing

COUNCIL TAX BAND: E

You may wish to instruct us about a related service, including: the sale and letting of residential and commercial property, the provision of mortgage and financial services, conveyancing and property management. Where you choose to use other services, Northfields or its employees may receive a fee or commission which will be disclosed to you.

DEANS ROAD
Approximate Gross Internal Area
1056 sq ft / 98.10 sq m



Although every attempt has been made to ensure accuracy, all measurements are approximate and no responsibility is taken for any error, omission, or mid-statement. This floor plan is for illustrative purposes only and not to scale. Measured in accordance to RICS standards.
GB PRO PHOTOS

Your local independent
award winning estate agents



Northfields

130-132 Northfield Avenue,
Ealing W13 9RT
Sales: 020 8840 6666
E: nasales@northfields.co.uk

020 8840 6666

www.northfields.co.uk

CONTACT

Us today

TO FIND OUT

MORE