



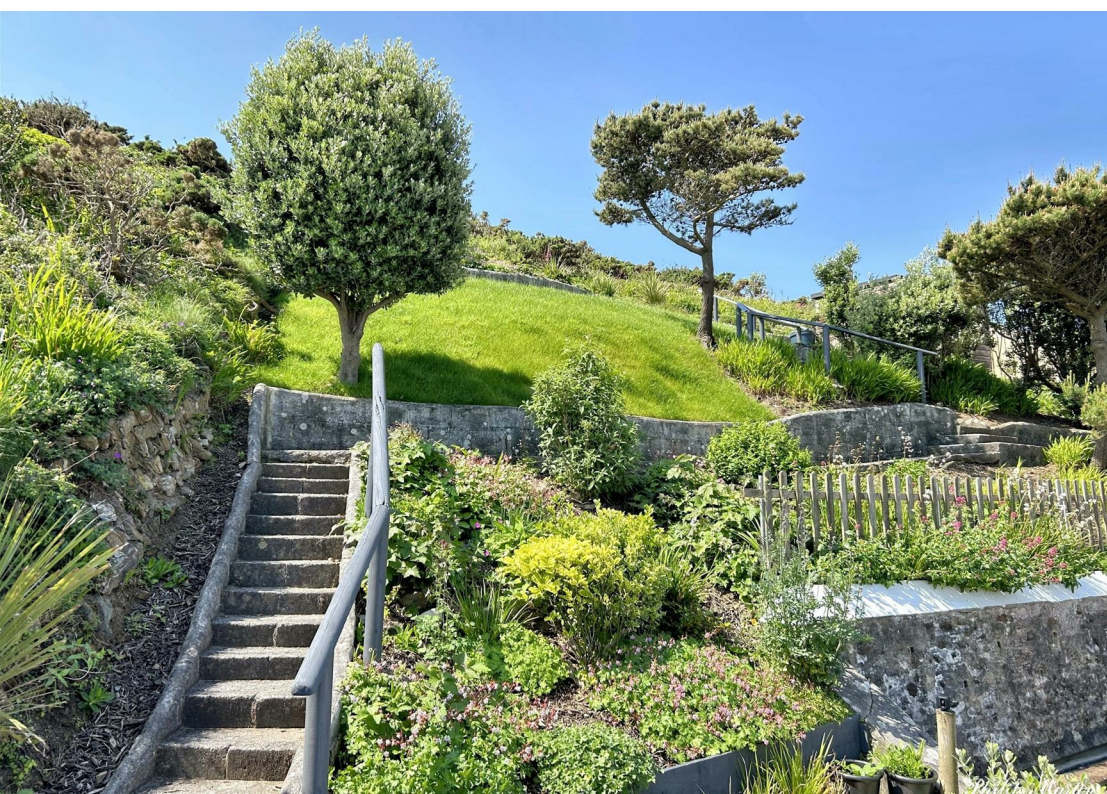
SURF VIEW
WEST CLIFF
PORTHTOWAN
TR4 8AE

Philip Martin

ESTATE AGENTS, CHARTERED SURVEYORS, VALUERS & AUCTIONEERS



Philip Martin



Philip Martin

SURF VIEW WEST CLIFF PORTHTOWAN TR4 8AE

DETACHED HOME IN STUNNING COASTAL POSITION

A truly unique opportunity to purchase a home in one of the most scenic positions along this stretch of spectacular coastline and uninterrupted views over the blue flag beach and ocean beyond.

Perched above the golden sandy surfing beach the views over the waves are utterly breathtaking.

There is parking for two cars and amazing terraced gardens with a sun deck to soak in the views.

Four-bedroom accommodation which has been refurbished in recent years with recently replaced windows and beautifully presented throughout.

Freehold

GUIDE PRICE £850,000

Philip Martin

PHILIP MARTIN

9 Cathedral Lane, Truro, Cornwall, TR1 2QS

Truro: 01872 242244 **St Mawes:** 01326 270008

E: sales@philip-martin.co.uk

www.philip-martin.co.uk



The particulars are issued on the understanding that all negotiations are conducted through Philip Martin who for themselves or for the Vendor whose agents they are, give notice that:

(a) Whilst every care has been taken in preparation of these particulars, their accuracy is not guaranteed, and they do not constitute any part of an offer or contract. Any intended purchaser must satisfy himself by inspection or otherwise as to the correctness of each of the statements contained in these particulars.

(b) They do not accept liability for any inaccuracy in these particulars nor for any travelling expenses incurred by the applicants in viewing properties that may have been let, sold or withdrawn.

Sales - Referral fee disclosure - We may recommend conveyancing services to you through Muve. These services are optional, however, should you use their services, Philip Martin will receive a payment which is typically £200 plus vat.

GENERAL COMMENTS

As the name suggests, Surf View is perched above the golden sandy surfing beach of Porthtowan on the North Cornish Coast and boasts spectacular views over the waves, the view is utterly breath-taking. Perfectly positioned on West Cliff, Surf View occupies arguably one of the most sought after positions within the village and indeed along this stretch of coastline. In recent years, this four-bedroom property has undergone an extensive program of refurbished and it is now beautifully presented throughout. The gardens rise and extend behind the property with the sun deck to one side.

This property will appeal to a range of potential buyers either looking for a holiday home or holiday let or as with many coastal locations, redevelopment could also be an option with projections already taking place within the village. It is a well known surfing beach however a relatively undiscovered gem and huge potential for the future.

THE PROPERTY

The accommodation is versatile with most principal rooms enjoying a view over the beach. The recently replaced windows provide plenty natural light and a feeling of space throughout. The open plan living room is a real feature with the kitchen, dining and sitting room situated in the middle of the house with bi-folding doors opening to the front. The master bedroom with en-suite and sun room to one side and the remaining three bedrooms and shower room to the other. The rear covered courtyard is a very useful part of the property. ideal for storing surf boards. This in turn opens to the utility room. A flight of steps lead up to the sun deck and then up and through the terraced gardens, all of which enjoy far reaching views.

PORTHTOWAN

Set in narrow winding valley flanked by impressive granite cliffs is the seaside village of Porthtowan which has a great beach and a wealth of heritage. Its name comes from the Cornish words "porth" and "tewynn" to mean landing place at the sand dunes. Porthtowan is a relatively un-commercialized village renowned for its superb surfing and beautiful Blue Flag beach. Designated Area of Outstanding Natural Beauty (AONB), along the coast are Gullyn Rock, Diamond Rock and sandstone and slate cliffs. Porthtowan itself has a small selection of shops for day to day needs and there is also the well known Blue Bar on the edge of the beach.

A little over a century ago the scene was very different. Mining flourished with the most notable mine, the Wheal Towan copper mine, generating incredible wealth and owned by Ralph Allen Daniell of Treliissick. Located just to the north of Porthtowan at Chapel Porth is the Towan Roath engine house, the archetypal Cornish mine dramatically positioned on the cliffs overlooking the beach.

MUNDIC BLOCK

A Concrete Screening Test was undertaken in 2018. One out of the five samples taken and assessed produced an overall "Classification C" identifying one type of unsatisfactory concrete. Therefore the property may not be considered suitable for standard mortgage purposes.



In greater detail the accommodation comprises (all measurements are approximate):

ENTRANCE PORCH

Electric radiator, space for cloaks,

KITCHEN

2.95 x 2.90 (9'8" x 9'6")

A modern fitted kitchen with a range of units with stone worktop, Blanco one and a half sink and drainer inset. Dishwasher, under counter fridge, hob with extractor, oven and microwave. Window and door opening to the rear. Door to master bedroom.

LOUNGE/DINING ROOM

6.93 x 2.92 (22'8" x 9'6")

Bi-folding door to front enjoying the view and window to the rear. Double doors opening to inner hall. Electric radiator.

MASTER BEDROOM

4.43 x 3.55 (14'6" x 11'7")

With a wood burning stove and radiator. Sliding patio doors opening to the conservatory.

CONSERVATORY

Overlooking the front aspect.

Philip Martin



EN-SUITE

A white suite with tiled floor and underfloor heating, heated towel rail, obscured window to side. Low level w.c., vanity wash hand basin and extractor fan.

INNER HALL

Former fireplace, electric radiator, store cupboard and loft hatch.

BEDROOM

3.8 x 2.93 (12'5" x 9'7")

Window to front and radiator.

BEDROOM

3.65 x 2.73 (11'11" x 8'11")

Window to front and radiator.

BEDROOM/STUDY

2.32 x 2.18 (7'7" x 7'1")

Obscured window to side and radiator.

SHOWER ROOM

2.40 x 1.66 (7'10" x 5'5")

A white suite with w.c., wash hand basin, shower, heated towel rail, extractor fan, cupboard and obscured window to rear.

REAR COVERED COURTYARD / STORE

A small cactus garden and a perfect place for storing surf boards and other beach or outdoor equipment.

UTILITY

4.81 x 2.22 (15'9" x 7'3")

Space for washing machine and tumble dryer. Sink and drainer and space for fridge freezer.

OUTSIDE

There is driveway parking to the front with steps and a path leading to the front of the property.

To the rear the sun deck makes the most of the view with terraced gardens behind incorporating a shed with electric connected. A great spot for a summerhouse or hot tub taking full advantage of panoramic views.

N.B

The electrical circuit, appliances and heating system have not been tested by the agents.

VIEWING

Strictly by Appointment through the Agents Philip Martin, 9 Cathedral Lane, Truro, TR1 2QS. Telephone: 01872 242244 or 3 Quayside Arcade, St. Mawes, Truro TR2 5DT. Telephone 01326 270008.

SERVICES

Mains electric, water and drainage.

COUNCIL TAX

Band C.

DATA PROTECTION

We treat all data confidentially and with the utmost care and respect. If you do not wish your personal details to be used by us for any specific purpose, then you can unsubscribe or change your communication preferences and contact methods at any time by informing us either by email or in writing at our offices in Truro or St Mawes.

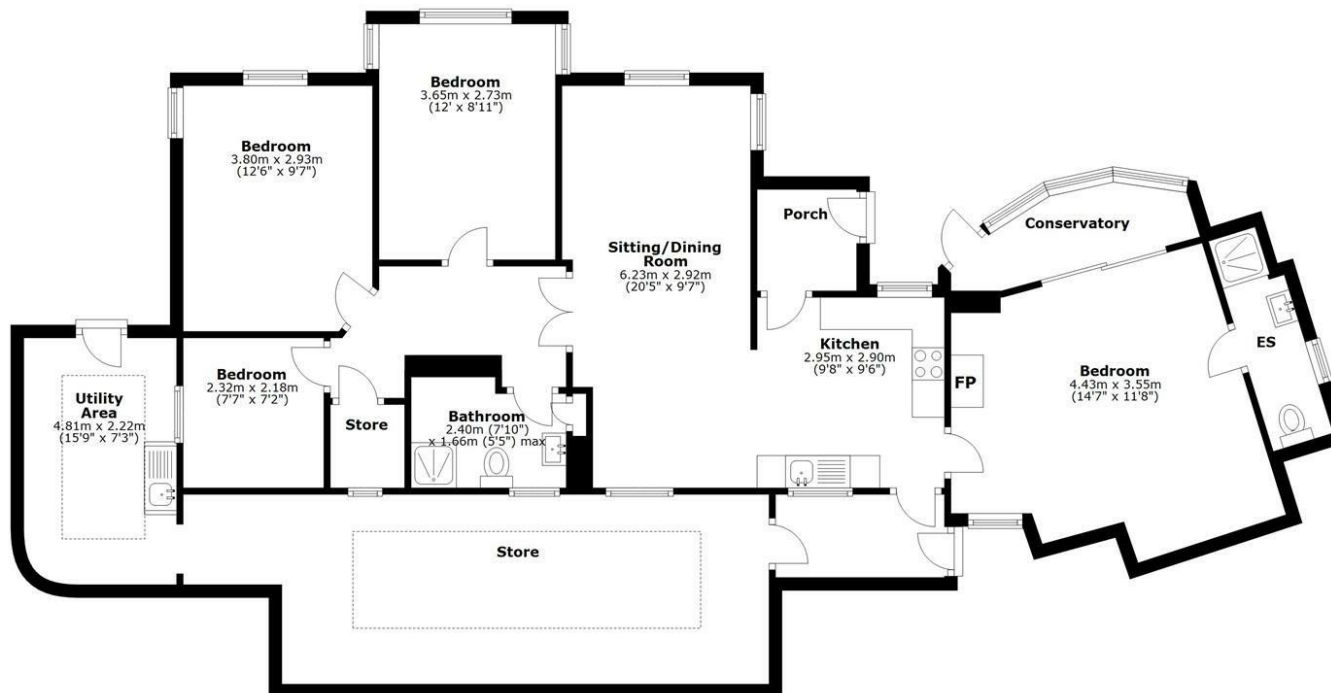
DIRECTIONS

Proceeding into Porthtowan from either Truro or Redruth head towards the beach along Beach Road and just before the pub take the left hand turning into West Beach Road. At the mini roundabout turn left into West Cliff. Proceed up the hill and the driveway to the property is on the left hand side.



Philip Martin

Ground Floor
Approx. 136.0 sq. metres (1464.2 sq. feet)



Total area: approx. 136.0 sq. metres (1464.2 sq. feet)

Whilst every attempt has been made to ensure the accuracy of the floorplan contained here, measurements of doors, windows, rooms and any other items are approximate and no responsibility is taken for any error, omission or mis-statement. This plan is for illustration purposes only and should be used as such.
Plan produced using PlanUp.

Surf View, Porthtowan

| Energy Efficiency Rating | | Current | Potential |
|---|-----------------|-------------------------|-----------|
| Very energy efficient - lower running costs | 92-100 A | | |
| 89-91 B | | | |
| 85-88 C | | | |
| 81-84 D | | | |
| 77-79 E | | | |
| 73-76 F | | | |
| 69-72 G | | | |
| Not energy efficient - higher running costs | | | |
| England & Wales | | EU Directive 2002/91/EC | |

| Environmental Impact (CO ₂) Rating | | Current | Potential |
|---|-----------------|-------------------------|-----------|
| Very environmentally friendly - lower CO ₂ emissions | 92-100 A | | |
| 89-91 B | | | |
| 85-88 C | | | |
| 81-84 D | | | |
| 77-79 E | | | |
| 73-76 F | | | |
| 69-72 G | | | |
| Not environmentally friendly - higher CO ₂ emissions | | | |
| England & Wales | | EU Directive 2002/91/EC | |

Philip Martin



Philips Martin



Philips Martin



Philips Martin



PHILIP MARTIN

Truro 01872 242244 St Mawes 01326 270008 www.philip-martin.co.uk

Philip Martin

ESTATE AGENTS, CHARTERED SURVEYORS, VALUERS & AUCTIONEERS