



23 TREYEW ROAD

TRURO,
TR1 2BY

Philip Martin

ESTATE AGENTS, CHARTERED SURVEYORS, VALUERS & AUCTIONEERS

Philip Martin



23 TREYEW ROAD

TRURO
TR1 2BY

SUBSTANTIAL SEMI DETACHED TOWNHOUSE FOR
RENOVATION

Situated in a superb location within a fabulous plot with a rear garden measuring approx 170 feet in length. Offered for sale for the first time in over 50 years having been a wonderful and cherished family home but now in need of renovation and refurbishment. 6 bedrooms, 2 reception rooms, parking for several cars and garaging. A special opportunity.

GUIDE PRICE £499,950

Philip Martin

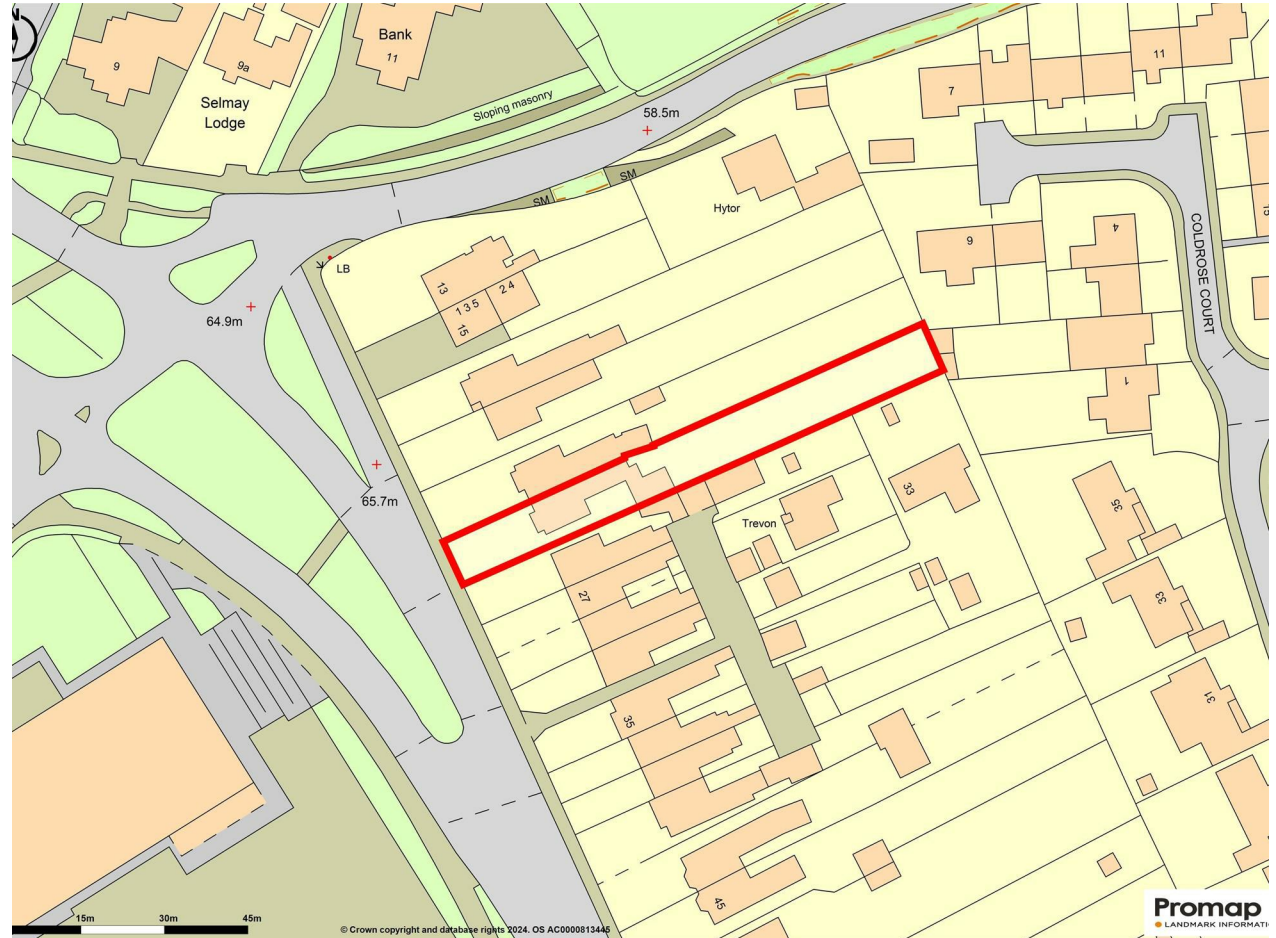
PHILIP MARTIN

9 Cathedral Lane, Truro, Cornwall, TR1 2QS

Truro: 01872 242244 **St Mawes:** 01326 270008

E: sales@philip-martin.co.uk

www.philip-martin.co.uk



The particulars are issued on the understanding that all negotiations are conducted through Philip Martin who for themselves or for the Vendor whose agents they are, give notice that:

(a) Whilst every care has been taken in preparation of these particulars, their accuracy is not guaranteed, and they do not constitute any part of an offer or contract. Any intended purchaser must satisfy himself by inspection or otherwise as to the correctness of each of the statements contained in these particulars.

(b) They do not accept liability for any inaccuracy in these particulars nor for any travelling expenses incurred by the applicants in viewing properties that may have been let, sold or withdrawn.

Sales - Referral fee disclosure - We may recommend conveyancing services to you through Muve. These services are optional, however, should you use their services, Philip Martin will receive a payment which is typically £200 plus vat.

GENERAL COMMENTS

23 Treyew Road is a large semi detached town house which is situated in a superb location within a fabulous plot with a rear garden measuring approx 170 feet in length.

The property is offered for sale for the first time in over 50 years having been a wonderful and cherished family home. It is however fair to say that the property is now in need of general renovation and refurbishment however it offers tremendous potential.

In all the commodious accommodation is arranged over three floors and incorporates 6 bedrooms, 2 reception rooms, kitchen/dining room, bathroom and two w.c's.

The property boasts driveway parking for several cars as well as a garage.

TRURO

Truro is renowned for its excellent shopping centre, fine selection of restaurants, bars, private and state schools and main line railway link to London (Paddington). The Hall for Cornwall is also a popular venue providing all year round entertainment and other cultural facilities include the Royal Cornwall Museum and the historic Cathedral.

In greater detail the accommodation comprises (all measurements are approximate):

ENTRANCE VESTIBULE



HALL

LOUNGE

4.62 x 4.44 (15'1" x 14'6")

RECEPTION

4.31 x 3.92 (14'1" x 12'10")

CLOAKROOM

BREAKFAST ROOM

3.93 x 2.87 (12'10" x 9'4")

KITCHEN

3.25 x 3.23 (10'7" x 10'7")



REAR HALL

FIRST FLOOR

BEDROOM 1

4.62 x 3.46 (15'1" x 11'4")

BEDROOM 2

4.32 x 3.91 (14'2" x 12'9")

BEDROOM 3

4.93 x 3.20 (16'2" x 10'5")

BEDROOM 6

3.63 x 2.15 (11'10" x 7'0")

BATHROOM

2.52 x 2.24 (8'3" x 7'4")

W.C.

SECOND FLOOR

BEDROOM 4

5 x 4 (16'4" x 13'1")

BEDROOM 5

4.96 x 2.70 (16'3" x 8'10")

OUTSIDE

GARAGE

6.4 x 3.9 (20'11" x 12'9")

SERVICES

Mains gas, water, electricity and drainage.

COUNCIL TAX

Band E.

TENURE

Freehold.

N.B

The electrical circuit, appliances and heating system have not been tested by the agents.

VIEWING

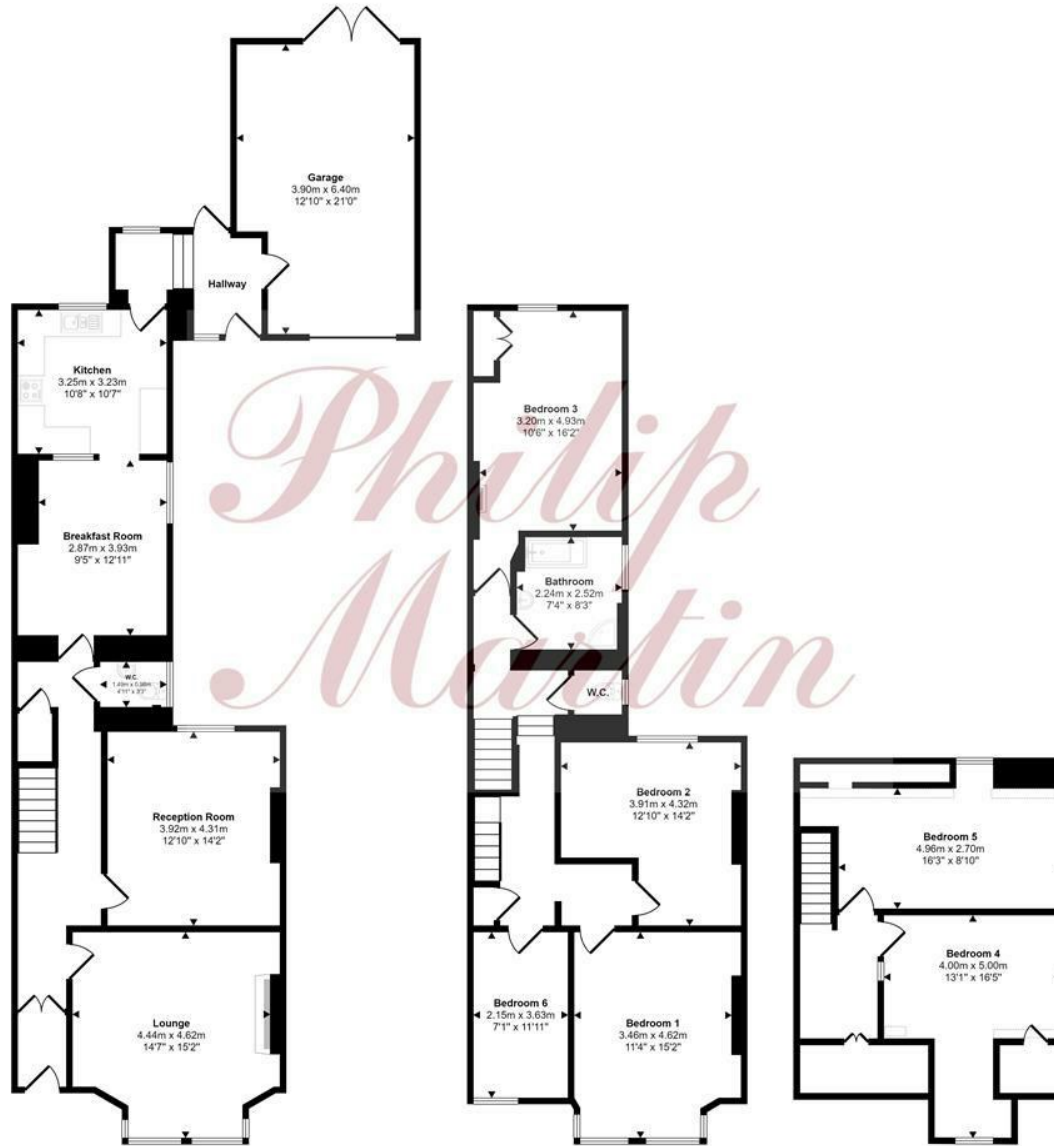
Strictly by Appointment through the Agents Philip Martin, 9 Cathedral Lane, Truro, TR1 2QS. Telephone: 01872 242244 or 3 Quayside Arcade, St. Mawes, Truro TR2 5DT. Telephone 01326 270008.

DATA PROTECTION

We treat all data confidentially and with the utmost care and respect. If you do not wish your personal details to be used by us for any specific purpose, then you can unsubscribe or change your communication preferences and contact methods at any time by informing us either by email or in writing at our offices in Truro or St Mawes.

Philip Martin

Approx Gross Internal Area
237 sq m / 2551 sq ft



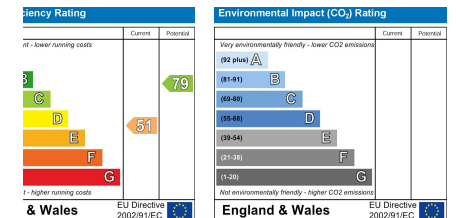
Ground Floor
Approx 109 sq m / 1176 sq ft

First Floor
Approx 83 sq m / 894 sq ft

Second Floor
Approx 45 sq m / 482 sq ft

Denotes head height below 1.5m

This floorplan is only for illustrative purposes and is not to scale. Measurements of rooms, doors, windows, and any items are approximate and no responsibility is taken for any error, omission or mis-statement. Icons of items such as bathroom suites are representations only and may not look like the real items. Made with Made Snappy 360.







PHILIP MARTIN

Truro 01872 242244 St Mawes 01326 270008 www.philip-martin.co.uk

Philip Martin

ESTATE AGENTS, CHARTERED SURVEYORS, VALUERS & AUCTIONEERS

Philip Martin