



18 Kings Chapel  
Bridgwater, Somerset, TA6 3NP

**Brightest**move

# Brightest move

£130,000



Brightestmove are delighted to offer for sale this substantial ground floor apartment situated within a short walk of Bridgwater town centre and all the amenities it has to offer.

This two bedroom apartment, converted recently from a Wesleyan chapel, retains many period features including high ceilings and also benefits from its own private entrance.

The centrally heated accommodation briefly comprises entrance hall, open plan living room/dining room/kitchen, two bedrooms with en-suite and walk-in wardrobe to master and further bathroom.

Being sold with the added advantage of no onward chain this property must be viewed to appreciate what is on offer.





Bridgwater is an emerging town situated in the heart of the borough of Sedgemoor and within 11 miles of Taunton and 38 miles of Bristol. The town which is famed for its annual carnival is a thriving place with many new jobs being created in recent years. For more information or an appointment to view please contact the vendors sole agents.

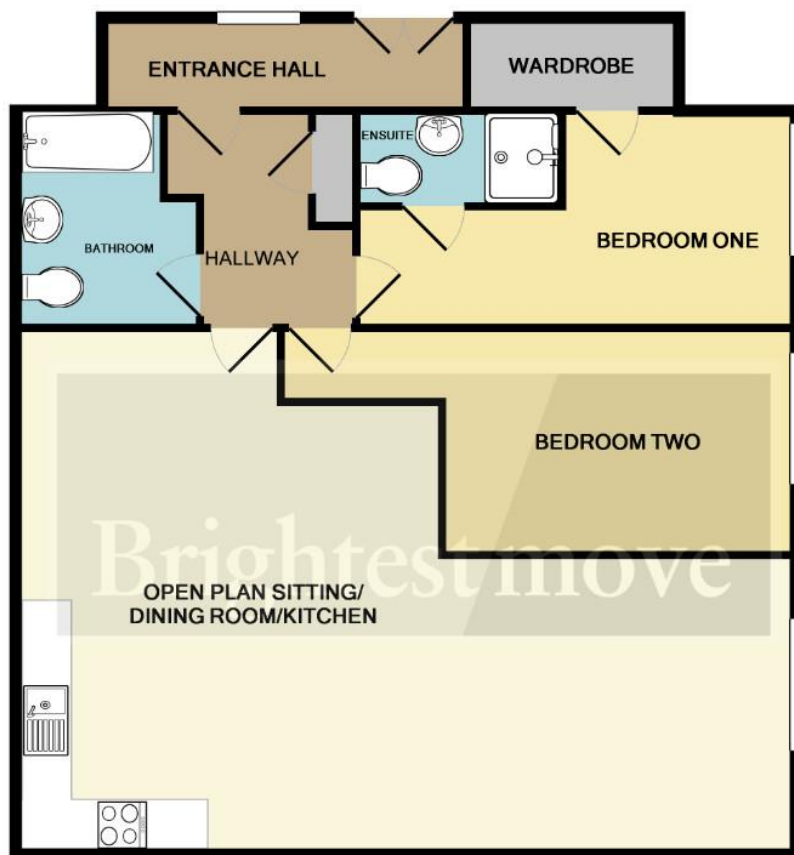
NO ONWARD CHAIN

SERVICES: Mains gas, electricity, water and drainage

HEATING: Gas central heating system

TENURE: Leasehold

COUNCIL TAX BAND: B

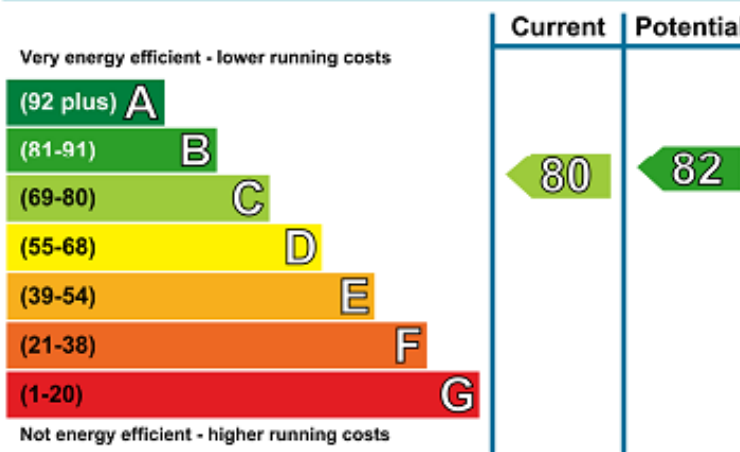


**Sitting/Dining/Kitchen** 32' 05" (max) x 20' 11" (max) (9.88m x 6.38m)

**Bedroom One** 18' 00" (max) x 8' 08" (max) (5.49m x 2.64m)

**Bedroom Two** 21' 03" (max) x 9' 00" (max) (6.48m x 2.74m)

### Energy Efficiency Rating



No statement in these details is to be relied upon as representation of fact, and purchasers should satisfy themselves by inspection or otherwise as to the accuracy of the statements contained within. These details do not constitute any part of any offer or contract. CMH Southwest limited trading as Brightest Move and their employees and agents do not have any authority to give warranty or representation whatsoever in respect of this property. These details and all statements herein are provided without any responsibility on the part of CMH Southwest limited trading as Brightest Move or the vendors. CMH Southwest limited trading as Brightest Move has not tested the equipment or central heating system mentioned in these particulars and the purchasers are advised to satisfy themselves as to the working order and condition. Measurements: Great care is taken when measuring, but measurements should not be relied upon for ordering carpets, equipment, etc. This property sheet forms part of our database, and is protected by the database right and copyright laws. No unauthorised copying or distribution without permission.

28 High Street, Bridgwater, Somerset TA6 3BJ

Tel: 01278 420444

bridgwater@brightestmove.co.uk

www.brightestmove.co.uk

**Brightest move**