



FOR SALE

Glenshee Close, Northwood
£375,000 Leasehold

IDEAL FIRST TIME PURCHASE OR INVESTMENT- A beautifully presented modern and spacious two bedroom second floor

- Flat
- 2 Beds
- 1 Reception
- 1 Bathroom
- Balcony

- Energy Rating : C
- Council Tax Band D
- Shower
- Parking

?

Garden



£375,000
Leasehold

Glenshee Close,
Northwood,
Middlesex
HA6 2UH

>> Key Features

- Flat
- 2 Beds
- 1 Reception
- 1 Bathroom
- Energy Rating : C
- Council Tax Band D
- Shower
- Parking
- Balcony
- Garden

IDEAL FIRST TIME PURCHASE OR INVESTMENT- A beautifully presented modern and spacious two bedroom second floor apartment, which is offered in good condition throughout. Also with communal gardens .

Access to the communal hallway is via a secure telephone entry system and the apartment itself features;

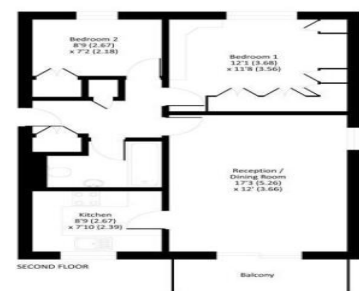
Entrance hallway, two bedrooms with built in storage, good sized living room with doors onto balcony, family bathroom and fitted modern kitchen. Parking to rear with additional spaces.

The property is ideally located for the centre of Northwood and the Metropolitan Line Station.





Glenshee Close, Northwood, HA6 2UH
Total gross internal area = 638 sq ft / 58.9 sq m



Whilst every effort has been made to ensure the accuracy of the floor plan contained herein, measurements of doors, windows and rooms are approximate and no responsibility is taken for any errors, omissions or misstatements. These plans are for information purposes only and should not be used as a basis for any financial transaction. The floor plan is given in the total square footage of the property if quoted on this plan. Any figure given is for initial guidance only and should not be relied on as a basis of valuation.

Direction
S...

??

??