



Price

£740,000

Freehold

4x  2x  2x 

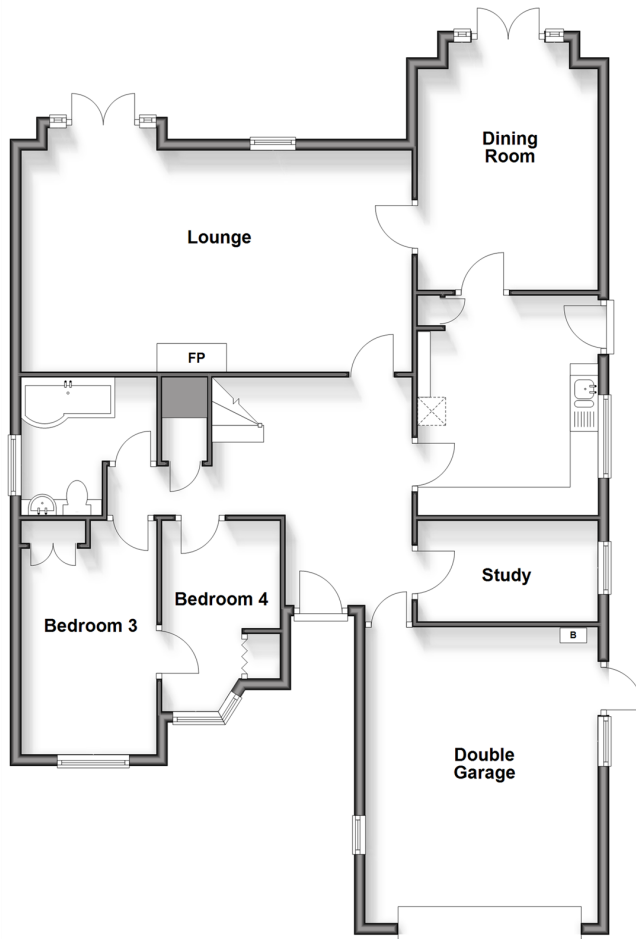
**Park Crescent,
Emsworth, Hampshire,
PO10**

OVER 60?

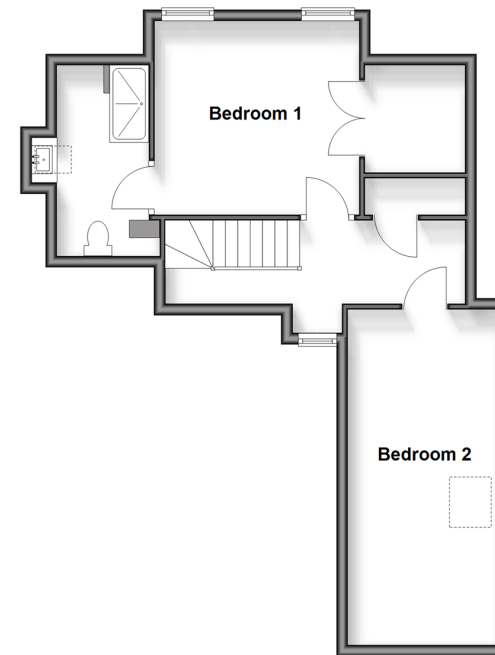
Secure this property
for up to **59% less!**

cubitt & west
Helping you move forwards

Ground Floor
Approx. 124.5 sq. metres (1340.0 sq. feet)



First Floor
Approx. 49.9 sq. metres (537.6 sq. feet)



Accommodation

GROUND FLOOR

Entrance Hall
Lounge: 23'0 x 12'11 (7.02m x 3.94m)
Dining Room : 14'2 x 10'6 (4.32m x 3.20m)
Kitchen: 12'11 x 10'5 (3.94m x 3.18m)
Study : 10'1 x 5'11 (3.08m x 1.80m)
Bedroom 4: 11'7 x 6'11 (3.53m x 2.11m)
Bedroom 3: 13'8 x 8'1 (4.17m x 2.47m)
Bathroom

FIRST FLOOR

Landing
Bedroom 1: 11'7 x 10'3 (3.53m x 3.13m)
En-Suite Shower Room
Bedroom 2: 19'5 x 9'1 (5.92m x 2.77m)

OUTSIDE

Front & Rear Gardens
Double Garage : 17'3 x 13'6 (5.26m x 4.12m)
Driveway
Summer House



Main features

- Great size detached home in Emsworth
- Highly desirable location, chain free
- Bright and spacious accommodation with a study
- Large garage and driveway
- Sunny rear garden



Nearest Schools

Primary Schools: Emsworth Primary 0.2 miles, St James C of E Controlled Primary 1.2 miles, Bosmere Junior School 1.7 miles

Secondary Schools: Glenwood School 0.5 miles,

Transport Information

Train Stations: Emsworth 0.7 miles, Havant 1.7 miles, Bedhampton 2.0 miles

Address

Park Crescent, Emsworth, Hampshire, PO10

Directions

For directions to this property please contact us.





cubitt&west
Helping you move forwards

Call Emsworth Branch 01243 377888 ■ cubittandwest.co.uk



■ Legal advice should be taken to verify fixtures/fittings, planning, alterations and/or lease details ■ Appliances & services are untested, dimensions are approximate and floor plans are not to scale
■ Through a Homewise Home For Life Plan people aged 60+ can secure this property for up to 59% less, by purchasing a Lifetime Lease.



44607893/20250218/SR/JH