

OVER 60?

Secure this property
for up to **59% less!**



Price

£650,000

Freehold

3x  1x  1x 

Woodfield Park Road, Emsworth,
Hampshire, PO10

cubitt&west
Helping you move forwards



Main features

- Offered with no forward chain
- Renovated throughout with new electrics and heating system
- Peaceful cul-de-sac location
- Secure and spacious frontage with recently laid driveway leading to the garage
- Close proximity to all the local amenities and transport links

Accommodation

GROUND FLOOR

Entrance Hall

Lounge: 19'5 x 10'11 (5.92m x 3.33m)

Kitchen : 11'5 x 9'5 (3.48m x 2.87m)

Bedroom 1: 12'10 x 11'8 (3.91m x 3.56m)

Bedroom 2: 11'6 x 9'5 (3.51m x 2.87m)

Bedroom 3: 11'1 x 8'0 (3.38m x 2.44m)

Bathroom : 8'7 x 5'8 (2.62m x 1.73m)

Rear Lobby: 5'3 x 3'6 (1.60m x 1.07m)

Cloakroom

OUTSIDE

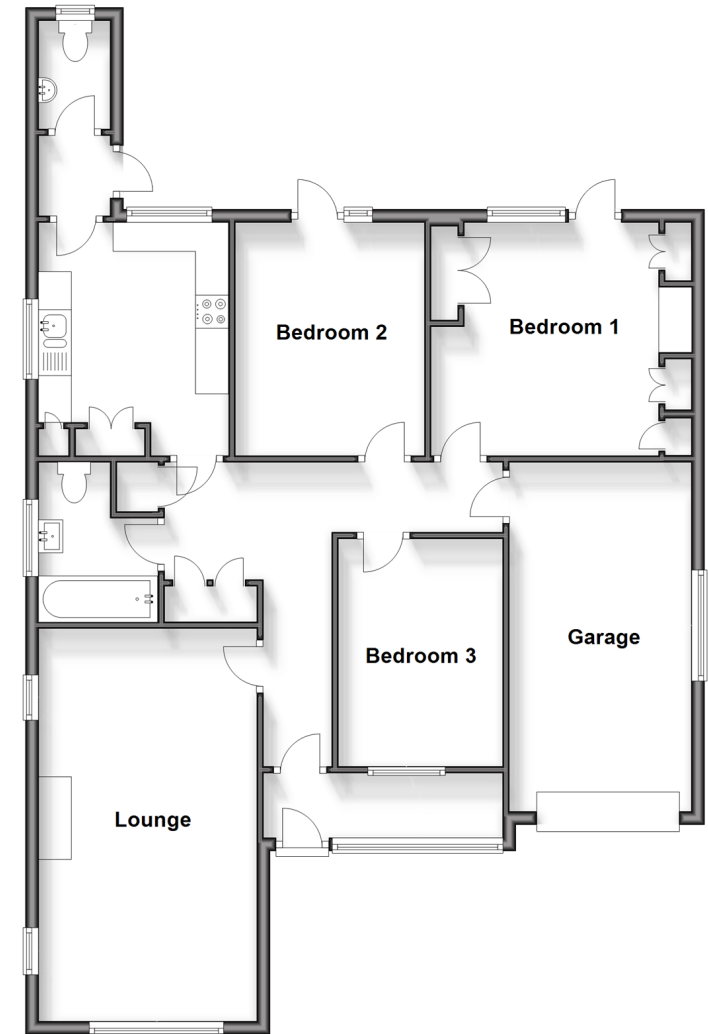
Garage: 17'3 x 8'11 (5.26m x 2.72m)

Driveway

Rear Garden

Ground Floor

Approx. 103.7 sq. metres (1116.4 sq. feet)



Call Emsworth - 01243 377888 ■ cubittandwest.co.uk

- Legal advice should be taken to verify fixtures/fittings, planning, alterations and/or lease details
- Appliances & services are untested, dimensions are approximate and floor plans are not to scale
- Through a Homewise Home For Life Plan people aged 60+ can secure this property for up to 59% less, by purchasing a Lifetime Lease.



44607758/20250214/JH/EG