



Price
£550,000

Freehold

4x  2x  2x 

**North Street, Emsworth,
Hampshire, PO10**

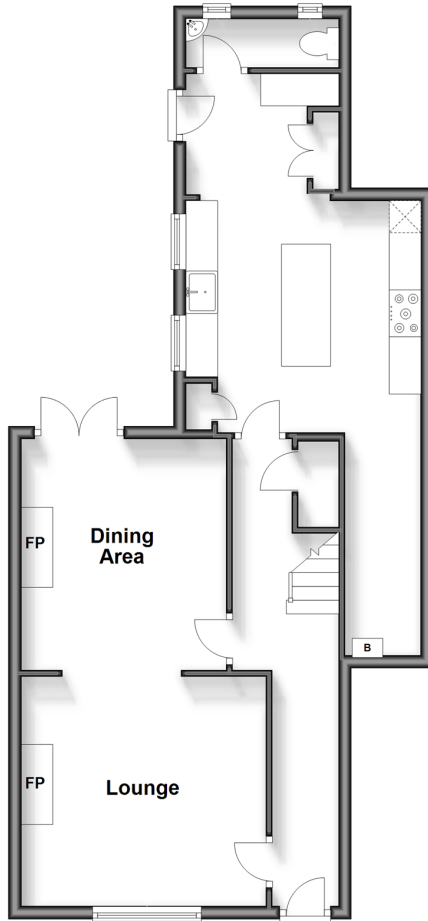
OVER 60?

Secure this property
for up to **59% less!**

cubitt & west
Helping you move forwards

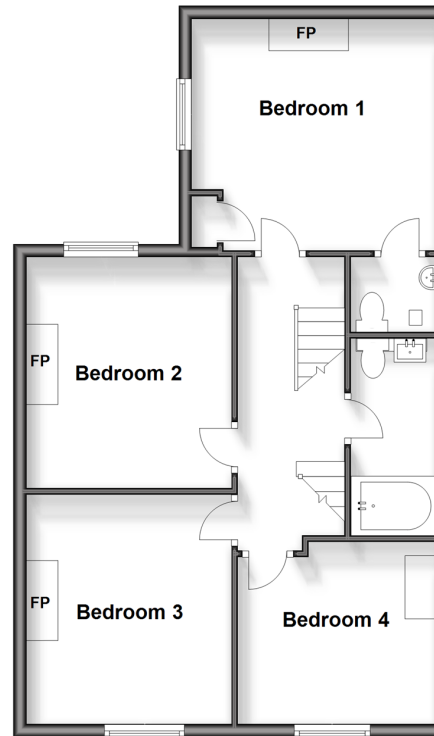
Ground Floor

Approx. 61.5 sq. metres (661.7 sq. feet)



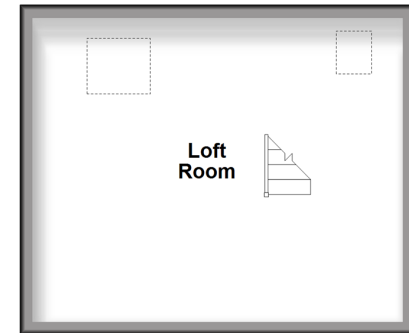
First Floor

Approx. 61.4 sq. metres (661.1 sq. feet)



Second Floor

Approx. 27.6 sq. metres (297.1 sq. feet)



Accommodation

GROUND FLOOR

Entrance Hall
Lounge: 11'9 x 11'7 (3.58m x 3.53m)
Dining Area: 11'9 x 10'6 (3.58m x 3.20m)
Kitchen : 19'5 x 12'2 (5.92m x 3.71m)
Cloakroom

FIRST FLOOR

Landing
Bedroom 1: 12'2 x 12'2 (3.71m x 3.71m)
En-Suite Shower Room
Bedroom 2: 11'9 x 10'6 (3.58m x 3.20m)

Bedroom 3: 11'1 x 10'6 (3.38m x 3.20m)
Bedroom 4: 10'6 x 9'4 (3.20m x 2.85m)
Bathroom

SECOND FLOOR

Loft Room : 19'0 x 15'6 (5.80m x 4.73m)

OUTSIDE

Rear Garden
Off Road Parking



Main features

- No forward chain
- Off road parking for two vehicles
- Refurbished throughout by the current vendors
- Central Emsworth location with all it has to offer including Emsworth train station with ease of access to London
- Character features and charm remain along with the stylish 'Wren kitchen' and impressive bathroom with a deep soaking Japanese bath tub

Nearest Schools

Primary Schools: Emsworth Primary 0.4 miles, St James C of E Controlled Primary 0.5 miles, Westbourne Primary 1.2 miles

Secondary Schools: Glenwood School 0.1 miles, Bourne

Transport Information

Train Stations: Emsworth 0.0 miles, Southbourne 1.3 miles, Warblington 1.3 miles

Address

North Street, Emsworth, Hampshire, PO10

Directions

For directions to this property please contact us.



cubitt&west
Helping you move forwards

Call Emsworth Branch 01243 377888 ■ cubittandwest.co.uk



- Legal advice should be taken to verify fixtures/fittings, planning, alterations and/or lease details
- Appliances & services are untested, dimensions are approximate and floor plans are not to scale
- Through a Homewise Home For Life Plan people aged 60+ can secure this property for up to 59% less, by purchasing a Lifetime Lease.



44607793/20240614/SR/EG